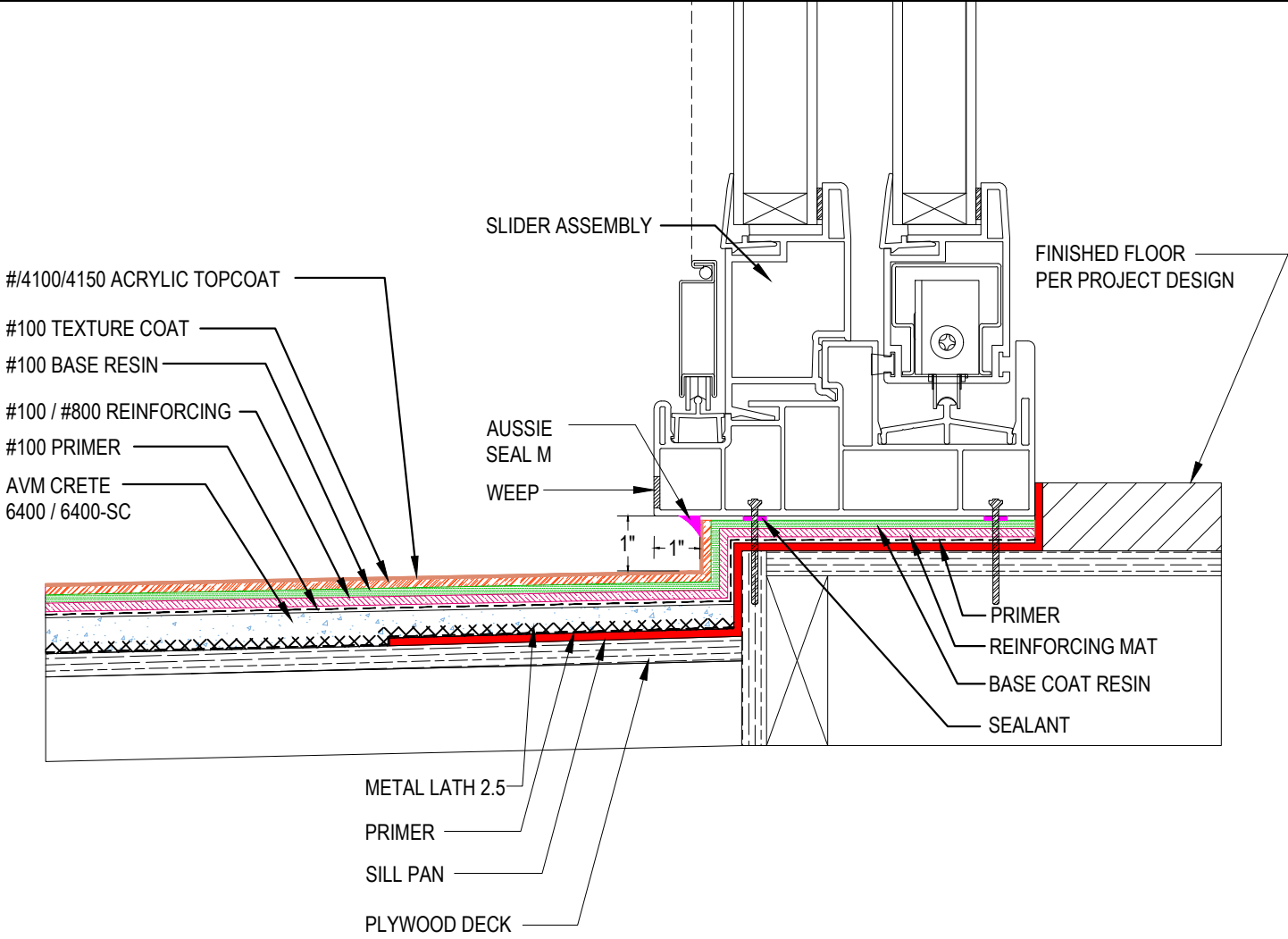


DETAIL #:
0100-EFD-154-P-CS
 AVM System 100
 Elasto Fiberdeck

Typical Sliding Door Assembly
 Over Plywood Substrate - Option 1
 AVM System 100 Elasto Fiberdeck



Notes:

1. To ensure proper drainage, do not block the pre-existing weep holes or other drainage openings of the door assembly
2. Ensure water exiting the weep holes drains away from the door at approximately 1/4" per foot.
3. See application instructions for full system recommendations and requirements.
4. Sealant - Must use AVM approved sealant.