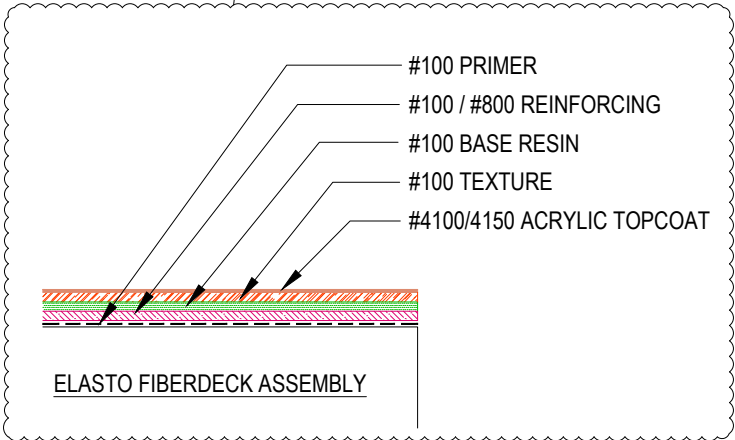
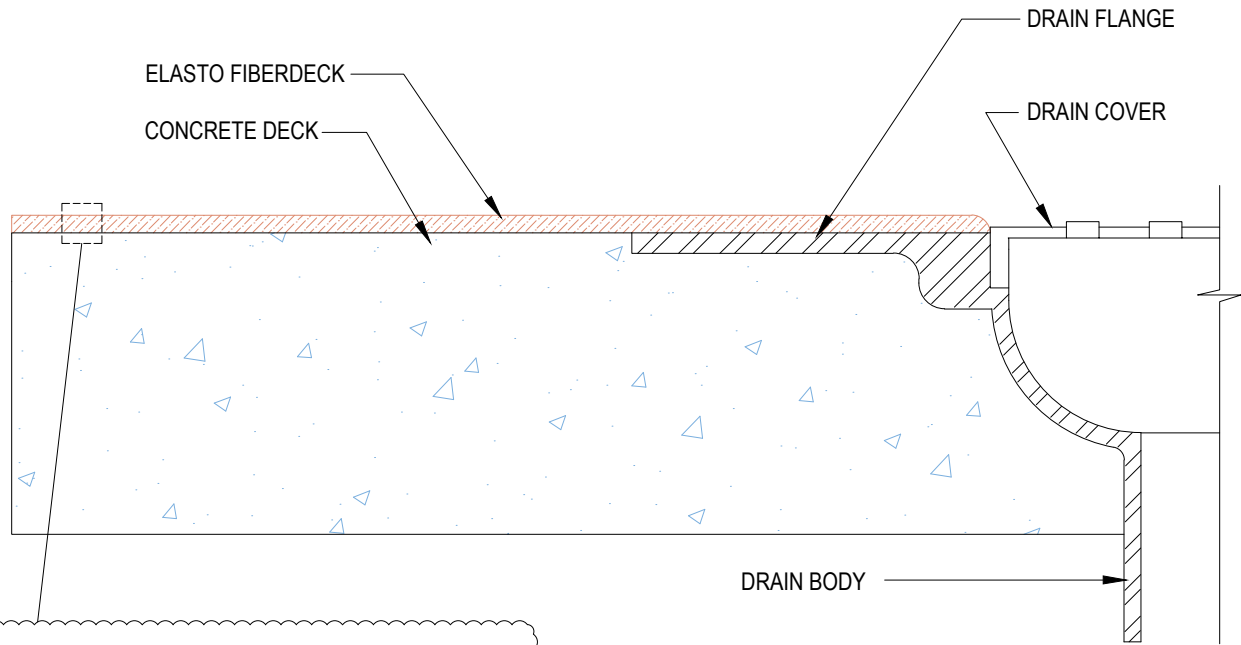


DETAIL #:
0100-EFD-162-P-CS
AVM System 100
Elasto Fiberdeck

Drain Assembly Over Concrete Substrate AVM System 100 Elasto Fiberdeck



Notes:

1. Remove all paints, primer, oils or any foreign matter by abrading /sanding to bare metal prior to full system application.
2. Base resin and reinforcement may be installed into properly repaired drain body.
3. Drains should have a minimum 2" flange.
4. Ensure drain sits low enough for sufficient slope.
5. Do not block weep holes.
4. See application instructions for full system recommendations and requirements.