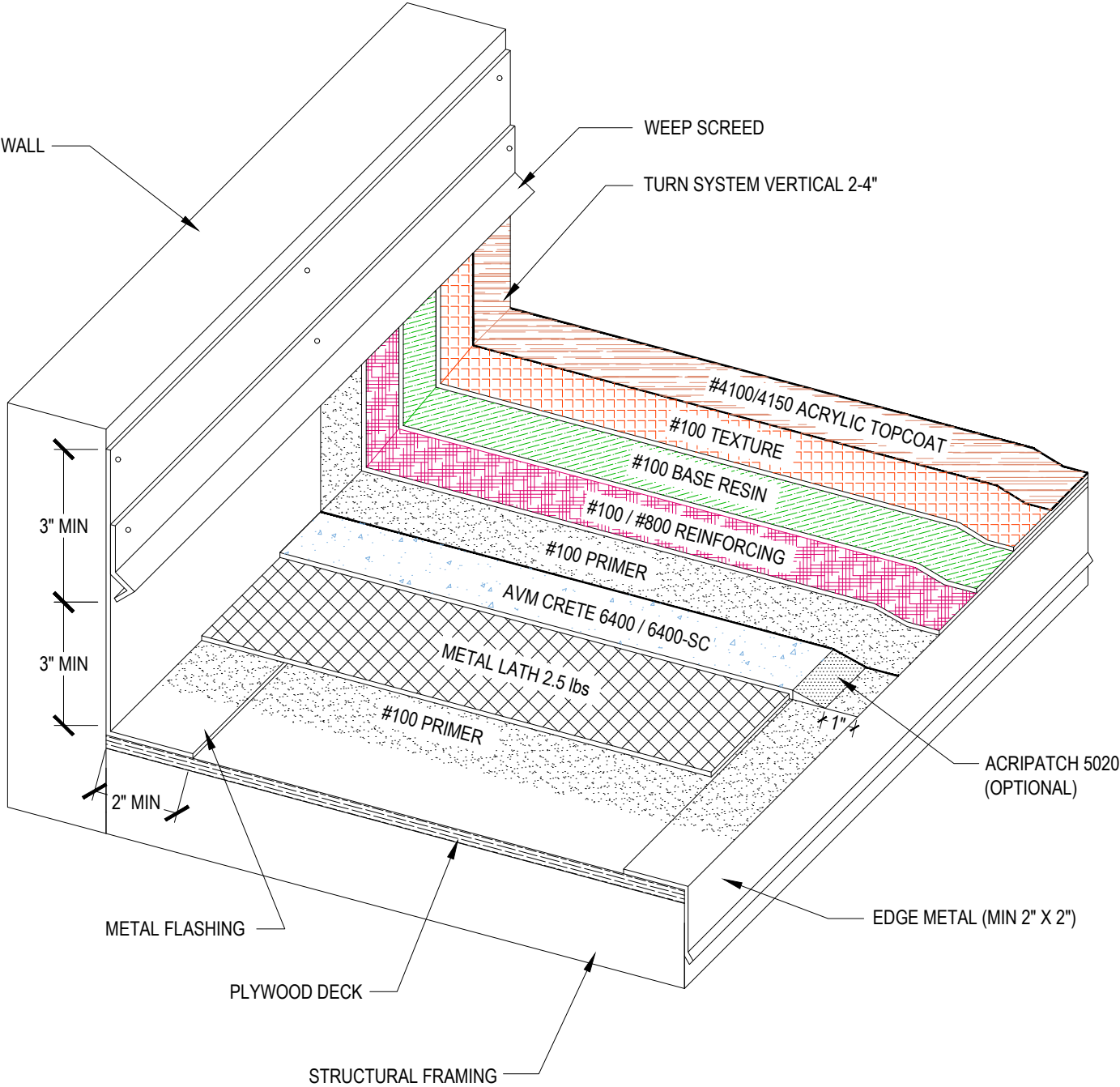


DETAIL #:  
 0100-EFD-501-P-ISO  
 AVM System 100  
 Elasto Fiberdeck

# Assembly Over Plywood Substrate

AVM System 100 Elasto Fiberdeck



**Notes:**

1. Plywood to be minimum 5/8" thick.
2. Metal flashing to be 2" 26 gauge (3-4" onto deck preferred) min 6" on vertical.
3. #100 Texture comes in acrylic or cement base.
4. #100 Fiberglass or #800 Fabric may be used for resin coat.
5. See application instructions for full system recommendations and requirements.