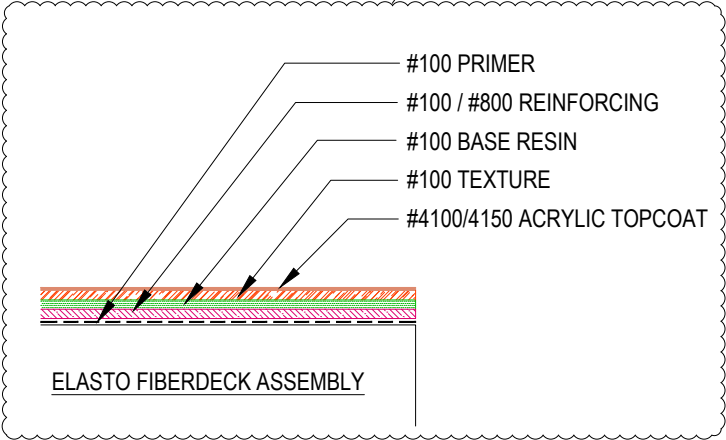
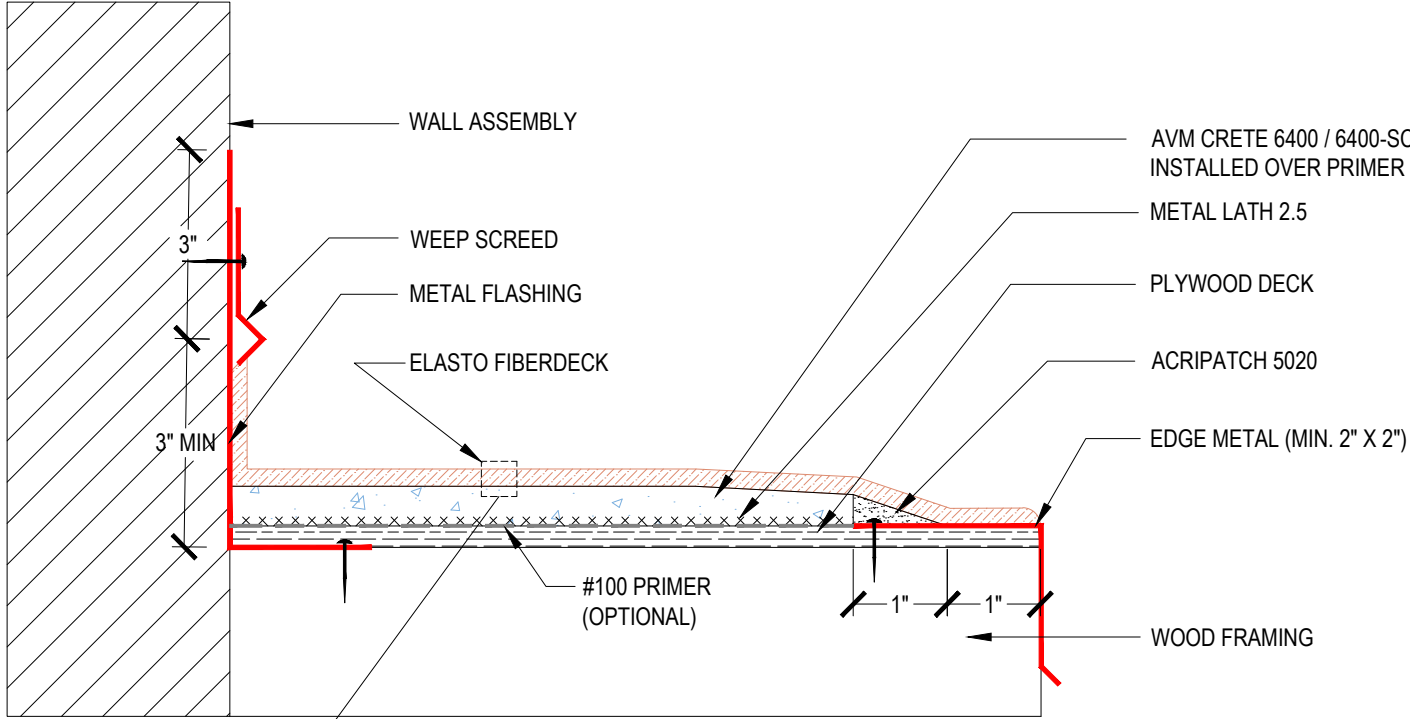


DETAIL #:
0100-EFD-502-P-CS
 AVM System 100
Elasto Fiberdeck

Assembly Over Plywood Substrate

AVM System 100 Elasto Fiberdeck



Notes:

1. Extend membrane, texture, and topcoat to edge of sheet metal flashing
2. Membrane to be bonded to sheet metal edge
3. Terminate Acripatch 1" from edge
4. L Metal to extend above top of screed
5. See application instructions for full system recommendations and requirements