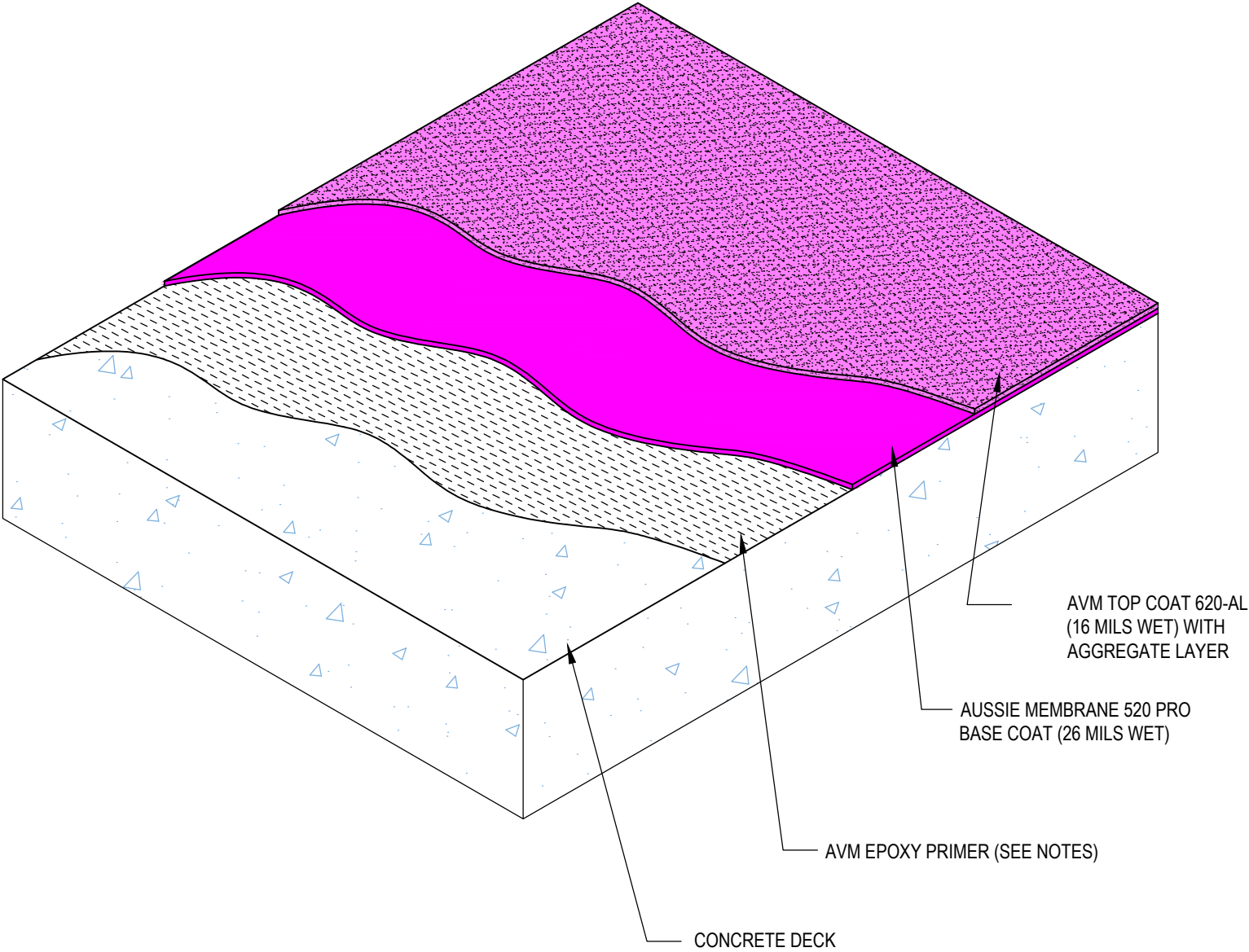


DETAIL #:
0620-1002
AVM System 620

Typical Assembly Over Concrete



AVM SYSTEM 620 - Pedestrian Deck Coating



Notes:

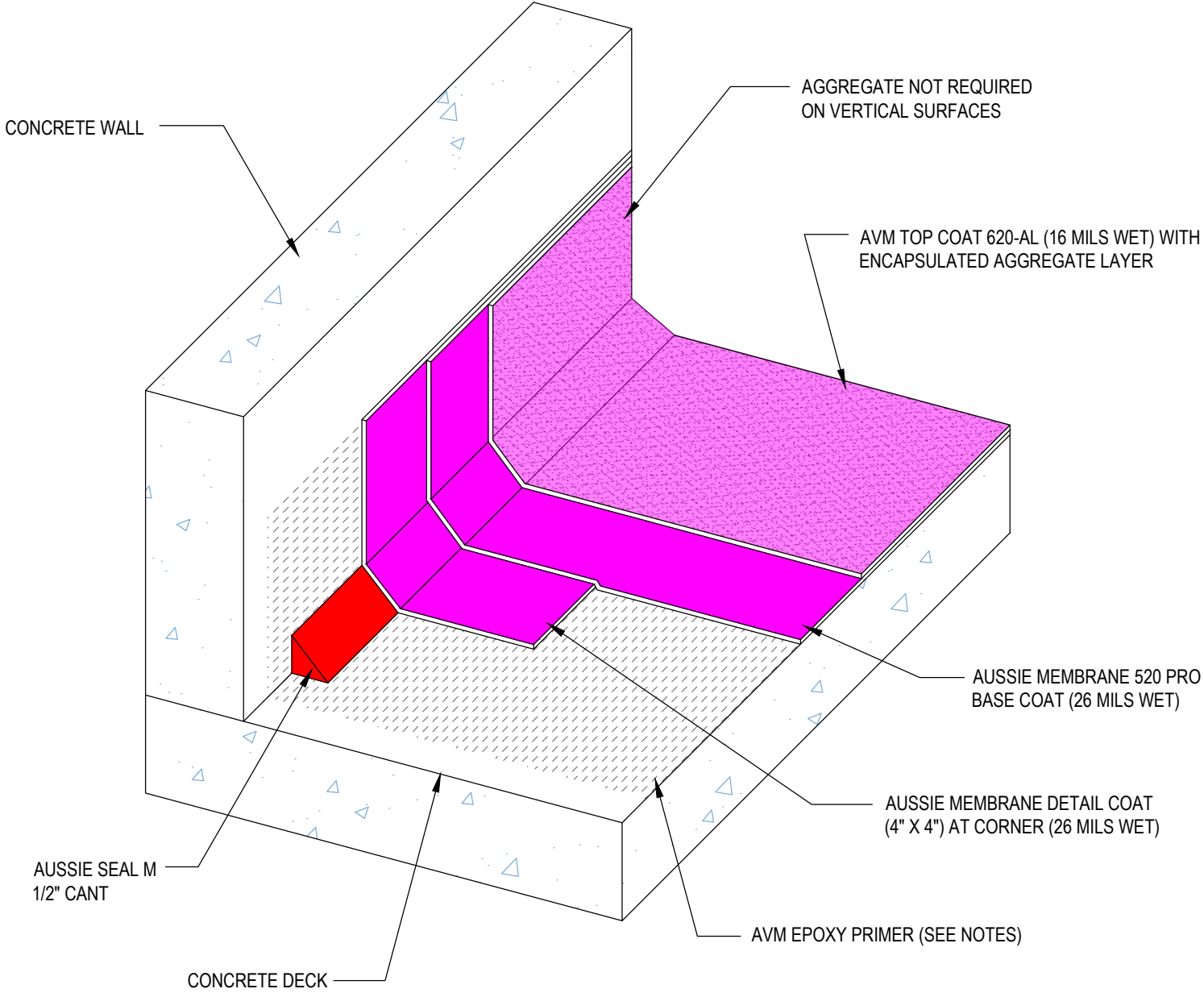
- 1. Epoxy primer may be required to achieve proper adhesion depending on the substrate

DETAIL #:
0620-1100
 AVM System 620

Concrete Wall to Slab Joint



AVM SYSTEM 620 - Pedestrian Deck Coating



Notes:

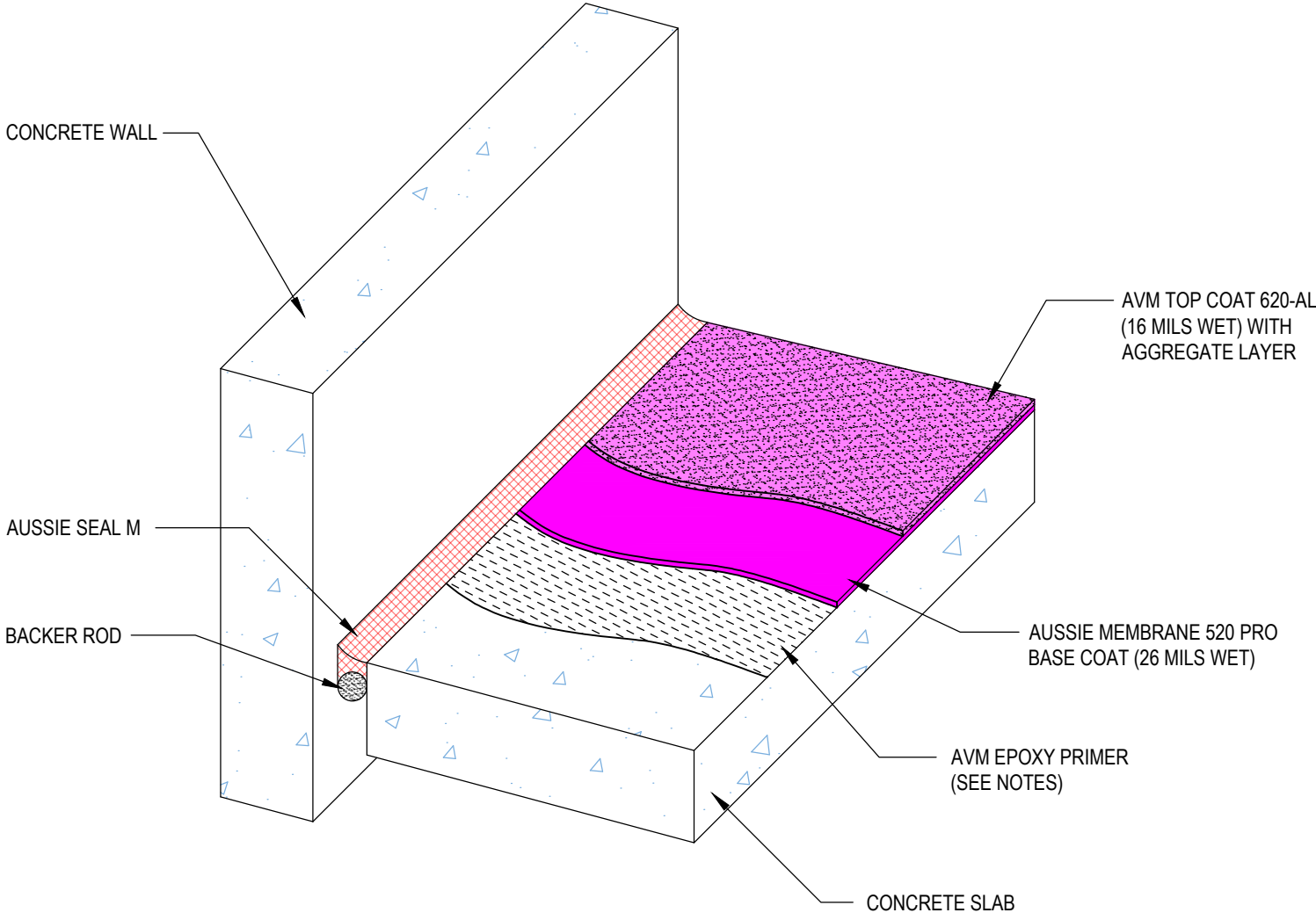
- 1. Epoxy primer may be required to achieve proper adhesion depending on the substrate

DETAIL #:
0620-1005
AVM System 620

Wall to Slab Joint with Backer Rod



AVM SYSTEM 620 - Pedestrian Deck Coating



Notes:

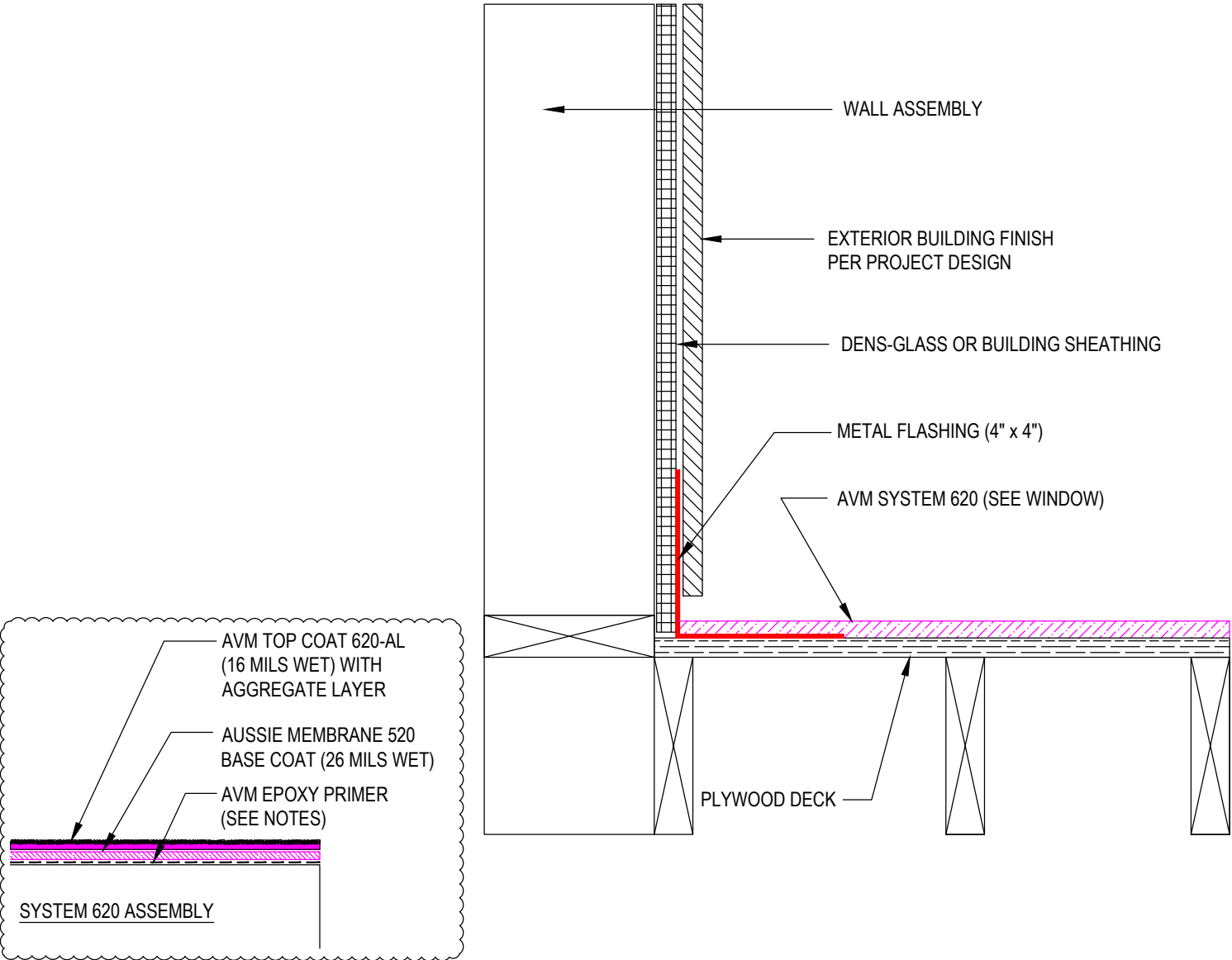
- 1. Epoxy primer may be required to achieve proper adhesion depending on the substrate

DETAIL #:
0620-1115
AVM System 620

Corner Transition with L Metal Plywood Deck



AVM SYSTEM 620 - Pedestrian Deck Coating



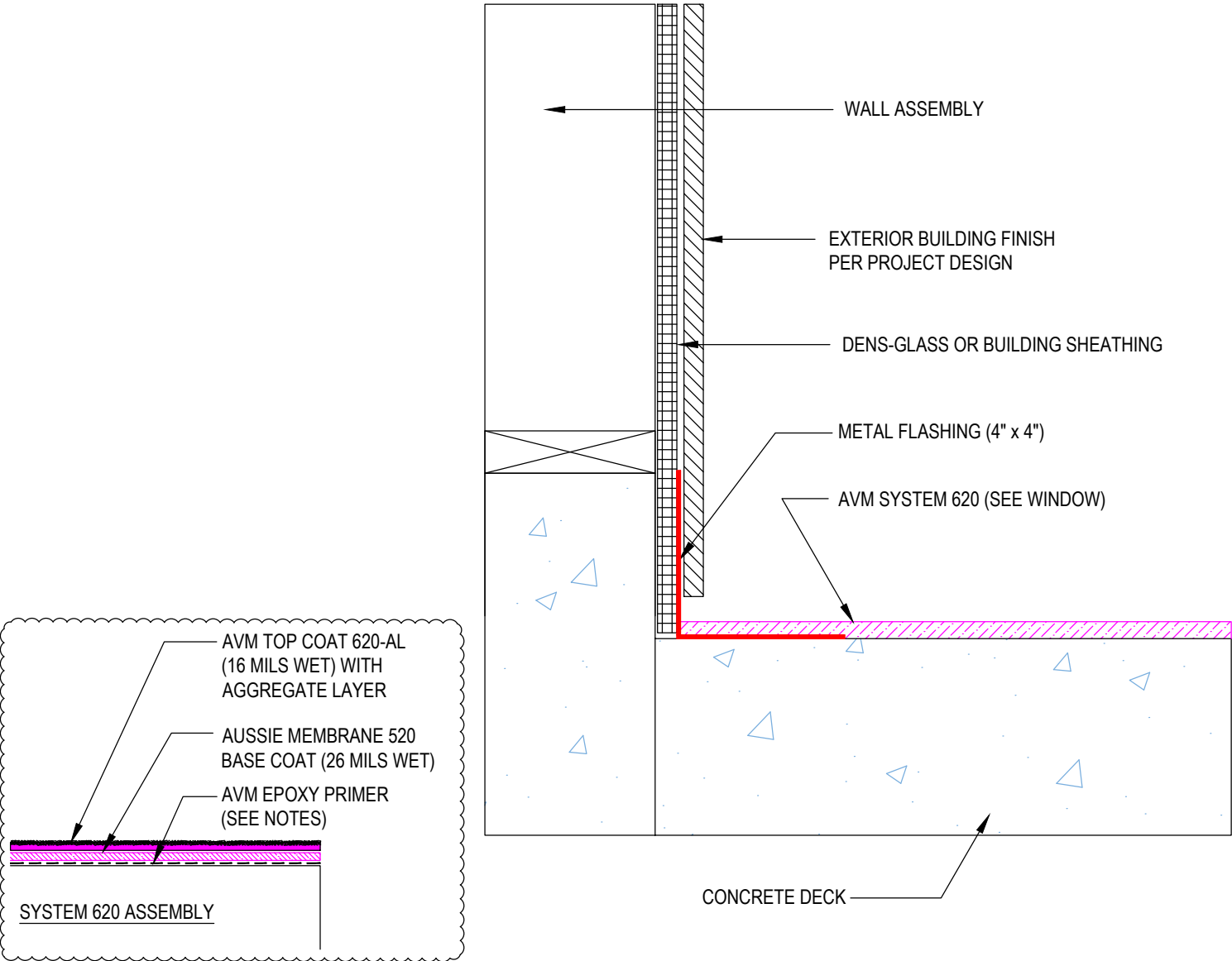
- Notes:**
1. Epoxy primer may be required to achieve proper adhesion depending on the substrate

DETAIL #:
 0620-1120
 AVM System 620

Corner Transition with L Metal -Option 1 Concrete Deck



AVM SYSTEM 620 - Pedestrian Deck Coating



Notes:

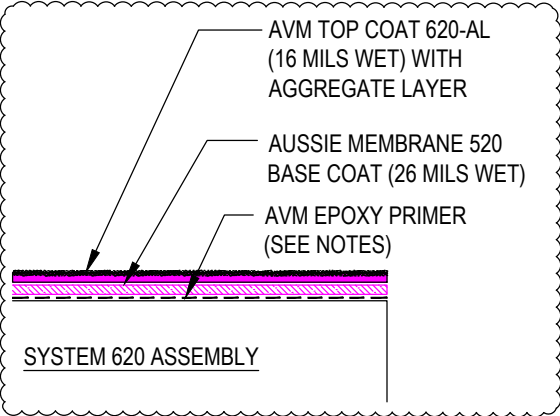
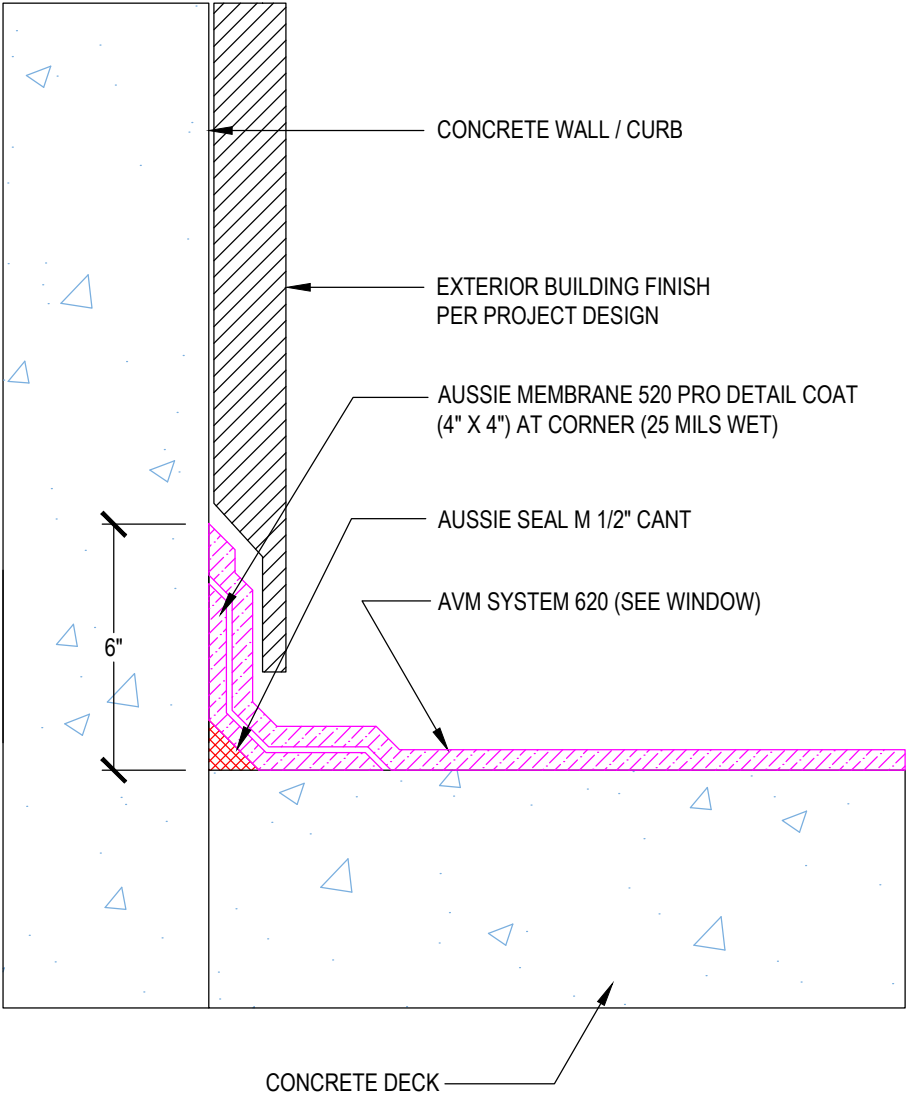
1. Epoxy primer may be required to achieve proper adhesion depending on the substrate

DETAIL #:
0620-1122
 AVM System 620

**Deck to Wall Transition - Option 2
 Concrete Deck**



AVM SYSTEM 620 - Pedestrian Deck Coating



Notes:

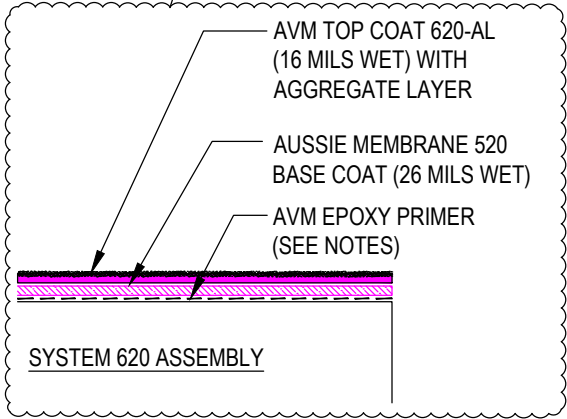
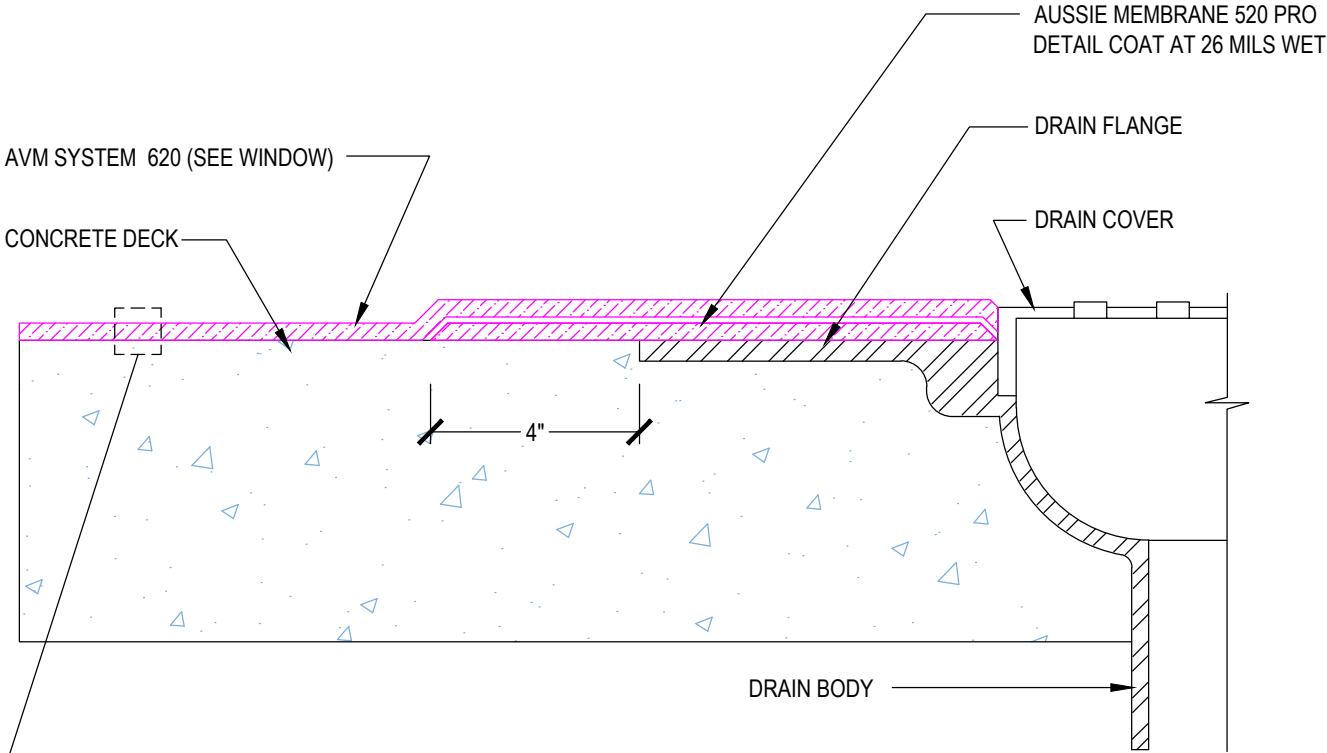
- 1. Epoxy primer may be required to achieve proper adhesion depending on the substrate

DETAIL #:
0620-1300
 AVM System 620

Drain Assembly Concrete Deck



AVM SYSTEM 620 - Pedestrian Deck Coating



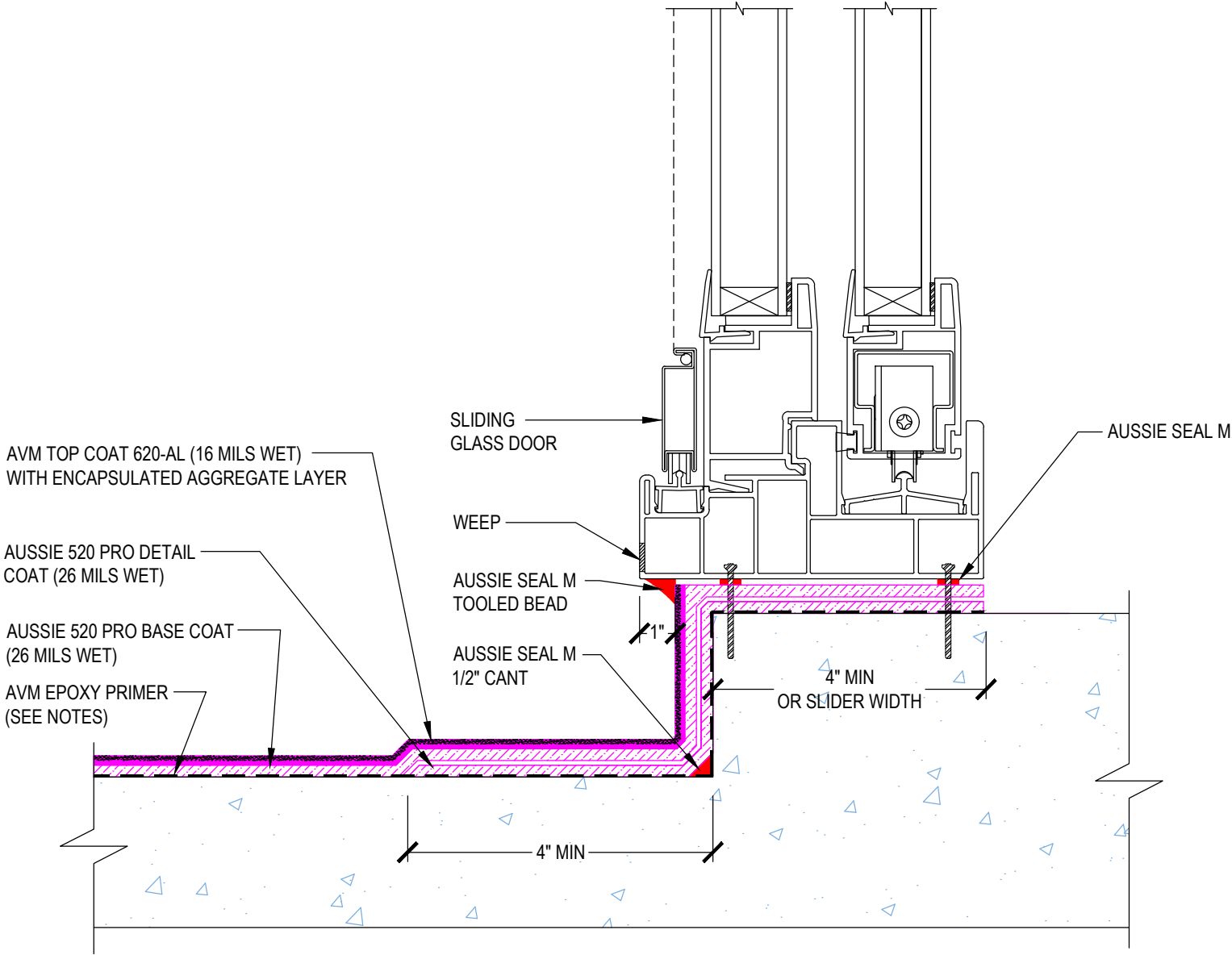
- Notes:**
1. Epoxy primer may be required to achieve proper adhesion depending on the substrate

DETAIL #:
 0620-1400
 AVM System 620

Typical Slider Assembly - Option 1 Concrete Deck



AVM SYSTEM 620 - Pedestrian Deck Coating



Notes:
 1. Epoxy primer may be required to achieve proper adhesion depending on the substrate