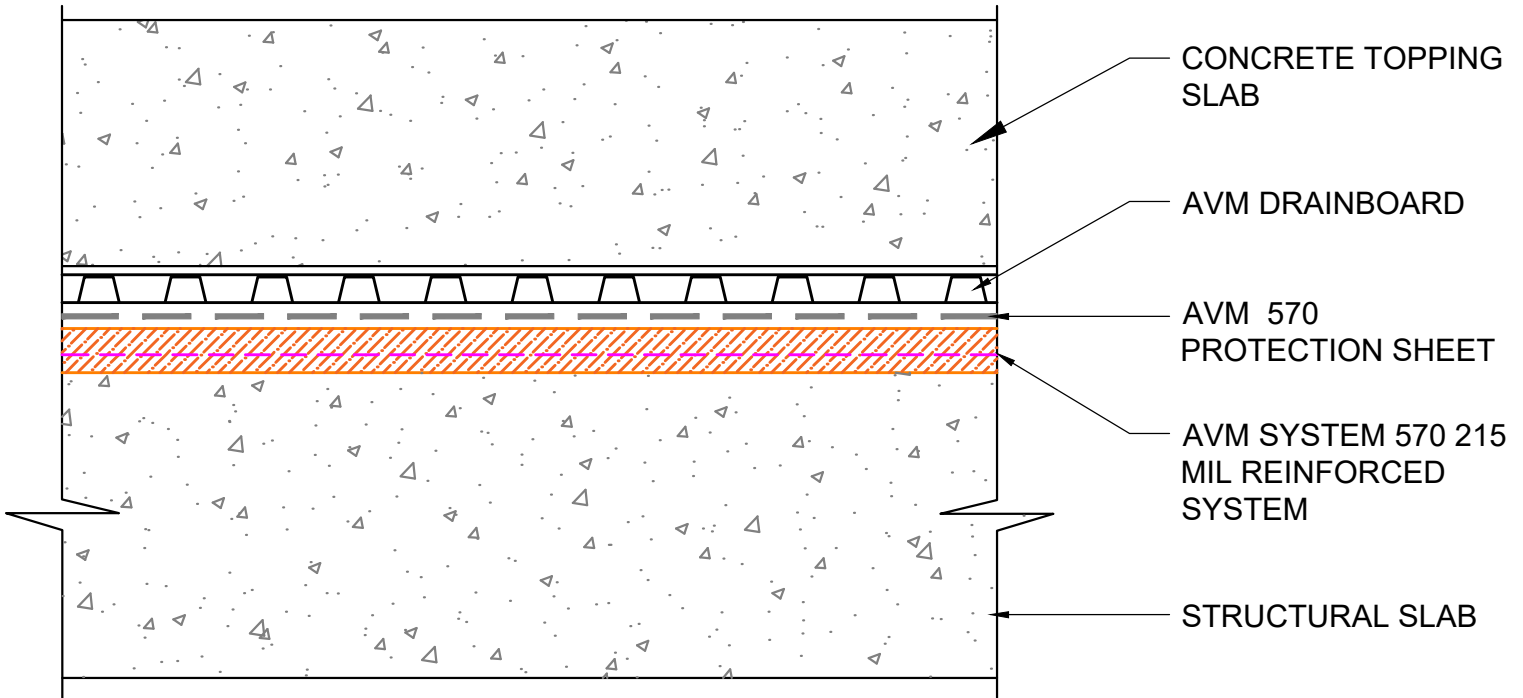


DETAIL #: AVM-0570-0001-C

AVM SYSTEM 570

TYPICAL PLAZA

**Concrete Topping Slab
over Structural Slab
AVM Aussie Membrane 570
Hot Rubber**



USE AVM ADHESIVE 570 ON CONCRETE RECEIVING AVM SYSTEM 570

NOTES:

1. Aussie Membrane 570 is a Hot Rubber(Hot-Applied Asphalt-Based Composition Membrane) for Between-Slabs, Planters, Roof-Gardens and similar type Waterproofing.
2. Typical membrane is 215 mils thick with fabric reinforcement. If specified differently, contact AVM for approval.
3. Contact AVM if no drain board or protection board is specified.
4. Remove/grind/repair as necessary any protrusions, sharp edges, etc that may puncture or damage the membrane.
5. Deck-to-Wall corners must be waterproofed as shown on AVM's Details.
6. Substrates must be sloped to drains and/or edges before membrane installation. (Min 1/4" per foot) Substrates must have sufficient drains and proper drainage systems to effectively evacuate excessive water.
7. If water is to drain over the edge, then edge metals **MUST** have sufficient weep holes (at least every 6") and must be strong enough (thick enough) to act as a concrete form.
8. Many edge details are possible. All must allow for proper water evacuation. (None should trap water) Consult AVM for details.
9. Drainage board for topping Slabs up to 4" thick for pedestrian applications: Use AVM Drain Board 6000.
10. Drainage board for topping slabs over 4" thick or for vehicular applications:Use AVM Drain Board 9000.

AVM Industries, Inc.
8245 Remmet Ave, Canoga Park, CA 91304

Quality Waterproofing Products

888.414.1041 818.888.0050
www.avmindustries.com

FILE NAME: 0570-0001-C-Concrete-Topping-Slab-over-Structural-Slab
Protected by Copyright - AVM Industries, Inc.

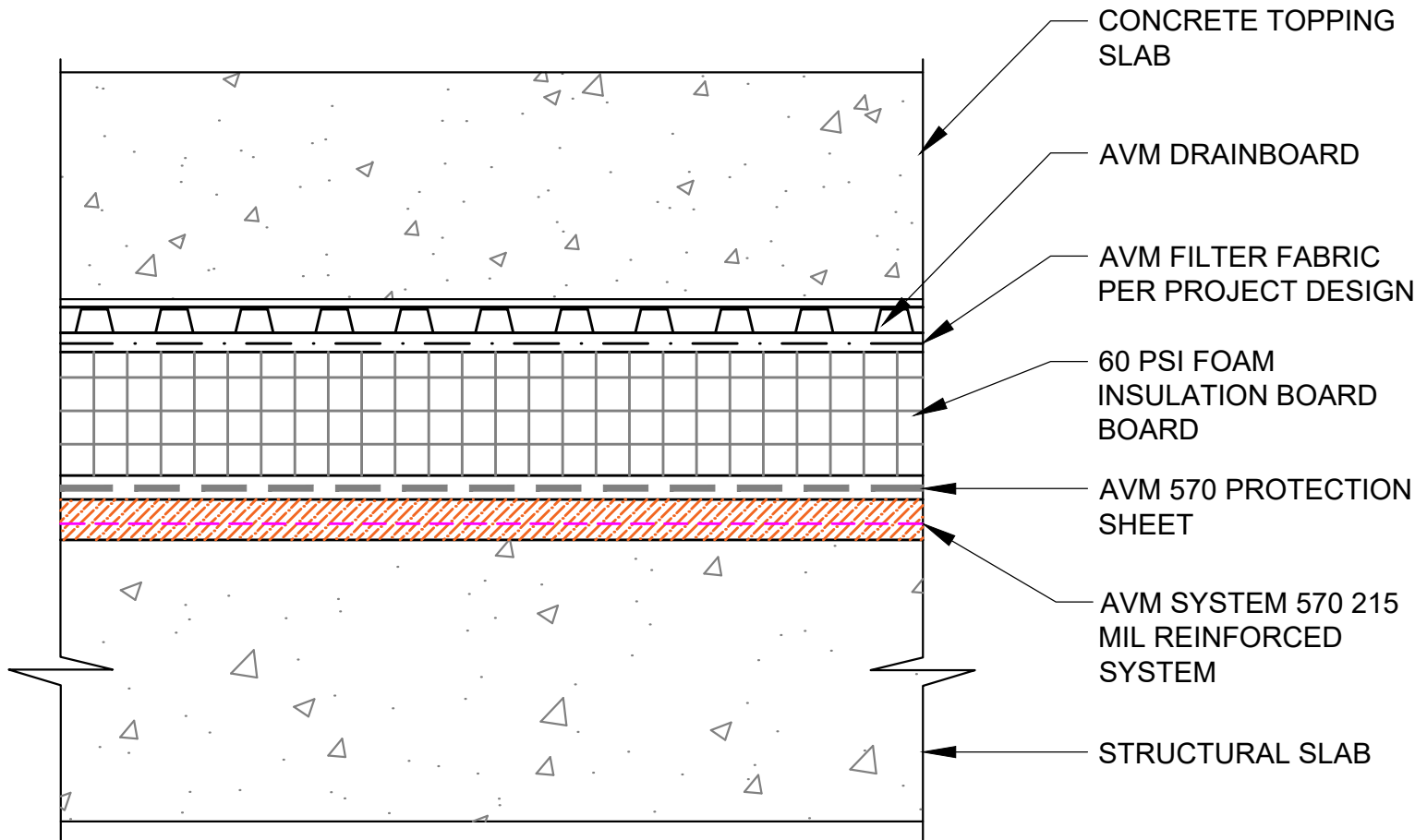
Revision Date 1/23/2019

DETAIL #: AVM-0570-0051-C

AVM SYSTEM 570

TYPICAL PLAZA

Insulated Concrete Topping Layer
over Structural Slab
AVM Aussie Membrane 570
Hot Rubber



USE AVM ADHESIVE 570 ON CONCRETE RECEIVING AVM SYSTEM 570

NOTES:

1. Aussie Membrane 570 is a Hot Rubber(Hot-Applied Asphalt-Based Composition Membrane) for Between-Slabs, Planters, Roof-Gardens and similar type Waterproofing.
2. Typical membrane is 215 mils thick with fabric reinforcement. If specified differently, contact AVM for approval.
3. Contact AVM if no drain board or protection board is specified.
4. Remove/grind/repair as necessary any protrusions, sharp edges, etc that may puncture or damage the membrane.
5. Deck-to-Wall corners must be waterproofed as shown on AVM's Details.
6. Substrates must be sloped to drains and/or edges before membrane installation. (Min 1/4" per foot) Substrates must have sufficient drains and proper drainage systems to effectively evacuate excessive water.
7. If water is to drain over the edge, then edge metals MUST have sufficient weep holes (at least every 6") and must be strong enough (thick enough) to act as a concrete form.
8. Many edge details are possible. All must allow for proper water evacuation. (None should trap water) Consult AVM for details.
9. Drainage board for topping Slabs up to 4" thick for pedestrian applications: Use AVM Drain Board 6000.
10. Drainage board for topping slabs over 4" thick or for vehicular applications:Use AVM Drain Board 9000.

AVM Industries, Inc.
8245 Remmet Ave, Canoga Park, CA 91304

Quality Waterproofing Products

888.414.1041 818.888.0050
www.avmindustries.com

FILE NAME: **0570-0051-C-Insulated-Concrete-Topping-Layer-over-Structural-Slab**

Protected by Copyright - AVM Industries, Inc.

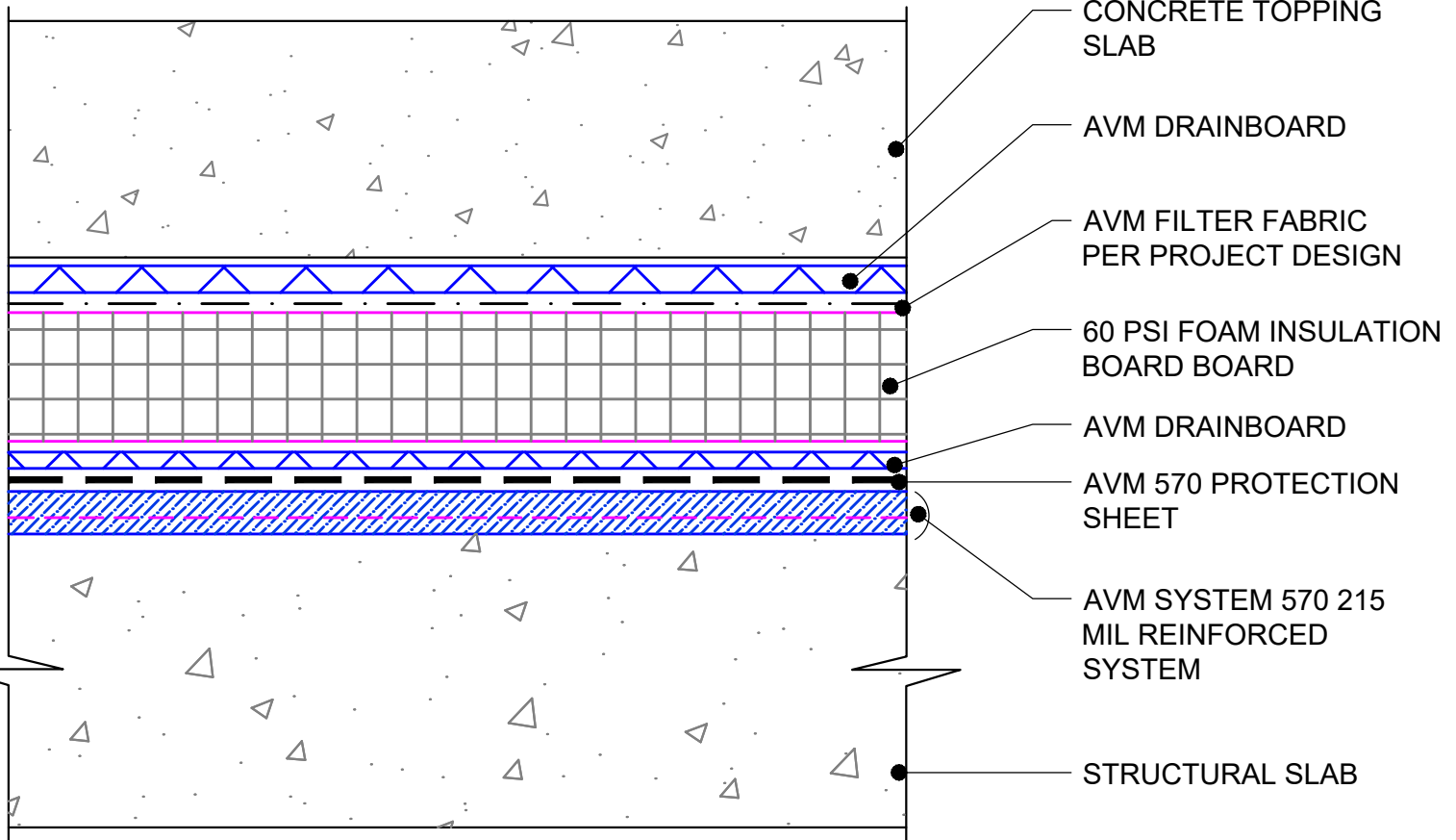
Revision Date 1/23/2019

DETAIL #: AVM-0570-0061-C

AVM SYSTEM 570

TYPICAL PLAZA

Insulated Concrete Topping Layer
with Double Drain Board
over Structural Slab
AVM Aussie Membrane 570
Hot Rubber



USE AVM ADHESIVE 570 ON CONCRETE RECEIVING AVM SYSTEM 570

NOTES:

1. Aussie Membrane 570 is a Hot Rubber(Hot-Applied Asphalt-Based Composition Membrane) for Between-Slabs, Planters, Roof-Gardens and similar type Waterproofing.
2. Typical membrane is 215 mils thick with fabric reinforcement. If specified differently, contact AVM for approval.
3. Contact AVM if no drain board or protection board is specified.
4. Remove/grind/repair as necessary any protrusions, sharp edges, etc that may puncture or damage the membrane.
5. Deck-to-Wall corners must be waterproofed as shown on AVM's Details.
6. Substrates must be sloped to drains and/or edges before membrane installation. (Min 1/4" per foot) Substrates must have sufficient drains and proper drainage systems to effectively evacuate excessive water.
7. If water is to drain over the edge, then edge metals **MUST** have sufficient weep holes (at least every 6") and must be strong enough (thick enough) to act as a concrete form.
8. Many edge details are possible. All must allow for proper water evacuation. (None should trap water) Consult AVM for details.
9. Drainage board for topping Slabs up to 4" thick for pedestrian applications: Use AVM Drain Board 6000.
10. Drainage board for topping slabs over 4" thick or for vehicular applications:Use AVM Drain Board 9000.

AVM Industries, Inc.
8245 Remmet Ave, Canoga Park, CA 91304

Quality Waterproofing Products

888.414.1041 818.888.0050
www.avmindustries.com

FILE NAME: **0570-0061-C-Insulated-Concrete-Topping-Layer-with-Double-Drain-Board-over-Structural-Slab**

Protected by Copyright - AVM Industries, Inc.

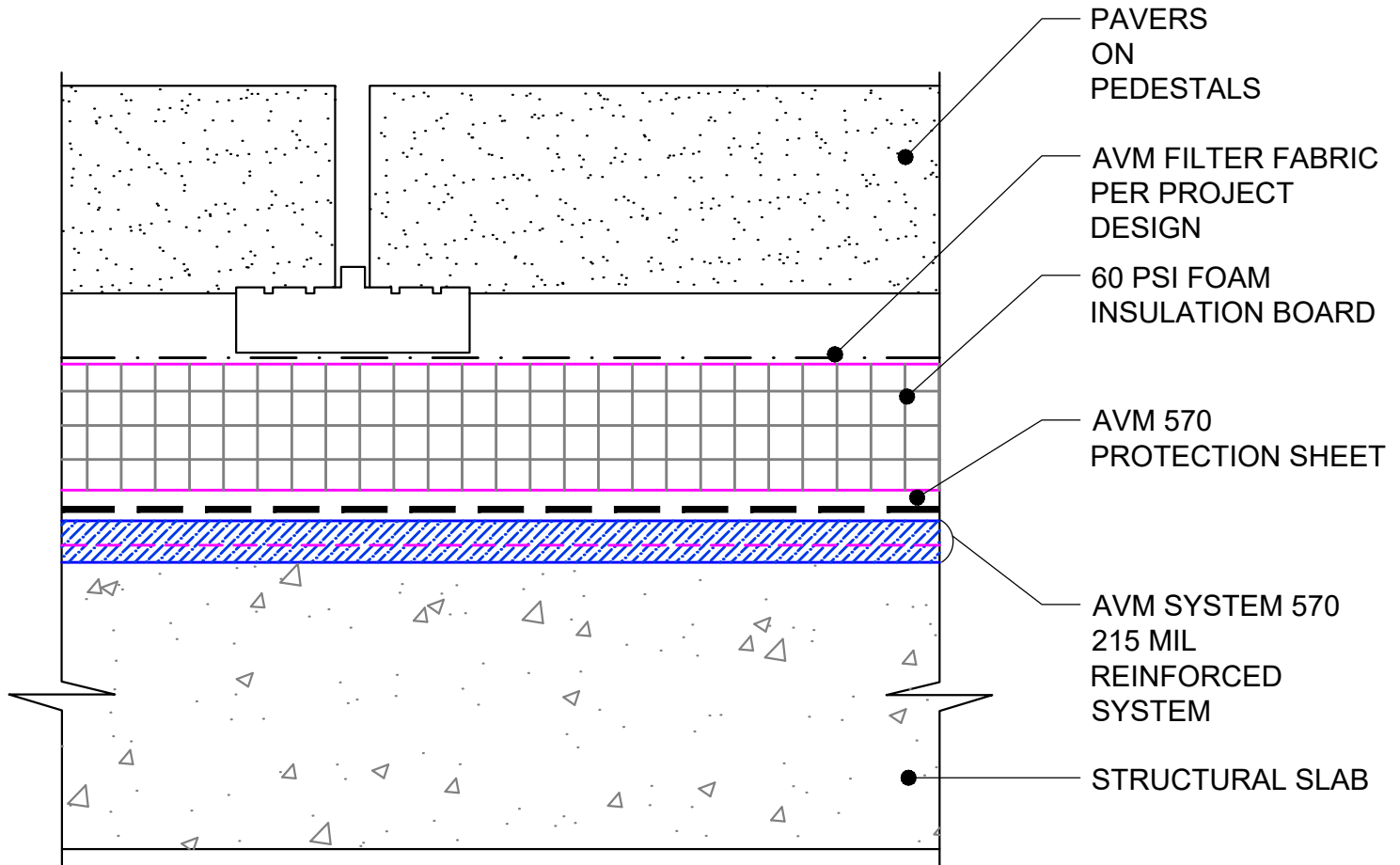
Revision Date 1/23/2019

DETAIL #: AVM-0570-0210-C

AVM SYSTEM 570

PLAZA DECK

Pavers on Pedestals without
Drainboard over Structural Slab
AVM Aussie Membrane 570
Hot Rubber



USE AVM ADHESIVE 570 ON CONCRETE RECEIVING AVM SYSTEM 570

NOTES:

1. Aussie Membrane 570 is a Hot Rubber(Hot-Applied Asphalt-Based Composition Membrane) for Between-Slabs, Planters, Roof-Gardens and similar type Waterproofing.
2. Typical membrane is 215 mils thick with fabric reinforcement. If specified differently, contact AVM for approval.
3. Contact AVM if no drain board or protection board is specified.
4. Remove/grind/repair as necessary any protrusions, sharp edges, etc that may puncture or damage the membrane.
5. Deck-to-Wall corners must be waterproofed as shown on AVM's Details.
6. Substrates must be sloped to drains and/or edges before membrane installation. (Min 1/4" per foot) Substrates must have sufficient drains and proper drainage systems to effectively evacuate excessive water.
7. If water is to drain over the edge, then edge metals MUST have sufficient weep holes (at least every 6") and must be strong enough (thick enough) to act as a concrete form.
8. Many edge details are possible. All must allow for proper water evacuation. (None should trap water) Consult AVM for details.

AVM Industries, Inc.
8245 Remmet Ave, Canoga Park, CA 91304

Quality Waterproofing Products

888.414.1041 818.888.0050
www.avmindustries.com

FILE NAME: **0570-0210-C-Pavers-on-Pedestals-without-Drainboard-over-Structural-Slab**

Protected by Copyright - AVM Industries, Inc.

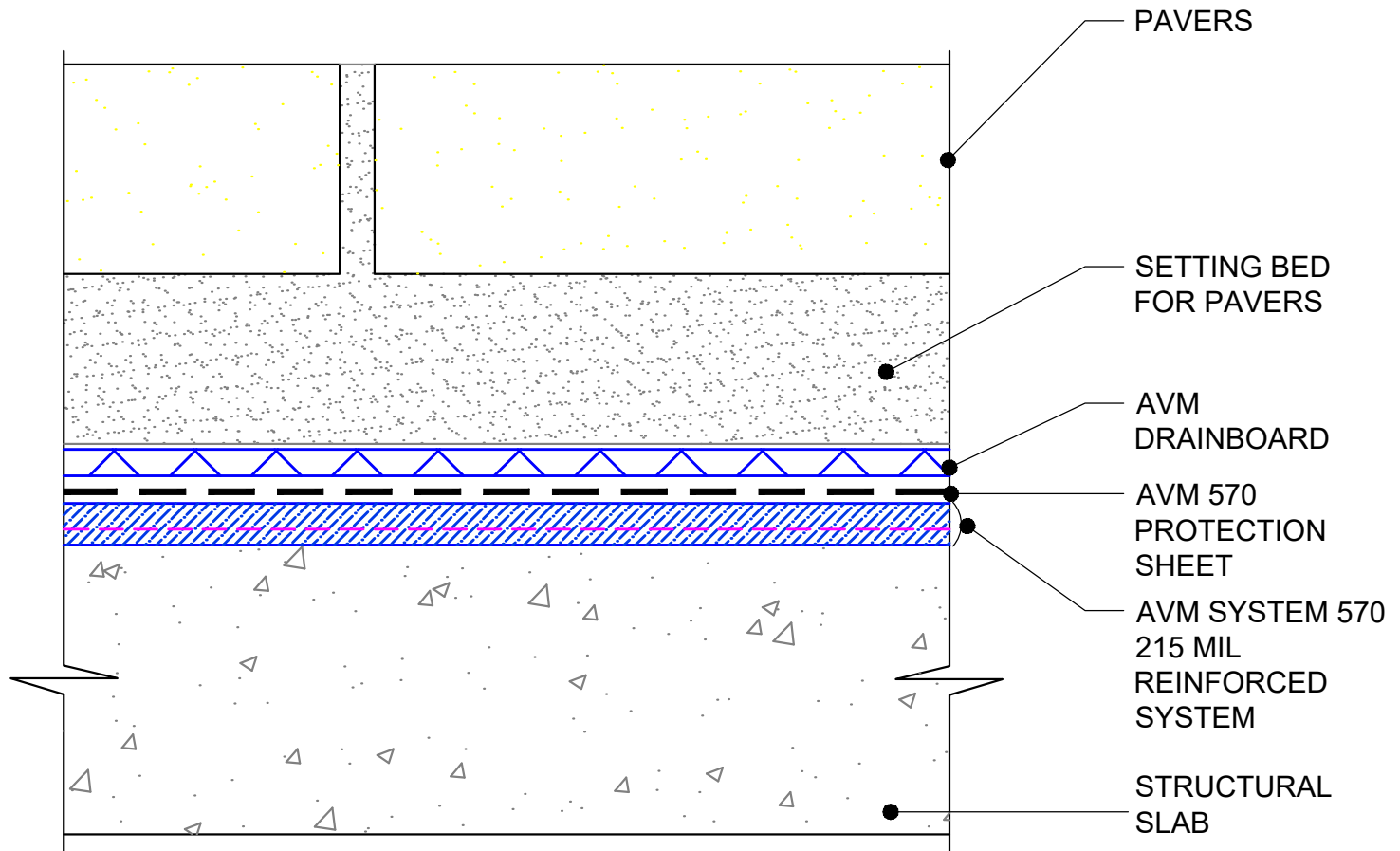
Revision Date 1/23/2019

DETAIL #: AVM-0570-0230-C

AVM SYSTEM 570

PLAZA DECK

Pavers in Setting Bed
over Structural Slab
AVM Aussie Membrane 570
Hot Rubber



USE AVM ADHESIVE 570 ON CONCRETE RECEIVING AVM SYSTEM 570

NOTES:

1. Aussie Membrane 570 is a Hot Rubber(Hot-Applied Asphalt-Based Composition Membrane) for Between-Slabs, Planters, Roof-Gardens and similar type Waterproofing.
2. Typical membrane is 215 mils thick with fabric reinforcement. If specified differently, contact AVM for approval.
3. Contact AVM if no drain board or protection board is specified.
4. Remove/grind/repair as necessary any protrusions, sharp edges, etc that may puncture or damage the membrane.
5. Deck-to-Wall corners must be waterproofed as shown on AVM's Details.
6. Substrates must be sloped to drains and/or edges before membrane installation. (Min 1/4" per foot) Substrates must have sufficient drains and proper drainage systems to effectively evacuate excessive water.
7. If water is to drain over the edge, then edge metals MUST have sufficient weep holes (at least every 6") and must be strong enough (thick enough) to act as a concrete form.
8. Many edge details are possible. All must allow for proper water evacuation. (None should trap water) Consult AVM for details.
9. Drainage board for topping Slabs up to 4" thick for pedestrian applications: Use AVM Drain Board 6000.
10. Drainage board for topping slabs over 4" thick or for vehicular applications:Use AVM Drain Board 9000.

AVM Industries, Inc.
8245 Remmet Ave, Canoga Park, CA 91304

Quality Waterproofing Products

888.414.1041 818.888.0050
www.avmindustries.com

FILE NAME: **0570-0230-C-Pavers-in-Setting-Bed-over-Structural-Slab**
Protected by Copyright - AVM Industries, Inc.

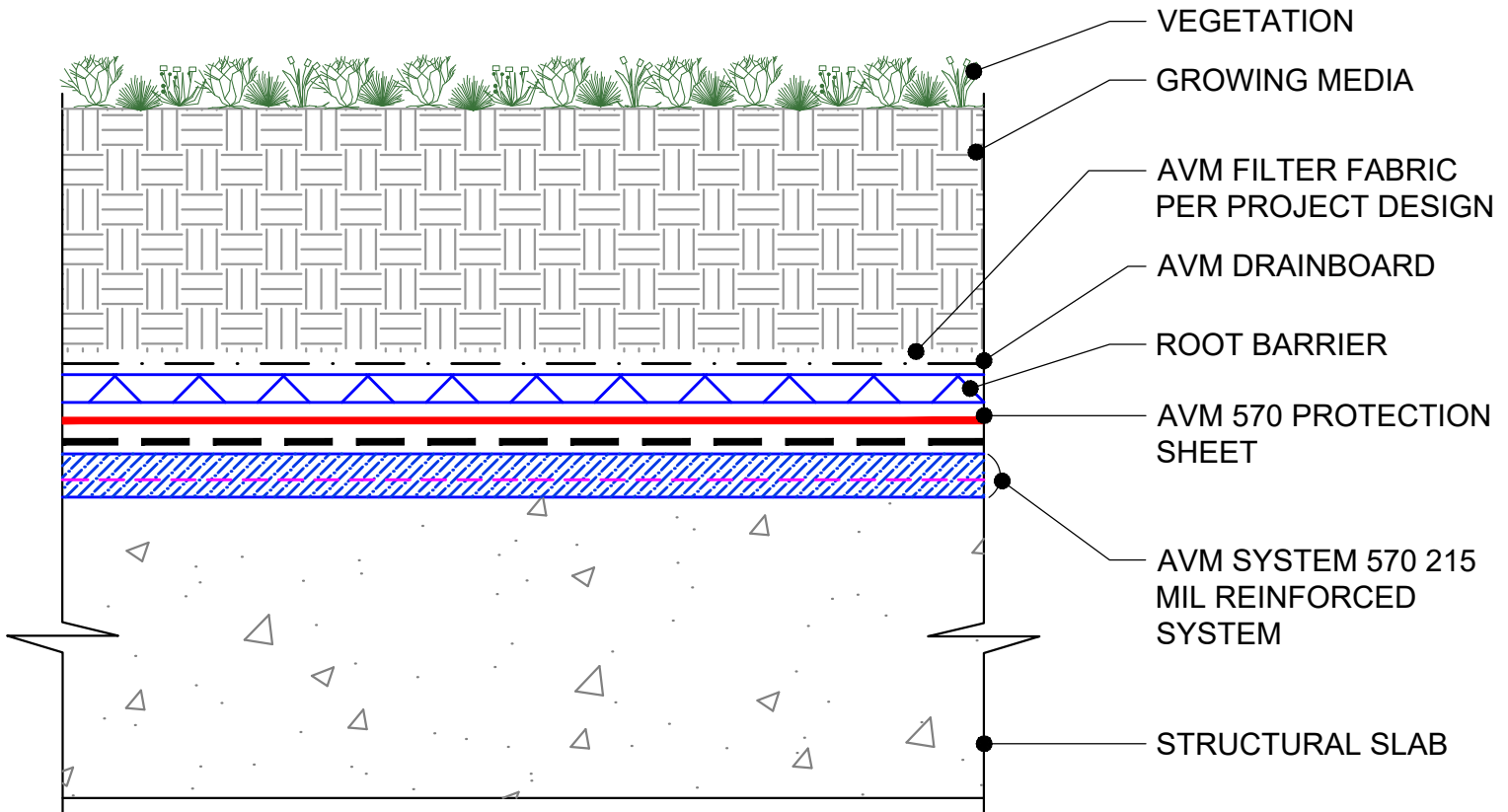
Revision Date 1/23/2019

DETAIL #: AVM-0570-0401-C

AVM SYSTEM 570

TYPICAL PLAZA

Landscaped Assembly
over Structural Slab
AVM Aussie Membrane 570
Hot Rubber



USE AVM ADHESIVE 570 ON CONCRETE RECEIVING AVM SYSTEM 570

NOTES:

1. Aussie Membrane 570 is a Hot Rubber(Hot-Applied Asphalt-Based Composition Membrane) for Between-Slabs, Planters, Roof-Gardens and similar type Waterproofing.
2. Typical membrane is 215 mils thick with fabric reinforcement. If specified differently, contact AVM for approval.
3. Contact AVM if no drain board or protection board is specified.
4. Remove/grind/repair as necessary any protrusions, sharp edges, etc that may puncture or damage the membrane.
5. Deck-to-Wall corners must be waterproofed as shown on AVM's Details.
6. Substrates must be sloped to drains and/or edges before membrane installation. (Min 1/4" per foot) Substrates must have sufficient drains and proper drainage systems to effectively evacuate excessive water.

AVM Industries, Inc.
8245 Remmet Ave, Canoga Park, CA 91304

Quality Waterproofing Products

888.414.1041 818.888.0050
www.avmindustries.com

FILE NAME: 0570-0401-C-Landscaped-Assembly-over-Structural-Slab

Protected by Copyright - AVM Industries, Inc.

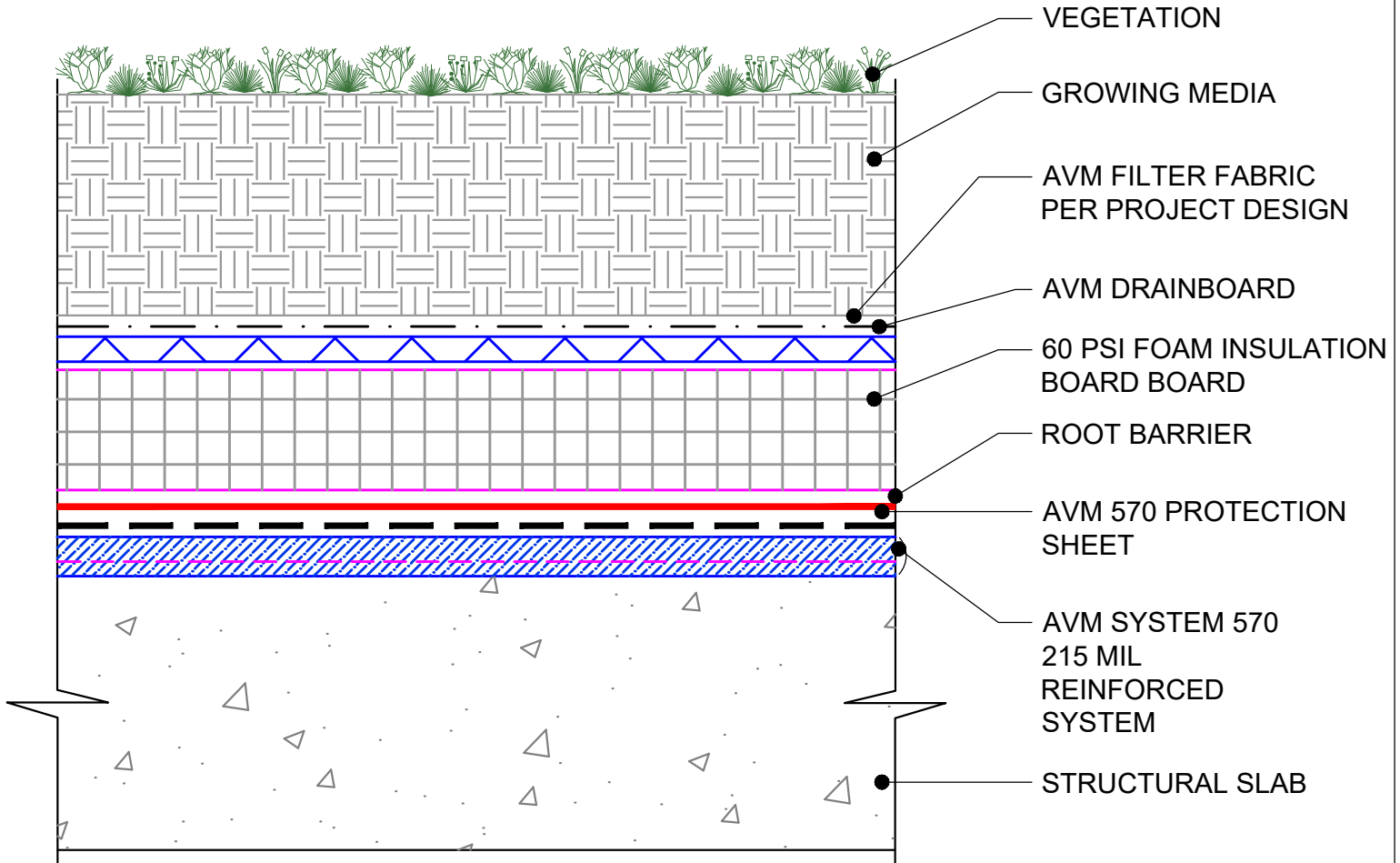
Revision Date 1/23/2019

DETAIL #: AVM-0570-0451-C

AVM SYSTEM 570

TYPICAL PLAZA

**Insulated Landscaped Assembly
over Structural Slab
AVM Aussie Membrane 570
Hot Rubber**



USE AVM ADHESIVE 570 ON CONCRETE RECEIVING AVM SYSTEM 570

NOTES:

1. Aussie Membrane 570 is a Hot Rubber(Hot-Applied Asphalt-Based Composition Membrane) for Between-Slabs, Planters, Roof-Gardens and similar type Waterproofing.
2. Typical membrane is 215 mils thick with fabric reinforcement. If specified differently, contact AVM for approval.
3. Contact AVM if no drain board or protection board is specified.
4. Remove/grind/repair as necessary any protrusions, sharp edges, etc that may puncture or damage the membrane.
5. Deck-to-Wall corners must be waterproofed as shown on AVM's Details.
6. Substrates must be sloped to drains and/or edges before membrane installation. (Min 1/4" per foot) Substrates must have sufficient drains and proper drainage systems to effectively evacuate excessive water.

AVM Industries, Inc.
8245 Remmet Ave, Canoga Park, CA 91304

Quality Waterproofing Products

888.414.1041 818.888.0050
www.avmindustries.com

FILE NAME: 0570-0451-C-Insulated-Landscaped-Assembly-over-Structural-Slab

Protected by Copyright - AVM Industries, Inc.

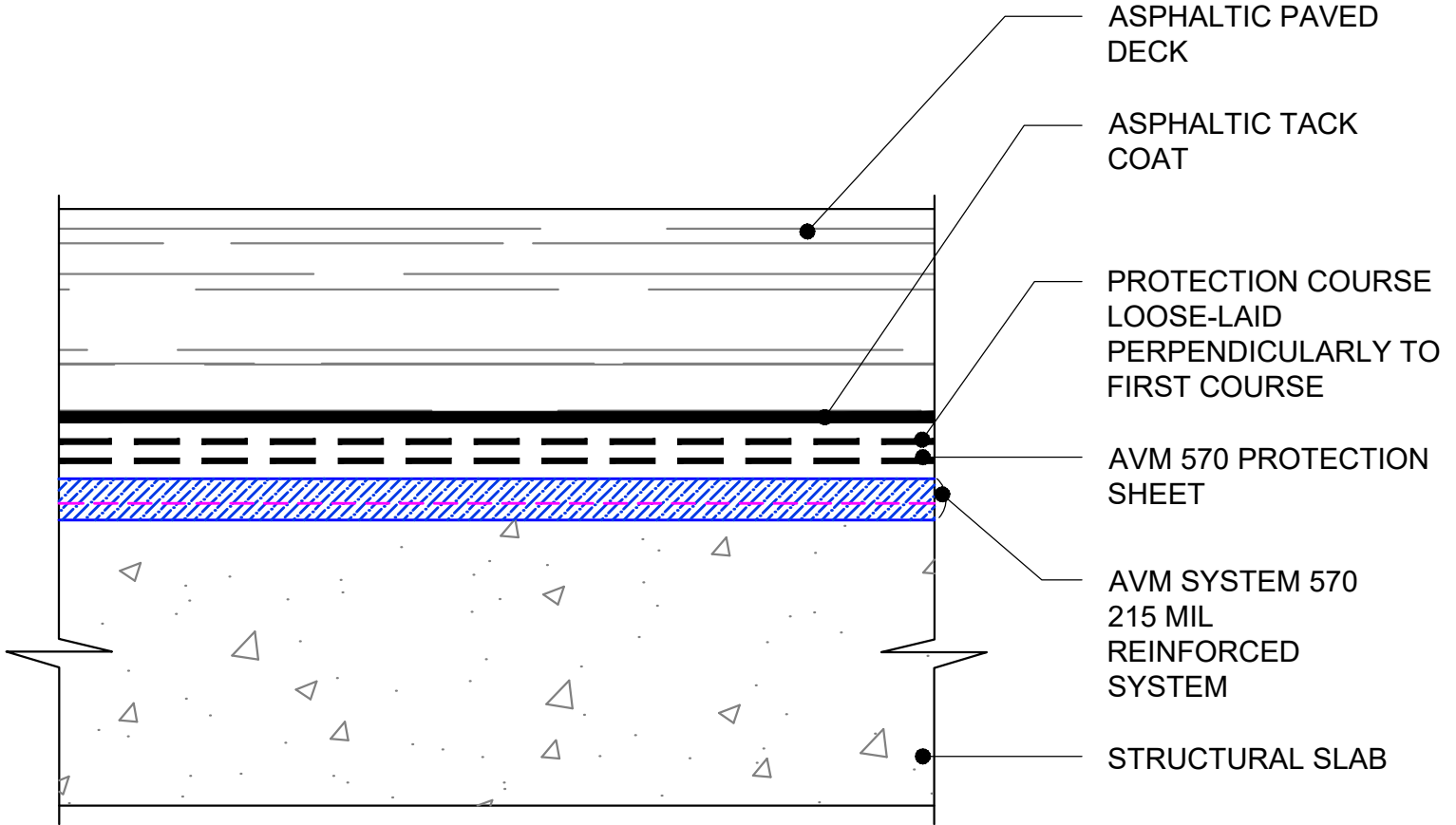
Revision Date 1/23/2019

DETAIL #: AVM-0570-0601-C

AVM SYSTEM 570

TYPICAL PLAZA

Asphalt Paved Deck
over Structural Slab
AVM Aussie Membrane 570
Hot Rubber



USE AVM ADHESIVE 570 ON CONCRETE RECEIVING AVM SYSTEM 570

NOTES:

1. Aussie Membrane 570 is a Hot Rubber(Hot-Applied Asphalt-Based Composition Membrane) for Between-Slabs, Planters, Roof-Gardens and similar type Waterproofing.
2. Typical membrane is 215 mils thick with fabric reinforcement. If specified differently, contact AVM for approval.
3. Contact AVM if no drain board or protection board is specified.
4. Remove/grind/repair as necessary any protrusions, sharp edges, etc that may puncture or damage the membrane.
5. Deck-to-Wall corners must be waterproofed as shown on AVM's Details.
6. Substrates must be sloped to drains and/or edges before membrane installation. (Min 1/4" per foot) Substrates must have sufficient drains and proper drainage systems to effectively evacuate excessive water.

AVM Industries, Inc.
8245 Remmet Ave, Canoga Park, CA 91304

Quality Waterproofing Products

888.414.1041 818.888.0050
www.avmindustries.com

FILE NAME: **0570-0601-C-Asphalt-Paved-Deck-over-Structural-Slab**
Protected by Copyright - AVM Industries, Inc.

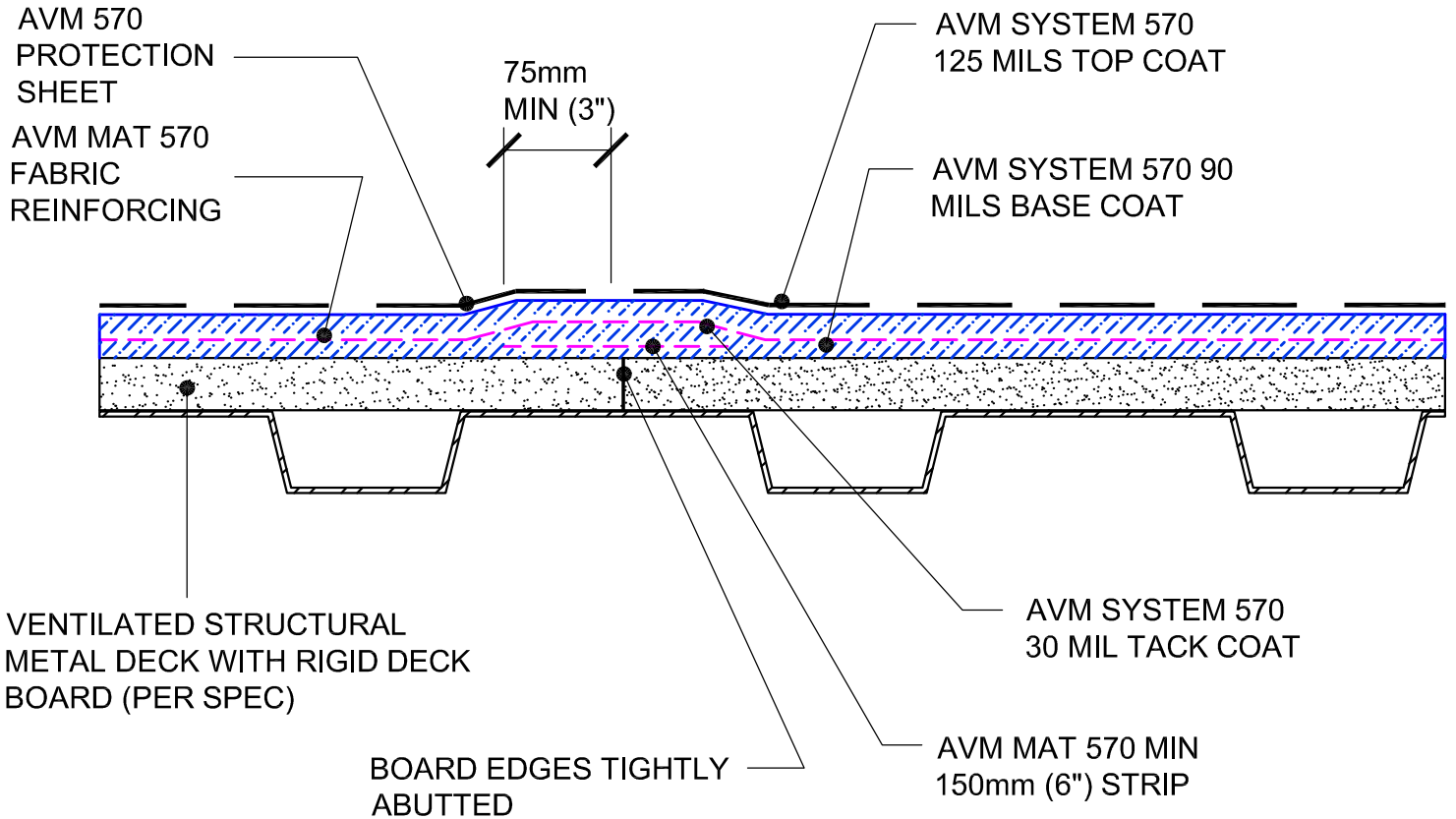
Revision Date 1/23/2019

DETAIL #: AVM-0570-2001-M

AVM SYSTEM 570

METAL DECK

Reinforced Hot Rubber over
Metal Deck with Deck Board
Neoprene Flashing at Joint Detail
AVM Aussie Membrane 570
Hot Rubber



NOTES:

1. Aussie Membrane 570 is a Hot Rubber(Hot-Applied Asphalt-Based Composition Membrane) for Between-Slabs, Planters, Roof-Gardens and similar type Waterproofing.
2. Typical membrane is 215 mils thick with fabric reinforcement. If specified differently, contact AVM for approval.
3. Contact AVM if no drain board or protection board is specified.
4. Remove/grind/repair as necessary any protrusions, sharp edges, etc that may puncture or damage the membrane.
5. Deck-to-Wall corners must be waterproofed as shown on AVM's Details.
6. Substrates must be sloped to drains and/or edges before membrane installation. (Min 1/4" per foot) Substrates must have sufficient drains and proper drainage systems to effectively evacuate excessive water.
7. Drainage board for topping Slabs up to 4" thick for pedestrian applications: Use AVM Drain Board 6000.
8. Drainage board for topping slabs over 4" thick or for vehicular applications:Use AVM Drain Board 9000.
9. Structural metal decks must be ventilated.

AVM Industries, Inc.
8245 Remmet Ave, Canoga Park, CA 91304

Quality Waterproofing Products

888.414.1041 818.888.0050
www.avmindustries.com

FILE NAME: 0570-2001-M-Reinforced-Hot-Rubber-over-Metal-Deck-With-Deck-Board-Neoprene-Flashing-at-Joint-Detail

Protected by Copyright - AVM Industries, Inc.

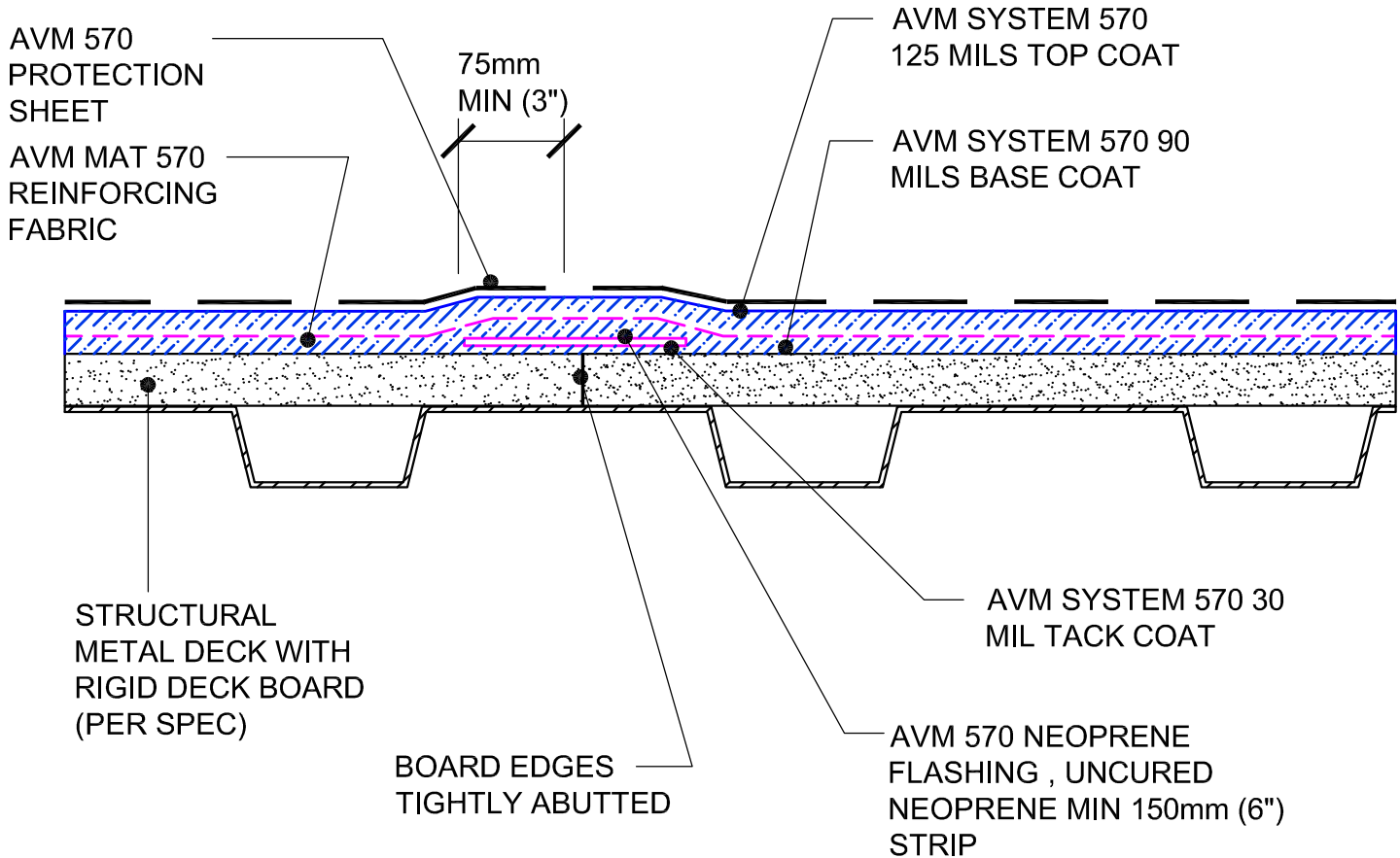
Revision Date 1/23/2019

DETAIL #: AVM-0570-2021-M

AVM SYSTEM 570

METAL DECK

Reinforced Hot Rubber
at Cold Joints
AVM Aussie Membrane 570
Hot Rubber



NOTES:

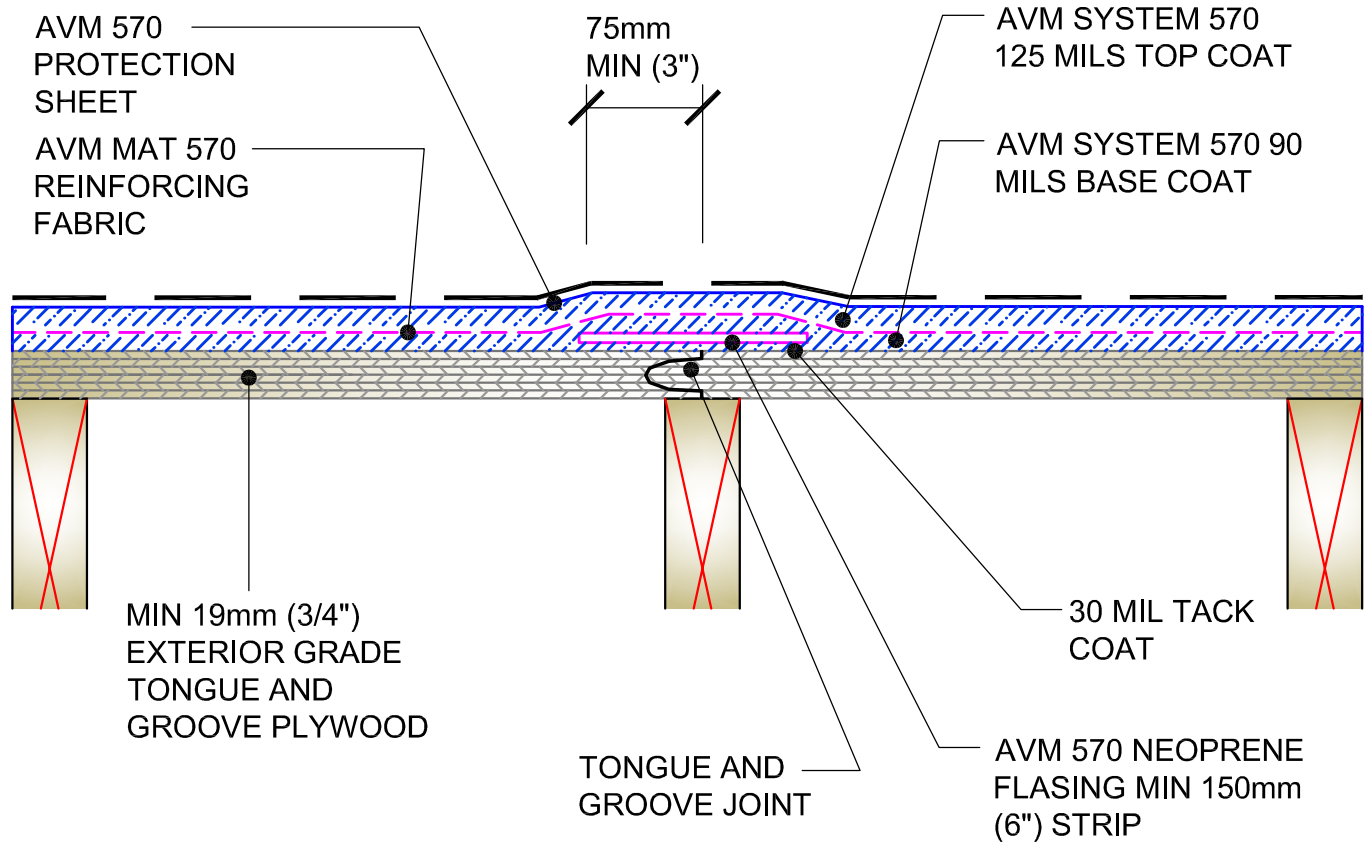
1. Aussie Membrane 570 is a Hot Rubber(Hot-Applied Asphalt-Based Composition Membrane) for Between-Slabs, Planters, Roof-Gardens and similar type Waterproofing.
2. Typical membrane is 215 mils thick with fabric reinforcement. If specified differently, contact AVM for approval.
3. Contact AVM if no drain board or protection board is specified.
4. Remove/grind/repair as necessary any protrusions, sharp edges, etc that may puncture or damage the membrane.
5. Deck-to-Wall corners must be waterproofed as shown on AVM's Details.
6. Substrates must be sloped to drains and/or edges before membrane installation. (Min 1/4" per foot) Substrates must have sufficient drains and proper drainage systems to effectively evacuate excessive water.
7. Drainage board for topping Slabs up to 4" thick for pedestrian applications: Use AVM Drain Board 6000.
8. Drainage board for topping slabs over 4" thick or for vehicular applications:Use AVM Drain Board 9000.
9. Structural metal decks must be ventilated.

DETAIL #: AVM-0570-2501-W

AVM SYSTEM 570

PLYWOOD DECK

Reinforced Hot Rubber over
Tongue and Groove Plywood
Neoprene Flushing at Joint Details
AVM Aussie Membrane 570
Hot Rubber



NOTES:

1. Aussie Membrane 570 is a Hot Rubber(Hot-Applied Asphalt-Based Composition Membrane) for Between-Slabs, Planters, Roof-Gardens and similar type Waterproofing.
2. Typical membrane is 215 mils thick with fabric reinforcement. If specified differently, contact AVM for approval.
3. Contact AVM if no drain board or protection board is specified.
4. Remove/grind/repair as necessary any protrusions, sharp edges, etc that may puncture or damage the membrane.
5. Deck-to-Wall corners must be waterproofed as shown on AVM's Details.
6. Substrates must be sloped to drains and/or edges before membrane installation. (Min 1/4" per foot) Substrates must have sufficient drains and proper drainage systems to effectively evacuate excessive water.
7. If water is to drain over the edge, then edge metals MUST have sufficient weep holes (at least every 6") and must be strong enough (thick enough) to act as a concrete form.
8. Many edge details are possible. All must allow for proper water evacuation. (None should trap water) Consult AVM for details.
9. Make sure all nails are flush with the plywood surface or slightly sunken in below it. (Nails protruding above the plywood surface may puncture the membrane)
10. Reinforce the Aussie Membrane 570 at all plywood joints, cracks, metal transitions, penetrations, drains, etc.

AVM Industries, Inc.
8245 Remmet Ave, Canoga Park, CA 91304

Quality Waterproofing Products

888.414.1041 818.888.0050
www.avmindustries.com

FILE NAME: 0570-2501-W-Reinforced-Hot-Rubber-over-Tongue-and-Groove-Plywood-Neoprene-Flushing-at-Joint-Details

Protected by Copyright - AVM Industries, Inc.

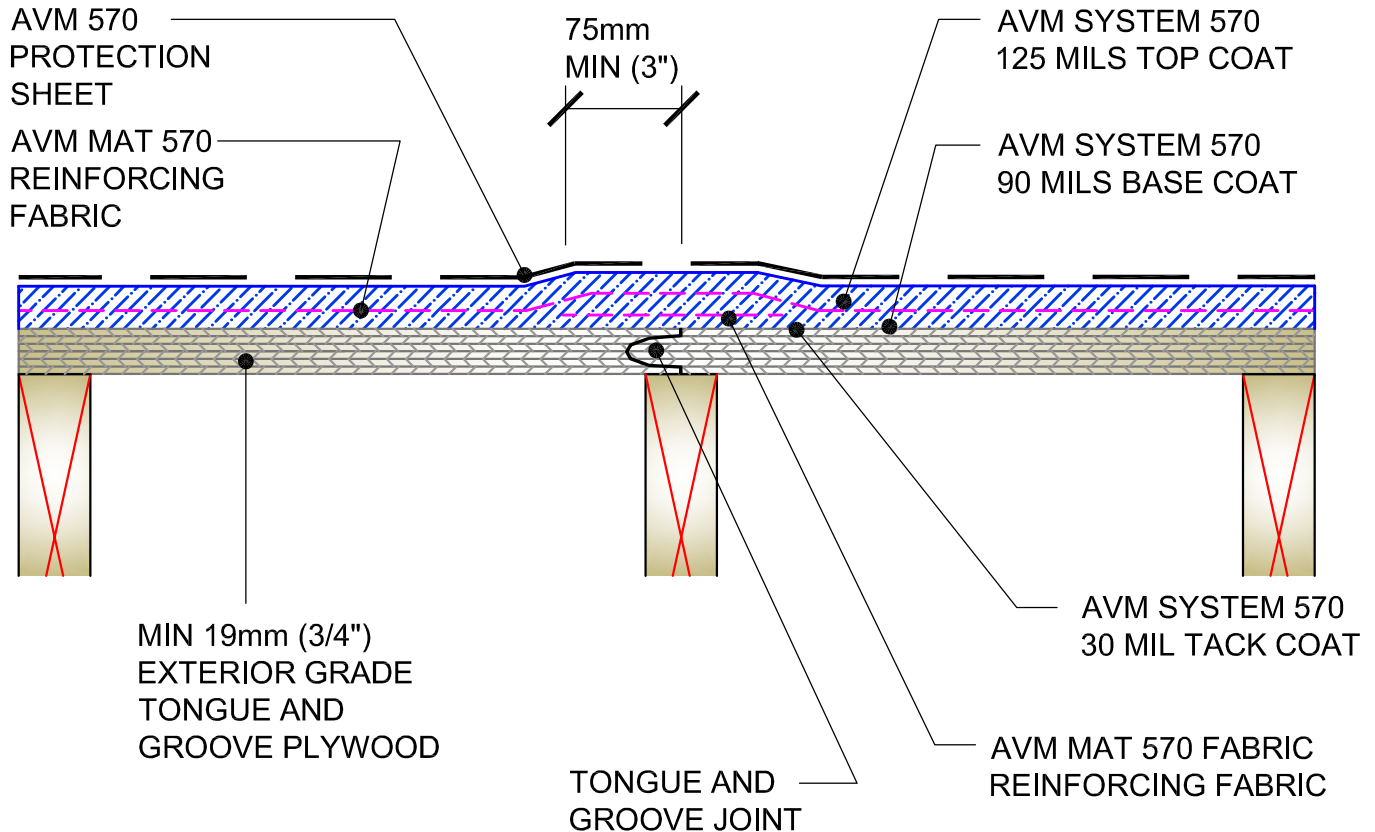
Revision Date 1/23/2019

DETAIL #: AVM-0570-2521-W

AVM SYSTEM 570

PLYWOOD DECK

**Reinforced Hot Rubber over
Tongue and Groove Plywood
Fabric Reinforcement at Joint Detail
AVM Aussie Membrane 570
Hot Rubber**



NOTES:

1. Aussie Membrane 570 is a Hot Rubber(Hot-Applied Asphalt-Based Composition Membrane) for Between-Slabs, Planters, Roof-Gardens and similar type Waterproofing.
2. Typical membrane is 215 mils thick with fabric reinforcement. If specified differently, contact AVM for approval.
3. Contact AVM if no drain board or protection board is specified.
4. Remove/grind/repair as necessary any protrusions, sharp edges, etc that may puncture or damage the membrane.
5. Deck-to-Wall corners must be waterproofed as shown on AVM's Details.
6. Substrates must be sloped to drains and/or edges before membrane installation. (Min 1/4" per foot) Substrates must have sufficient drains and proper drainage systems to effectively evacuate excessive water.
7. If water is to drain over the edge, then edge metals MUST have sufficient weep holes (at least every 6") and must be strong enough (thick enough) to act as a concrete form.
8. Many edge details are possible. All must allow for proper water evacuation. (None should trap water) Consult AVM for details.
9. Make sure all nails are flush with the plywood surface or slightly sunken in below it. (Nails protruding above the plywood surface may puncture the membrane)
10. Reinforce the Aussie Membrane 570 at all plywood joints, cracks, metal transitions, penetrations, drains, etc.

AVM Industries, Inc.
8245 Remmet Ave, Canoga Park, CA 91304

Quality Waterproofing Products

888.414.1041 818.888.0050
www.avmindustries.com

FILE NAME: **0570-2521-W/Reinforced-Hot-Rubber-over-Tongue-and-Groove-Plywood-Fabric-Reinforcement-at-Joint-Detail**

Protected by Copyright - AVM Industries, Inc.

Revision Date 1/23/2019

DETAIL #: AVM-0570-4001

AVM SYSTEM 570

PLAZA DECK

Deck to Wall Inside Corner Detail
AVM Aussie Membrane 570
Hot Rubber



AVM SYSTEM
570 30 MIL
TACK COAT

WALL

AVM 570
NEOPRENE
FLASHING

SETTING BED
FOR PAVERS

AVM SYSTEM
570 30 MIL
TACK COAT

WALL

PLAZA DECK

AVM 570
NEOPRENE
FLASHING

PLAZA DECK

STEP 1

APPLY TACK COAT
AND INSTALL FIRST
LAYER OF FLASHING
AS SHOWN

STEP 2

APPLY ANOTHER TACK
COAT AND INSTALL
SECOND LAYER OF
FLASHING AS SHOWN

WALL

PLAZA DECK

STEP 3

COMPLETELY COAT NEOPRENE FLASHING WITH AVM SYSTEM 570
IMMEDIATELY AFTER INSTALLATION

AVM Industries, Inc.
8245 Remmet Ave, Canoga Park, CA 91304

Quality Waterproofing Products

888.414.1041 818.888.0050
www.avmindustries.com

FILE NAME: 0570-4001-Deck-to-Wall-Inside-Corner-Detail
Protected by Copyright - AVM Industries, Inc.

Revision Date 1/23/2019

DETAIL #: AVM-0570-4011

AVM SYSTEM 570

PLAZA DECK

Deck to Wall Outside Corner Detail
AVM Aussie Membrane 570
Hot Rubber



AVM SYSTEM 570 30 ML
TACK COAT

WALL

PLAZA DECK

AVM 570
NEOPRENE
FLASHING

WALL

AVM 570 NEOPRENE
FLASHING

PLAZA DECK

STEP 1

APPLY ADHESIVE AND
INSTALL FIRST LAYER OF
FLASHING AS SHOWN

AVM SYSTEM
570 30 ML TACK
COAT

WALL

STEP 2

APPLY ANOTHER TACK
COAT AND INSTALL
SECOND LAYER OF
FLASHING AS SHOWN

PLAZA DECK

STEP 3

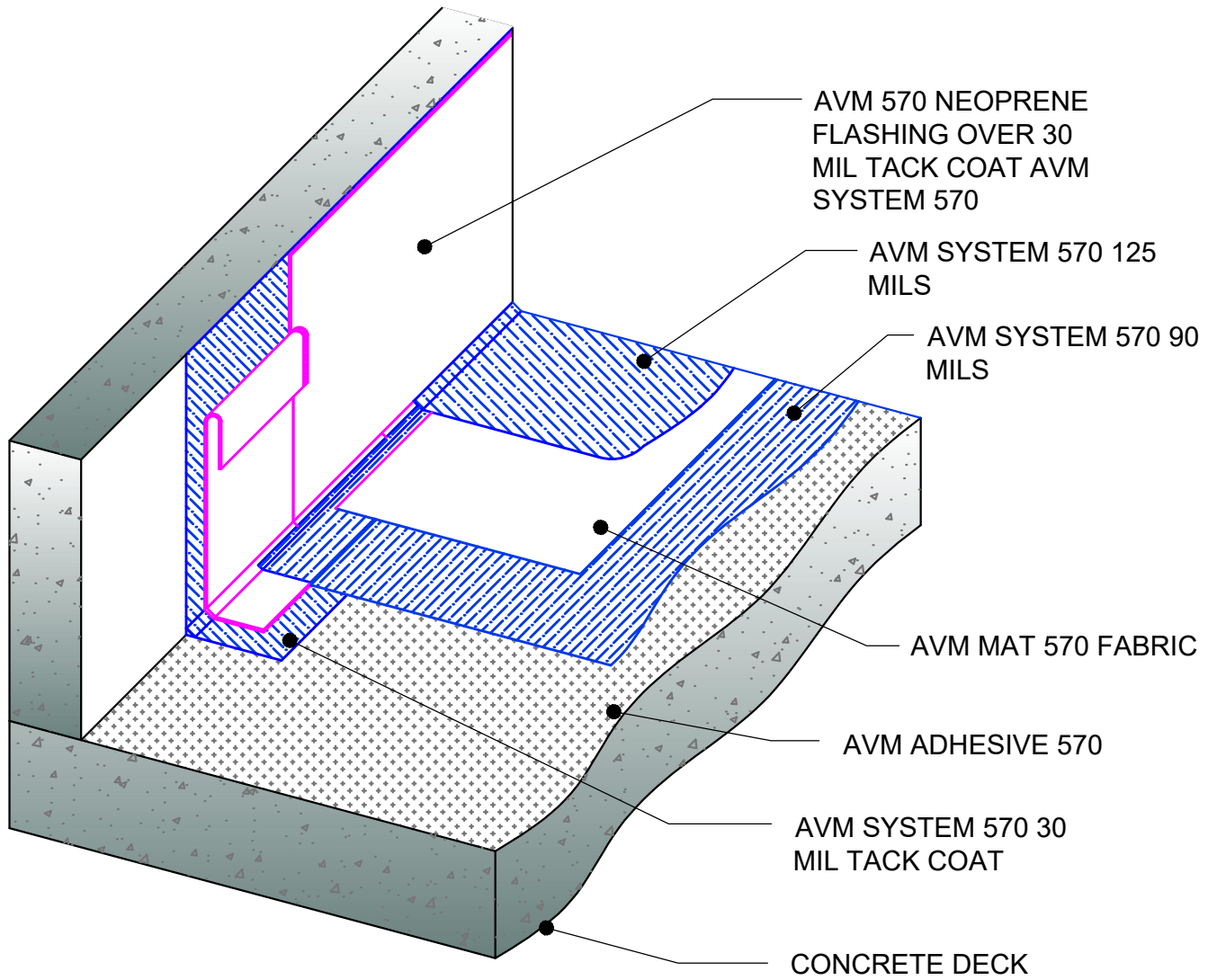
COMPLETELY COAT NEOPRENE FLASHING WITH AVM SYSTEM
570 90 MIL BASE COAT IMMEDIATELY AFTER INSTALLATION

DETAIL #: AVM-0570-4051

AVM SYSTEM 570

CONCRETE DECK

Fabric Reinforced System and
Neoprene flashing Details
AVM Aussie Membrane 570
Hot Rubber

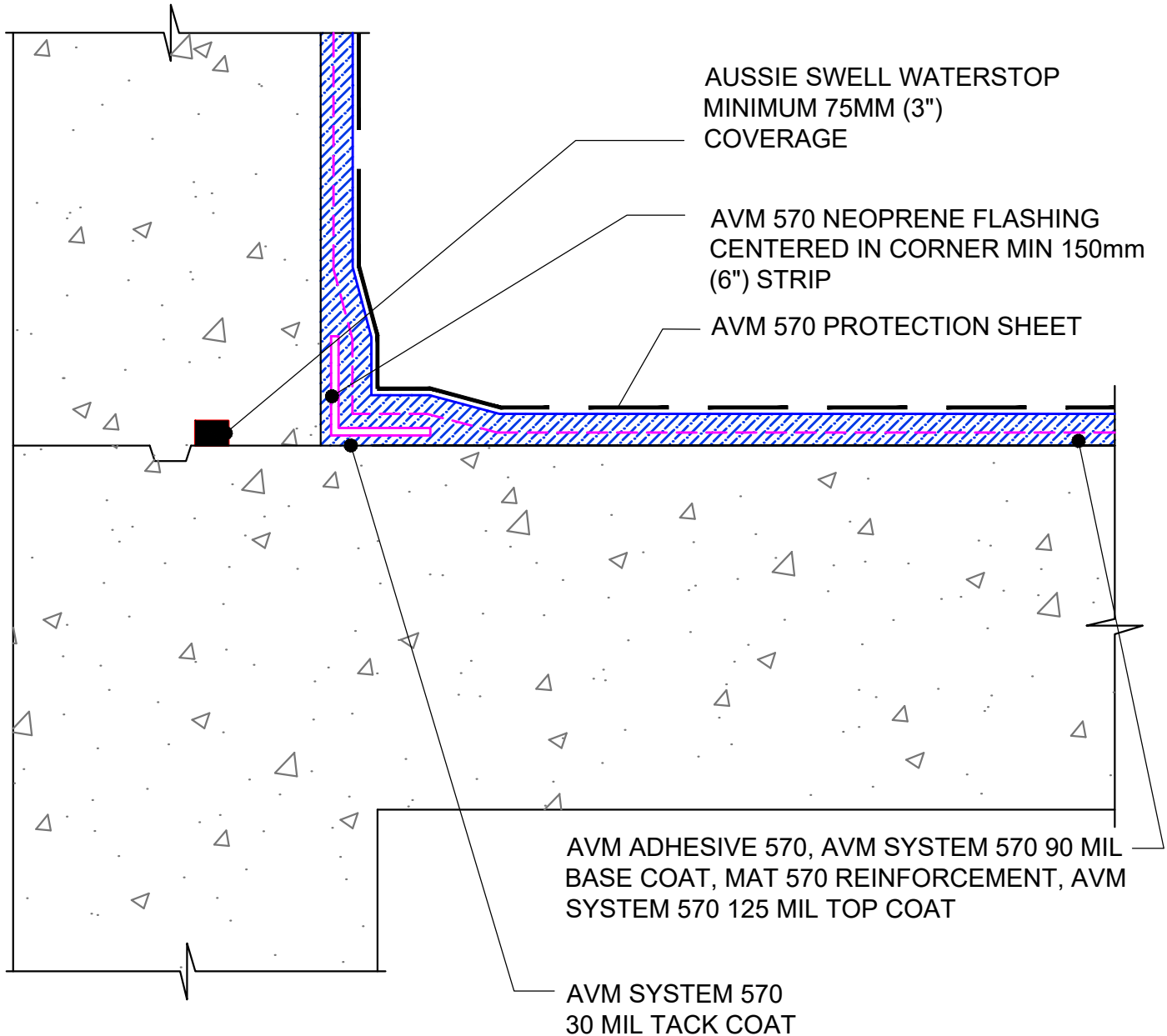


DETAIL #: AVM-0570-4201

AVM SYSTEM 570

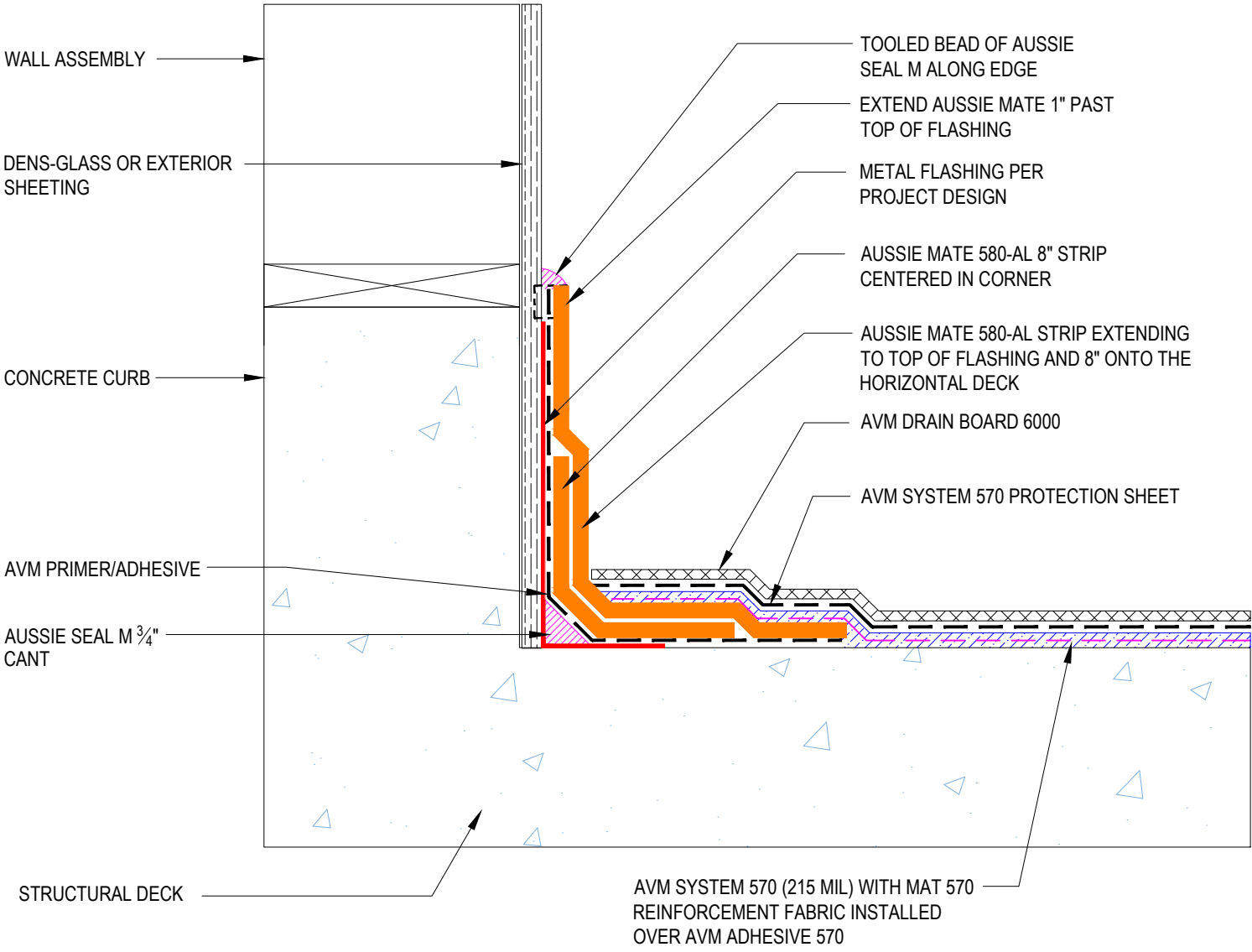
CONCRETE DECK

Reinforced Hot Rubber
at Cold Joints
AVM Membrane 570
Hot Rubber



DETAIL #:
0570-4210
 AVM System 570

Plaza Deck Corner Transition
Option 1
AVM System 570



DETAIL #: AVM-0570-4211
 AVM SYSTEM 570
CONCRETE DECK

Planter Overview
AVM Membrane 570
Hot Rubber

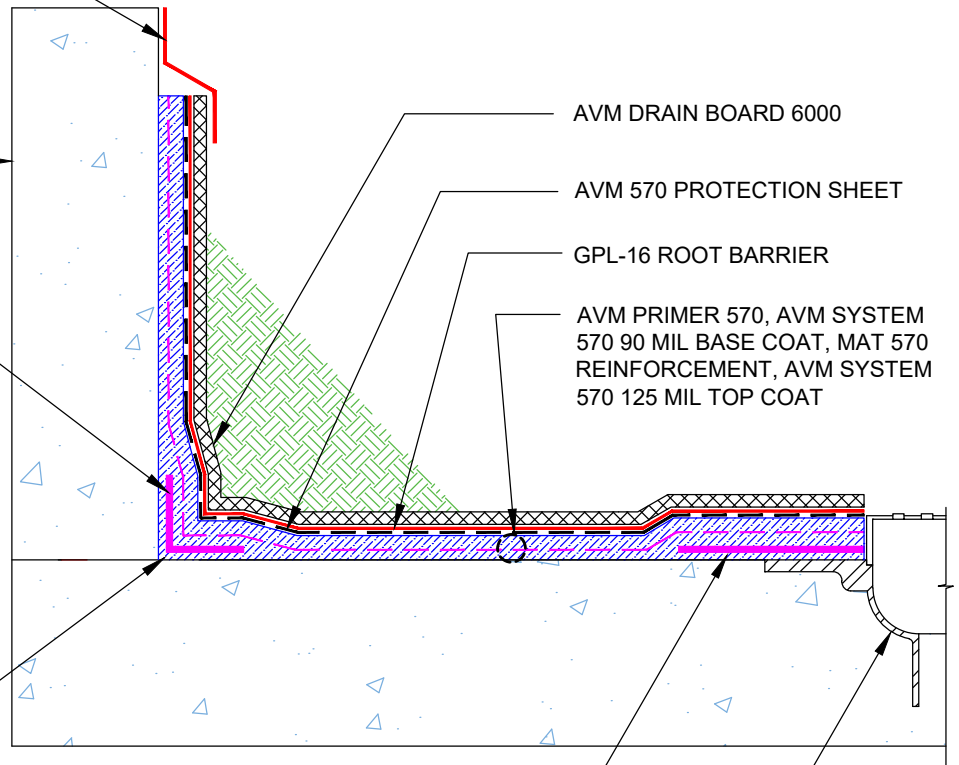


GRADE TERMINATION
 (SEE AVM DETAIL
 0570-6401 FOR OPTIONS)

PLANTER WALL

AVM 570 NEOPRENE FLASHING
 CENTERED IN CORNER MIN 6" STRIP

AVM 570 30 MIL TACK COAT



AVM DRAIN BOARD 6000

AVM 570 PROTECTION SHEET

GPL-16 ROOT BARRIER

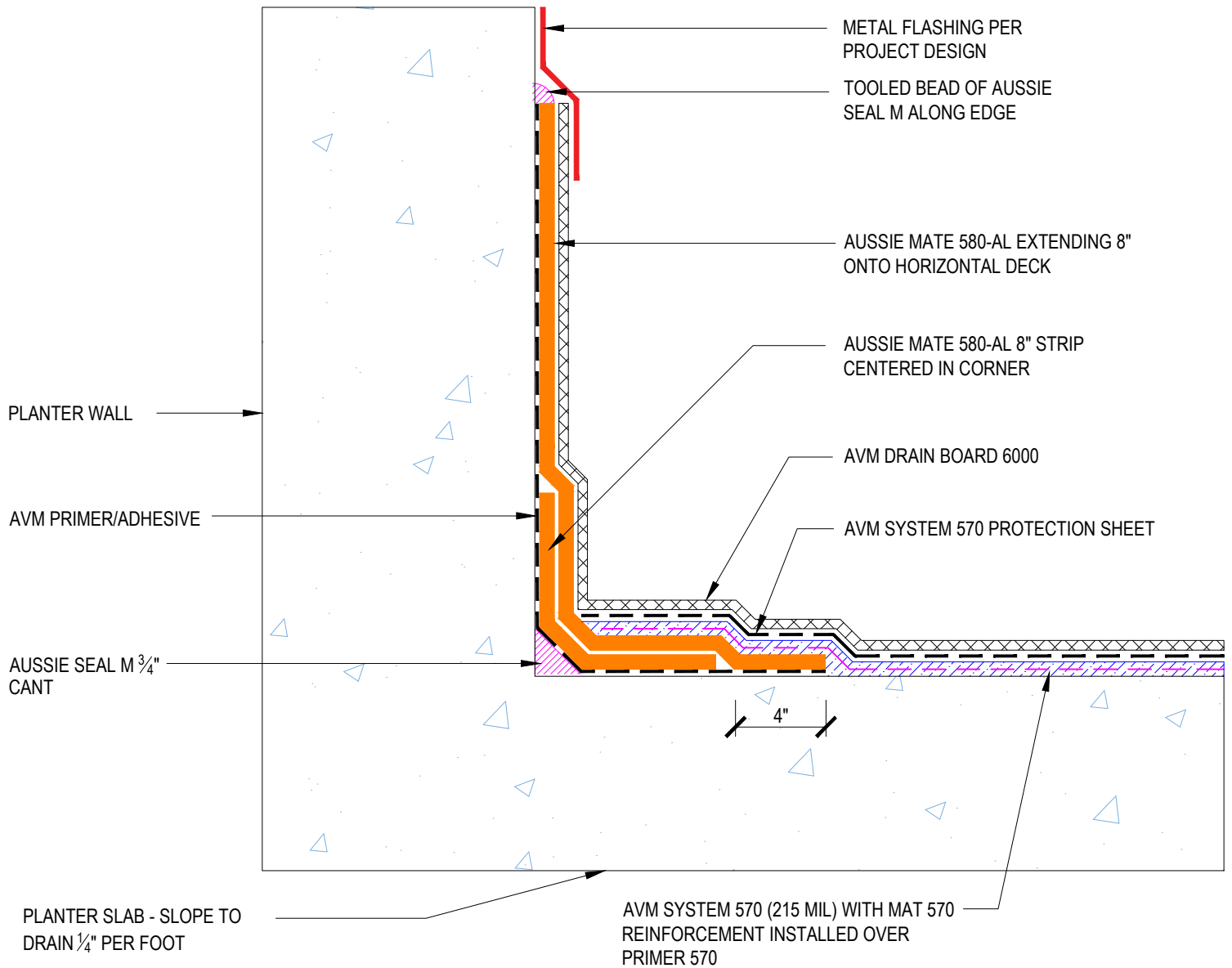
AVM PRIMER 570, AVM SYSTEM
 570 90 MIL BASE COAT, MAT 570
 REINFORCEMENT, AVM SYSTEM
 570 125 MIL TOP COAT

AVM 570 NEOPRENE
 FLASHING MIN 6" STRIP

DECK DRAIN

DETAIL #:
0570-4212
AVM System 570

Plaza Deck Corner Transition Option 2 AVM System 570

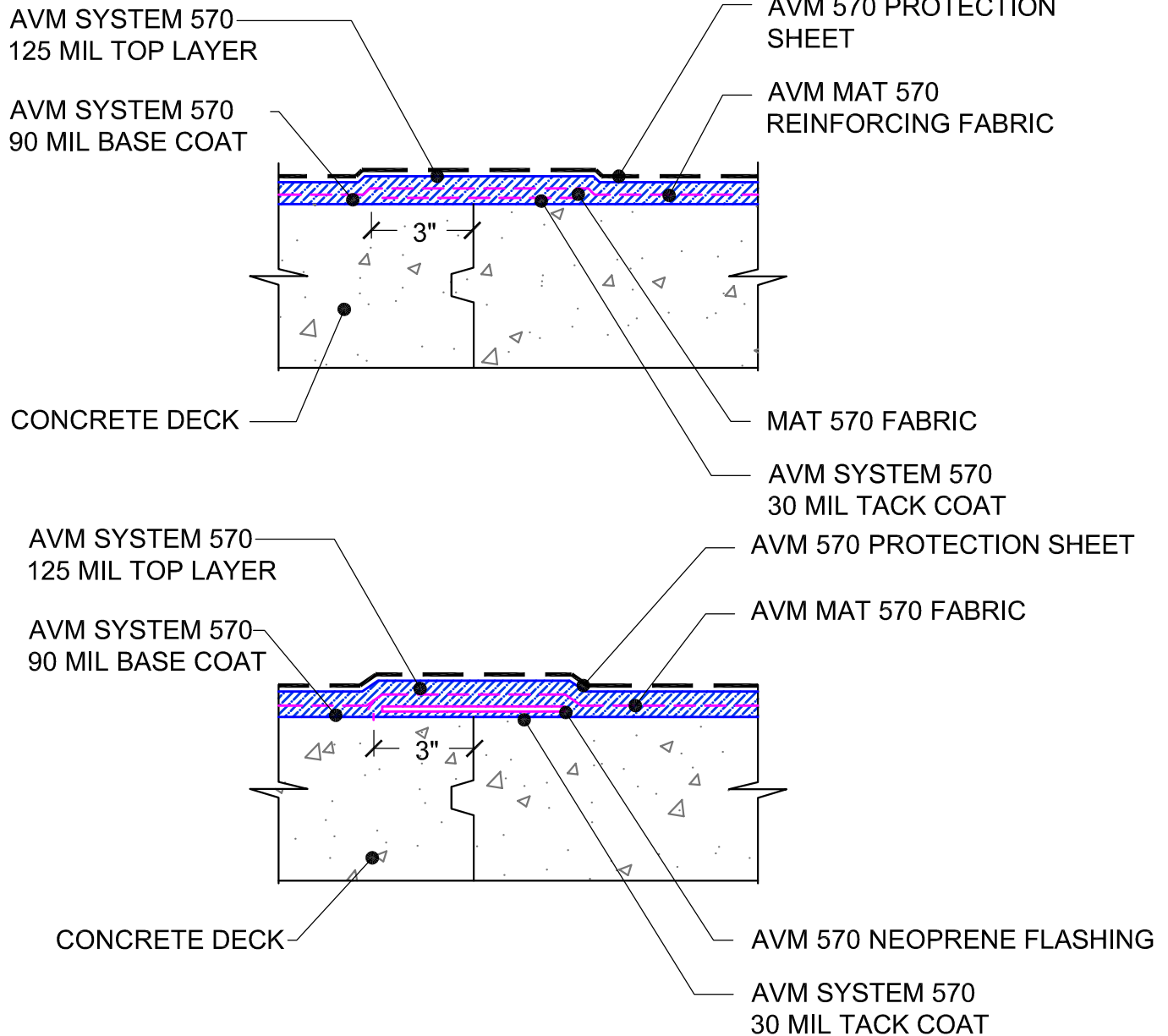


DETAIL #: AVM-0570-4220

AVM SYSTEM 570

CONCRETE DECK

Treatment of Construction Joints
AVM Aussie Membrane 570
Hot Rubber

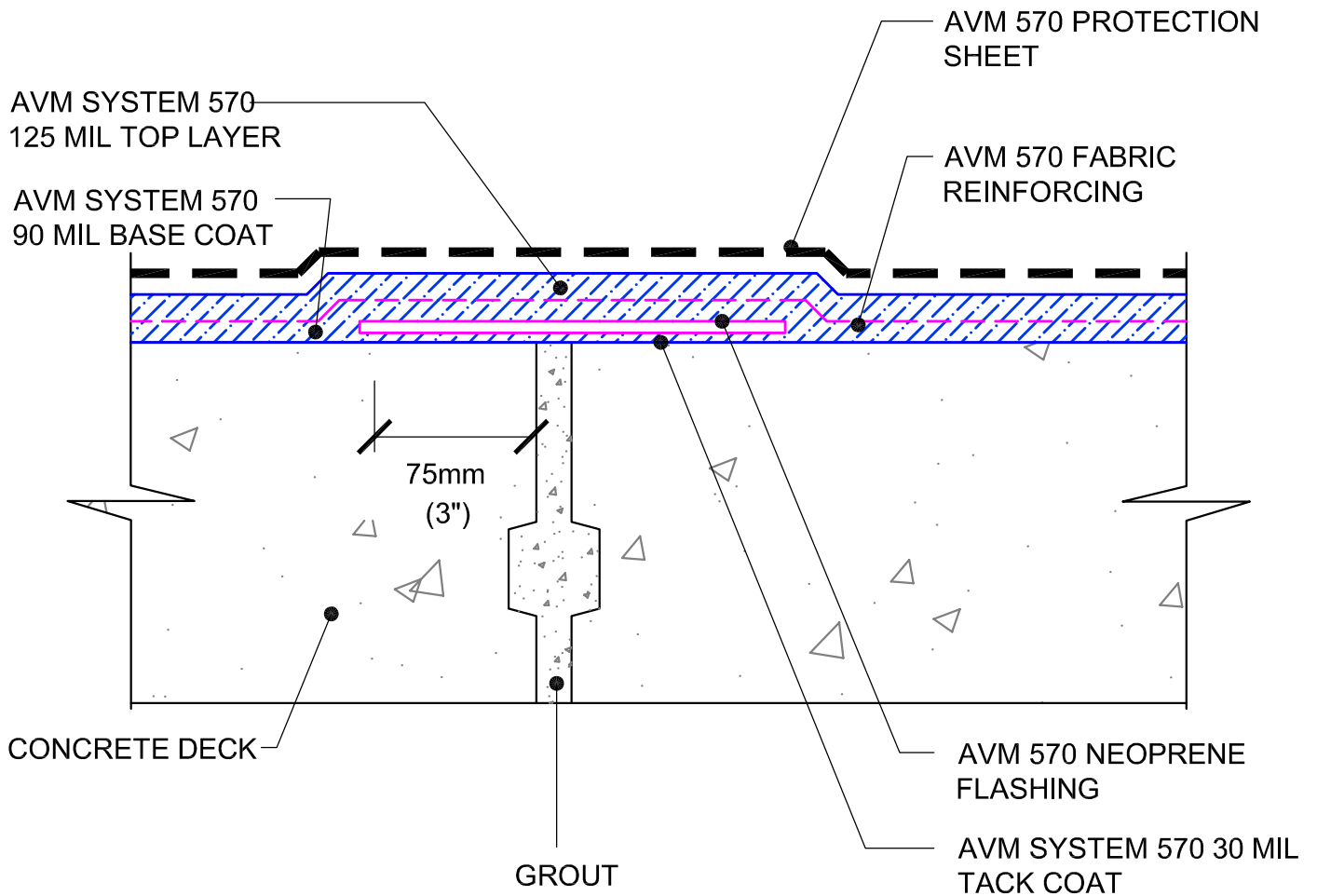


DETAIL #: AVM-0570-4230

AVM SYSTEM 570

CONCRETE DECK

Precast Joint Treatment
AVM Aussie Membrane 570
Hot Rubber

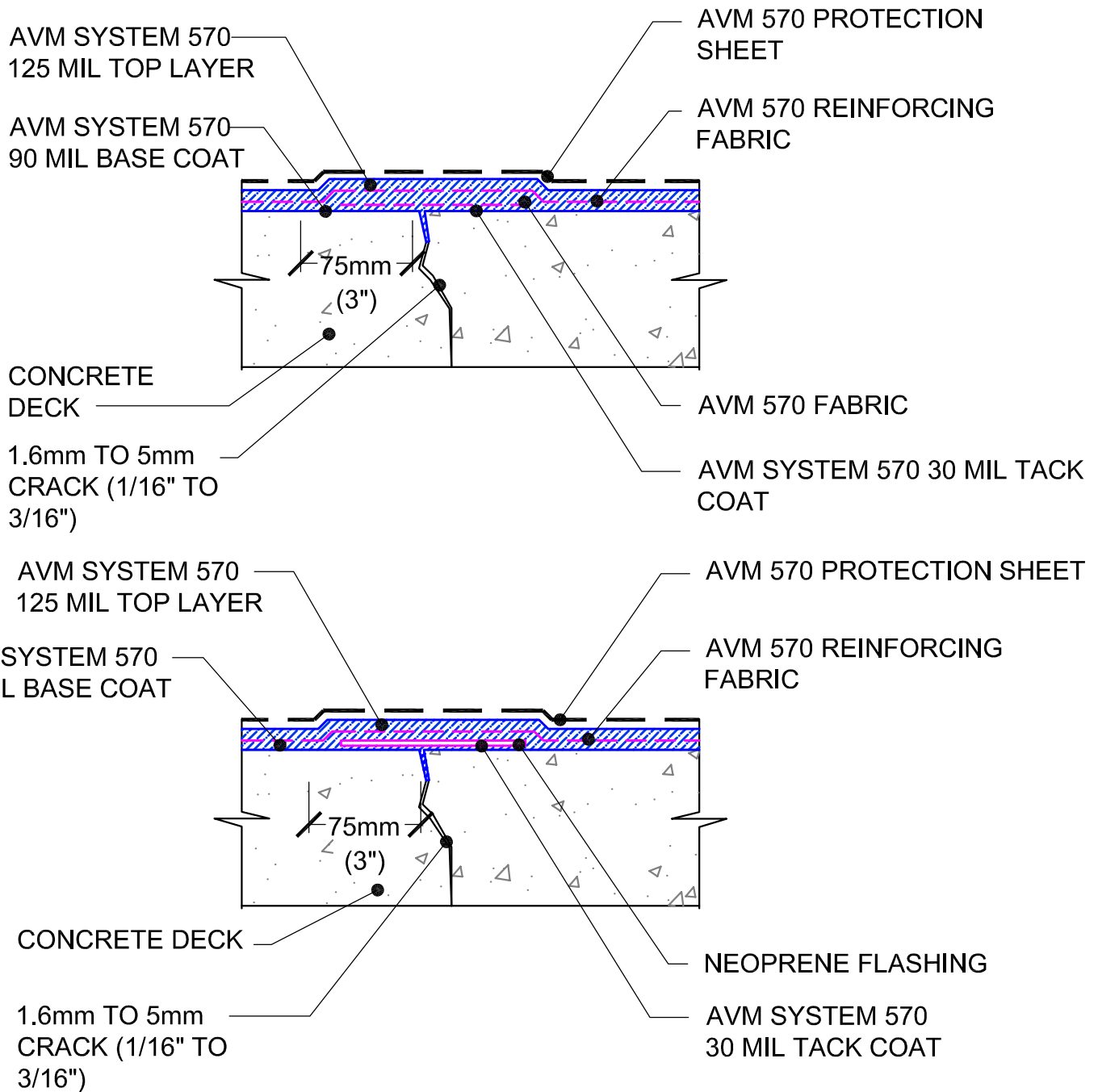


DETAIL #: AVM-0570-4401

AVM SYSTEM 570

CONCRETE DECK

Treatment of Cracks - 1/16" to 3/16"
AVM Aussie Membrane 570
Hot Rubber

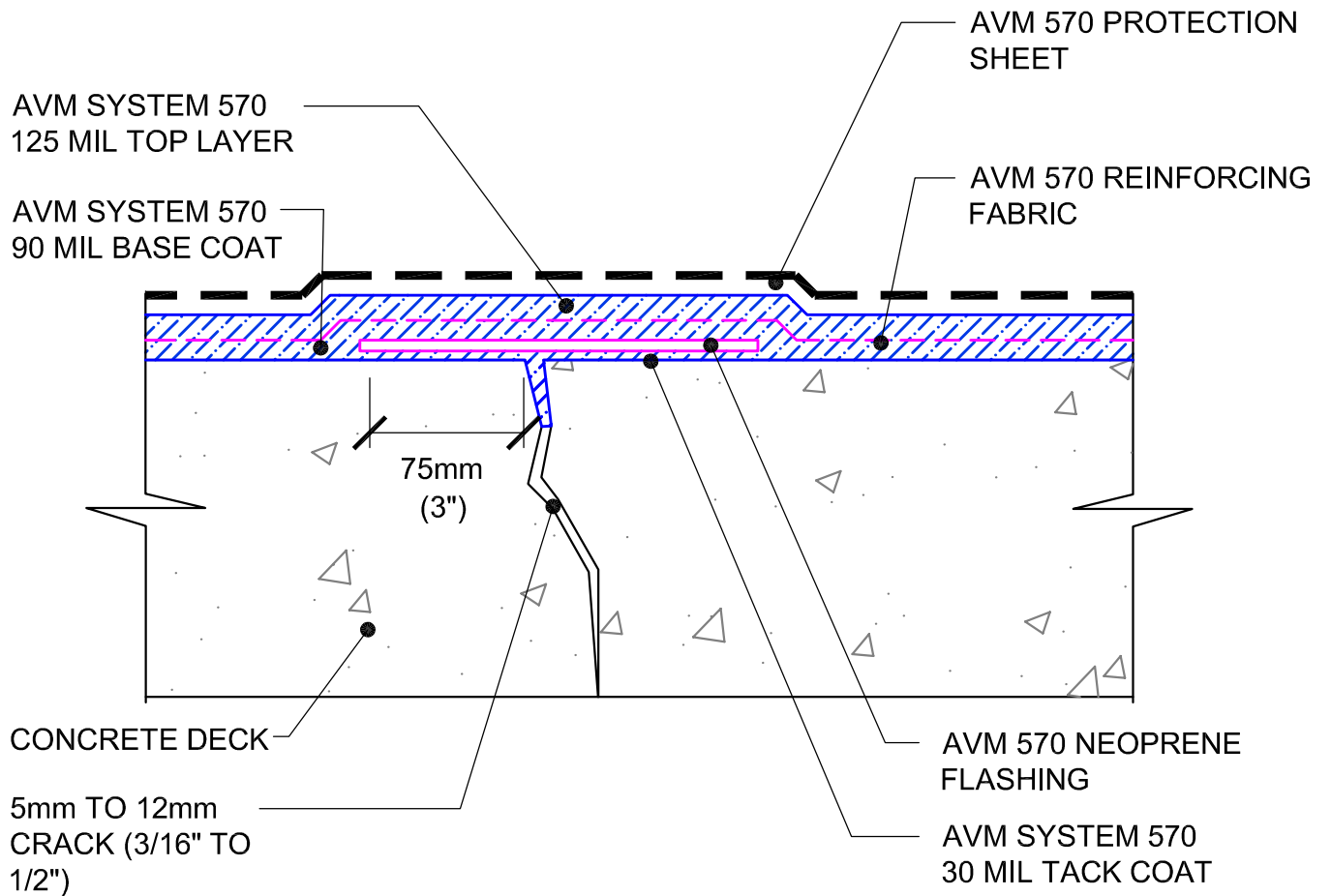


DETAIL #: AVM-0570-4420

AVM SYSTEM 570

CONCRETE DECK

Treatment of Cracks - 3/16" - 1/2"
AVM Aussie Membrane 570
Hot Rubber

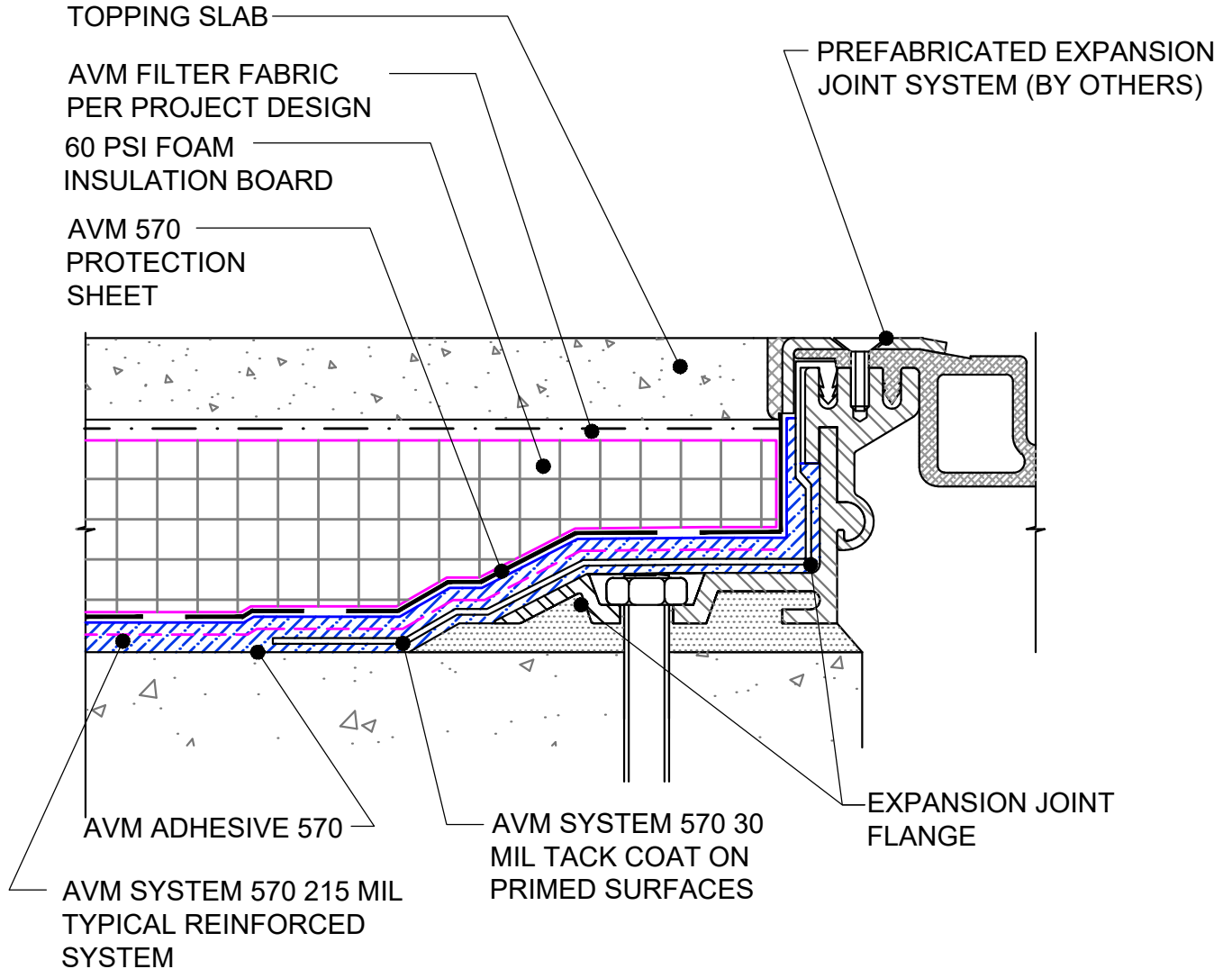


DETAIL #: AVM-0570-4601

AVM SYSTEM 570

CONCRETE DECK

Mid-Deck to Expansion Joint
Topping Slab
AVM Aussie Membrane 570
Hot Rubber



NOTE: AVM PRODUCTS ARE NOT DESIGNED TO WATERPROOF EXPANSION JOINTS. EXPANSION JOINTS REQUIRE A PROPER EXPANSION JOINT MATERIAL MANUFACTURED BY OTHERS. AVM PRODUCTS CAN BE INSTALLED OVER EXPANSION JOINT MATERIALS AS ILLUSTRATED ABOVE. CHECK WITH THE EXPANSION JOINT PRODUCT MANUFACTURER FOR MATERIAL COMPATIBILITY.

NOTE: CONSULT WITH THE EXPANSION JOINT MANUFACTURER FOR SPECIFIC INFORMATION ON THEIR PRODUCT AND INSTALLATION PROCEDURES

DETAIL #: AVM-0570-4651

AVM SYSTEM 570

CONCRETE DECK

Mid-Deck to Expansion Joint- Pavers
AVM Aussie Membrane 570
Hot Rubber

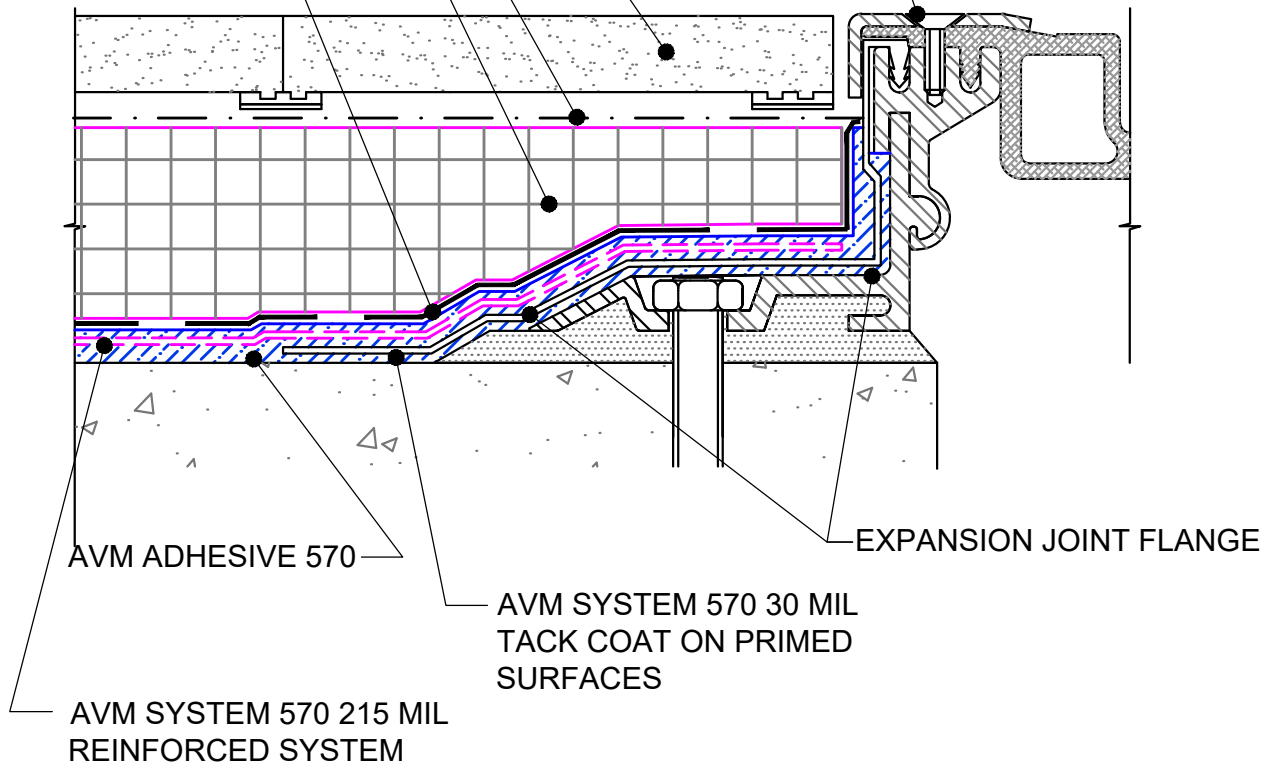


PEDESTAL AND PAVER
SYSTEM

AVM FILTER FABRIC PER
PROJECT DESIGN
60 PSI FOAM INSULATION
BOARD BOARD

AVM 570
PROTECTION
SHEET

PREFABRICATED
EXPANSION JOINT SYSTEM
(BY OTHERS)



NOTE: AVM PRODUCTS ARE NOT DESIGNED TO WATERPROOF EXPANSION JOINTS. EXPANSION JOINTS REQUIRE A PROPER EXPANSION JOINT MATERIAL MANUFACTURED BY OTHERS. AVM PRODUCTS CAN BE INSTALLED OVER EXPANSION JOINT MATERIALS AS ILLUSTRATED ABOVE. CHECK WITH THE EXPANSION JOINT PRODUCT MANUFACTURER FOR MATERIAL COMPATIBILITY.

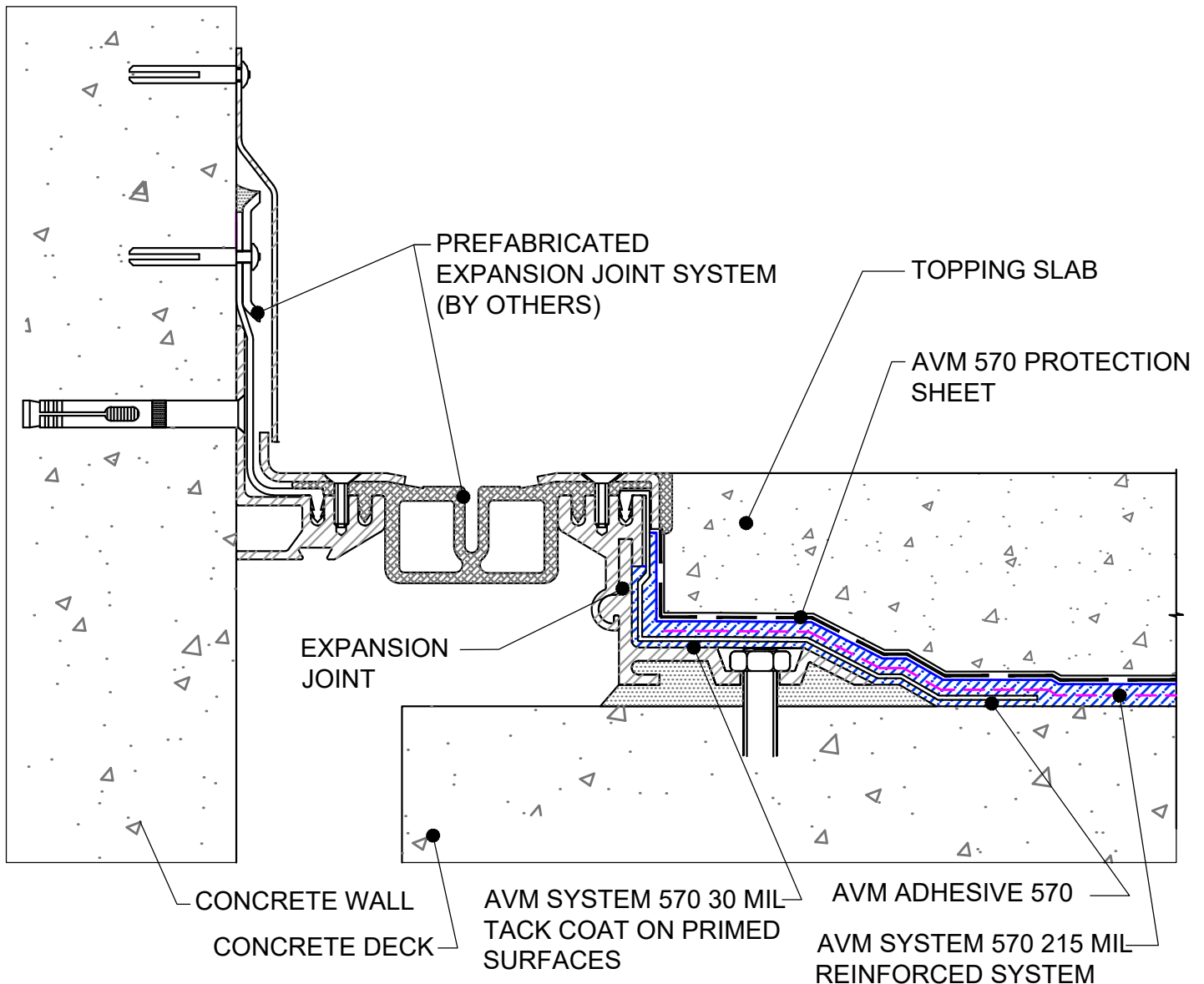
**NOTE: CONSULT WITH THE EXPANSION JOINT
MANUFACTURER FOR SPECIFIC INFORMATION ON THEIR
PRODUCT AND INSTALLATION PROCEDURES**

DETAIL #: AVM-0570-4701

AVM SYSTEM 570

CONCRETE DECK

Deck to Wall Expansion Joint
AVM Aussie Membrane 570
Hot Rubber



NOTE: AVM PRODUCTS ARE NOT DESIGNED TO WATERPROOF EXPANSION JOINTS. EXPANSION JOINTS REQUIRE A PROPER EXPANSION JOINT MATERIAL MANUFACTURED BY OTHERS. AVM PRODUCTS CAN BE INSTALLED OVER EXPANSION JOINT MATERIALS AS ILLUSTRATED ABOVE. CHECK WITH THE EXPANSION JOINT PRODUCT MANUFACTURER FOR MATERIAL COMPATIBILITY.

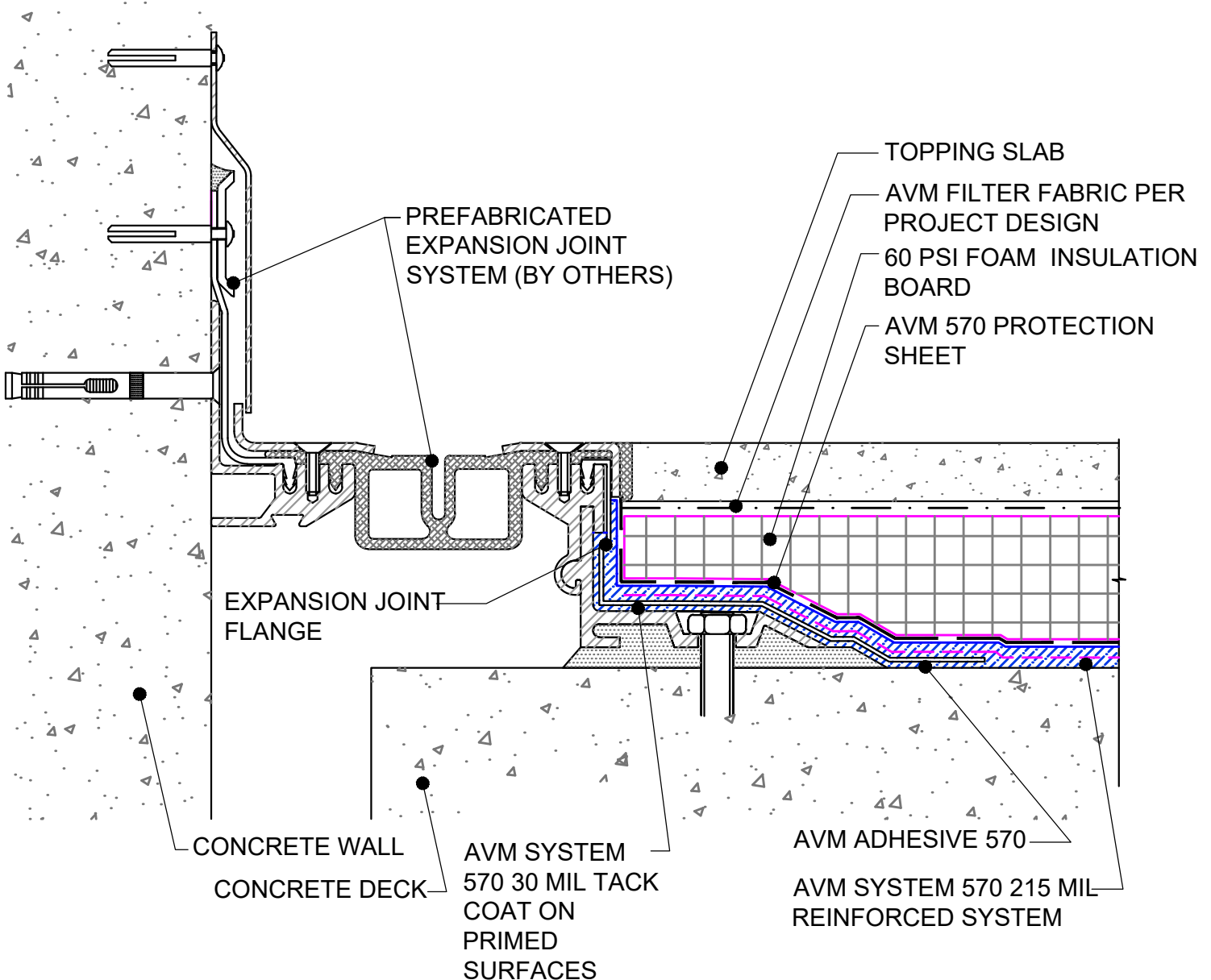
NOTE: CONSULT WITH THE EXPANSION JOINT MANUFACTURER FOR SPECIFIC INFORMATION ON THEIR PRODUCT AND INSTALLATION PROCEDURES

DETAIL #: AVM-0570-4751

AVM SYSTEM 570

CONCRETE DECK

Deck to Wall Expansion Joint
with Insulation
AVM Aussie Membrane 570
Hot Rubber



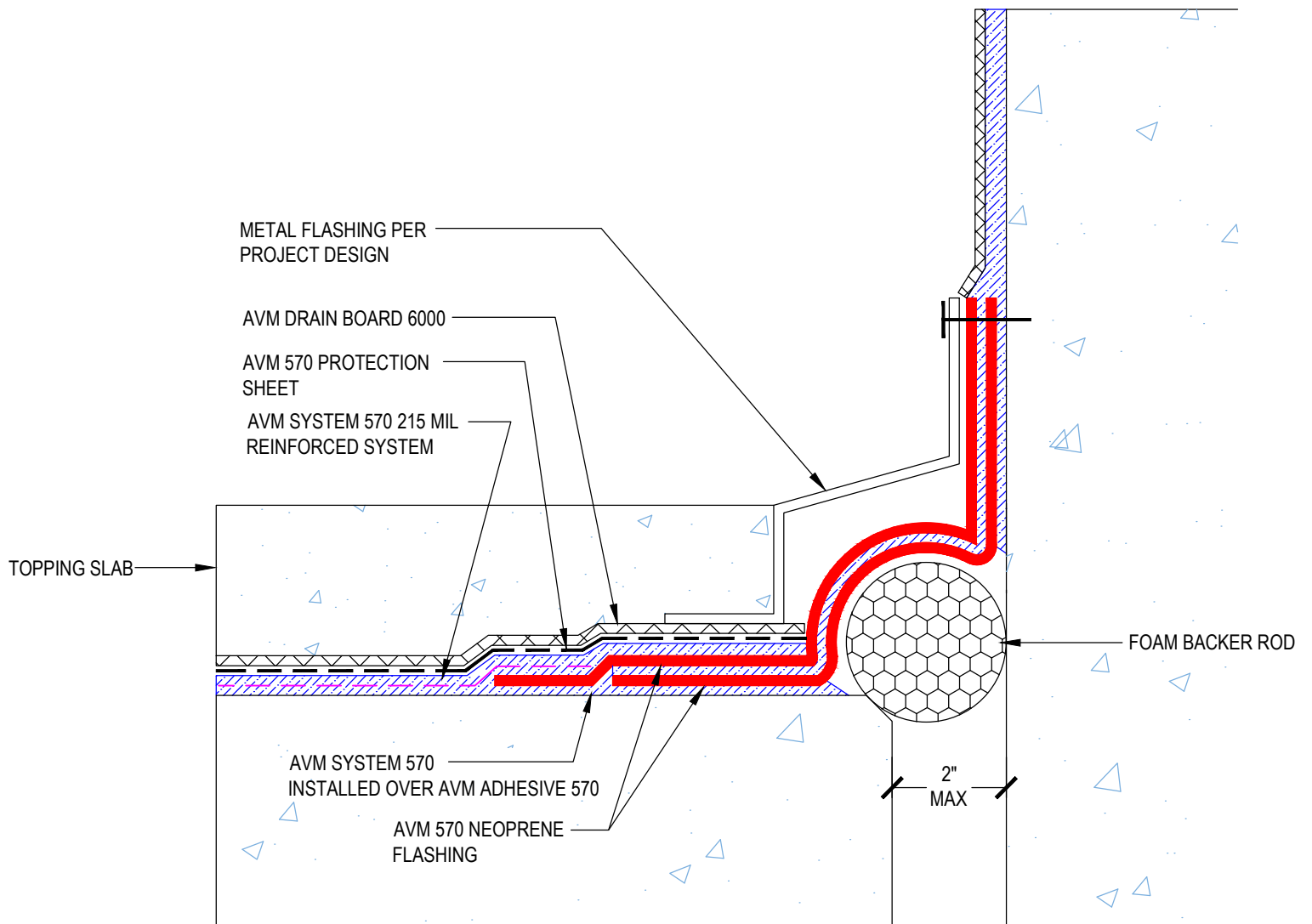
NOTE: AVM PRODUCTS ARE NOT DESIGNED TO WATERPROOF EXPANSION JOINTS. EXPANSION JOINTS REQUIRE A PROPER EXPANSION JOINT MATERIAL MANUFACTURED BY OTHERS. AVM PRODUCTS CAN BE INSTALLED OVER EXPANSION JOINT MATERIALS AS ILLUSTRATED ABOVE. CHECK WITH THE EXPANSION JOINT PRODUCT MANUFACTURER FOR MATERIAL COMPATIBILITY.

NOTE: CONSULT WITH THE EXPANSION JOINT MANUFACTURER FOR SPECIFIC INFORMATION ON THEIR PRODUCT AND INSTALLATION PROCEDURES

DETAIL #:
0570-4761
AVM System 570

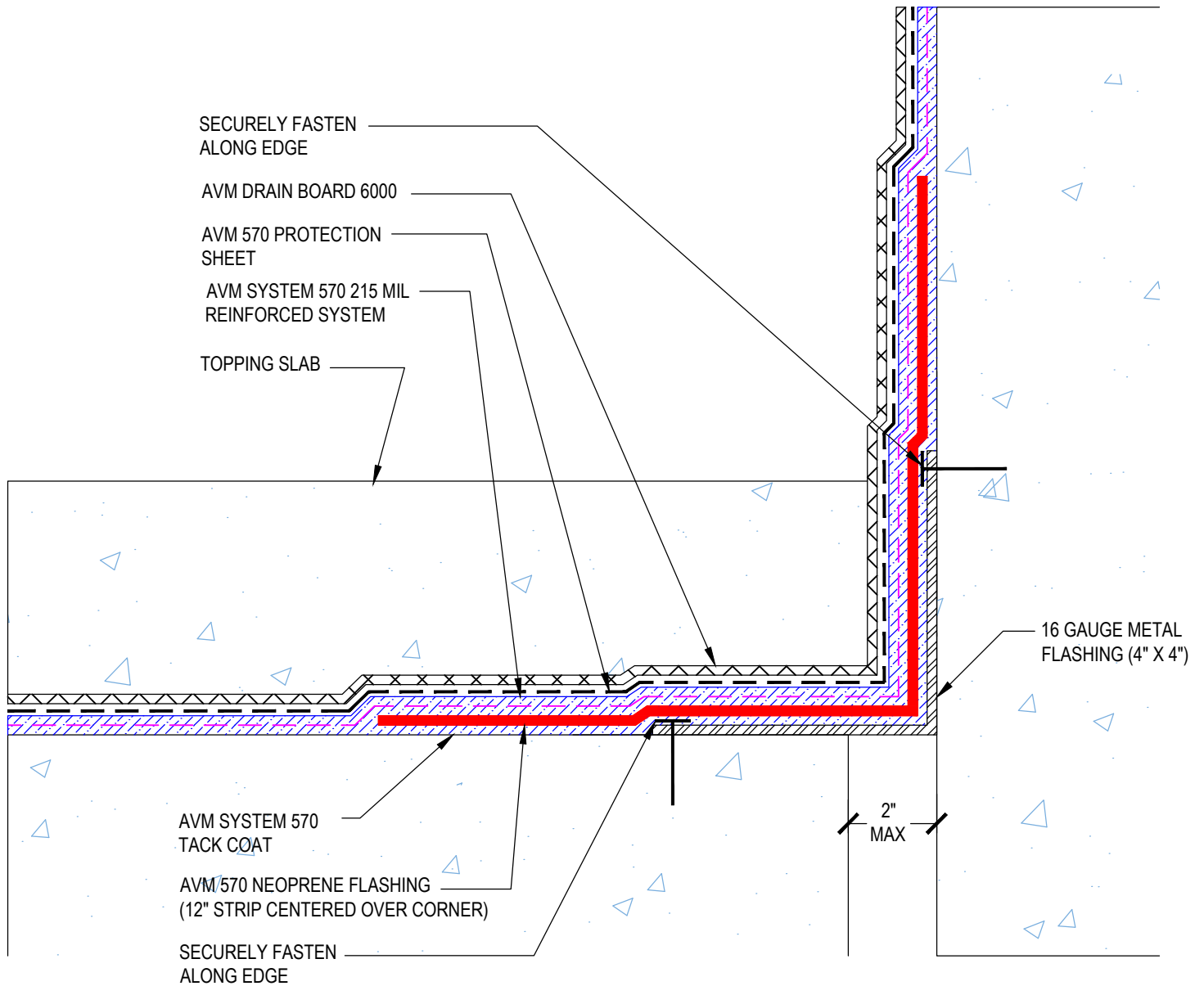
Deck to Wall Expansion Joint

AVM System 570



DETAIL #:
0570-4765
AVM System 570

Deck to Wall Transition with Metal Flashing (Non-Moving Joint) AVM System 570

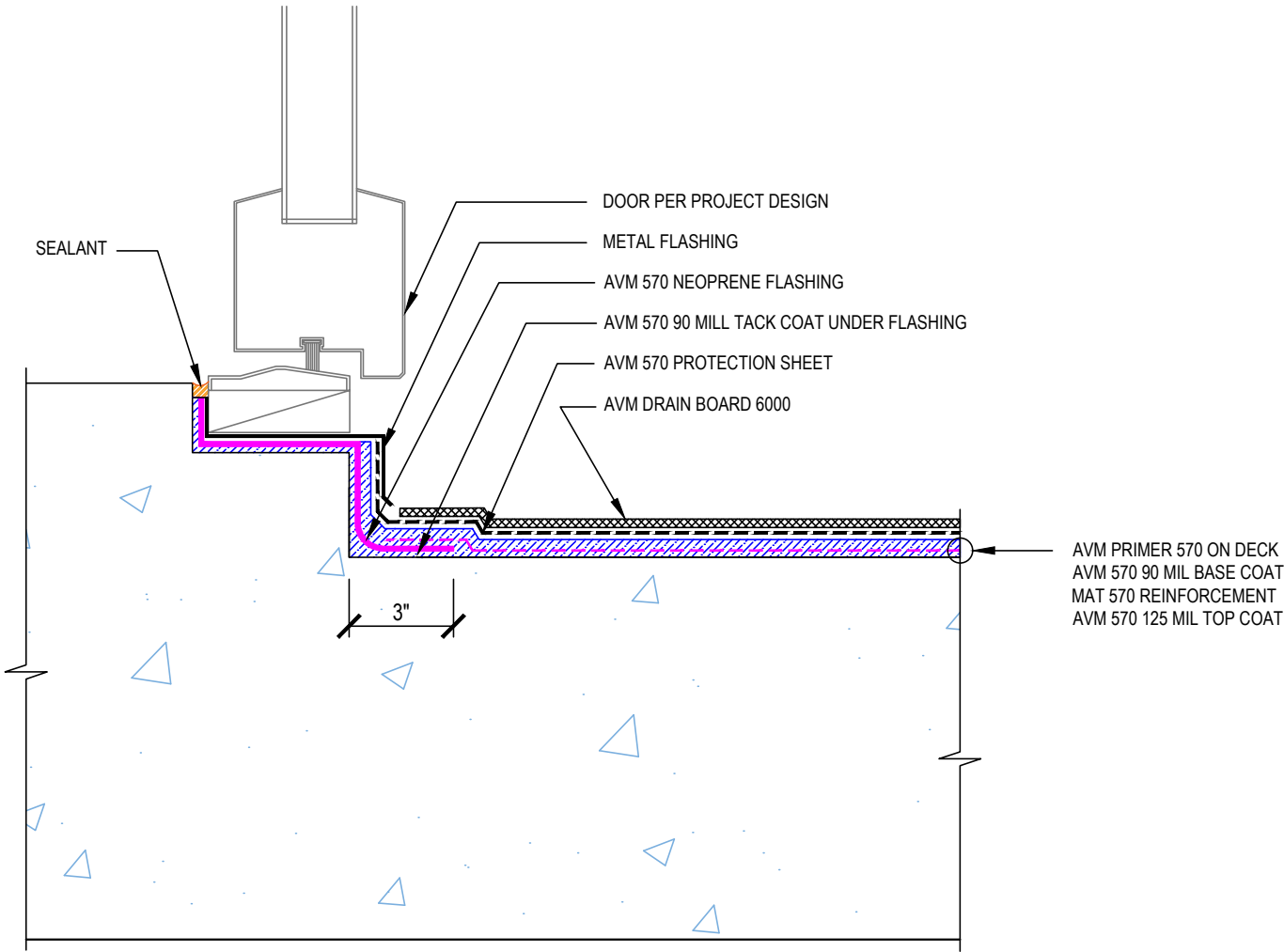


USE AVM ADHESIVE 570 ON CONCRETE RECEIVING AVM SYSTEM 570

DETAIL #:
0570-4800
AVM System 570

Door Threshold

AVM System 570 Hot Rubber



Notes:

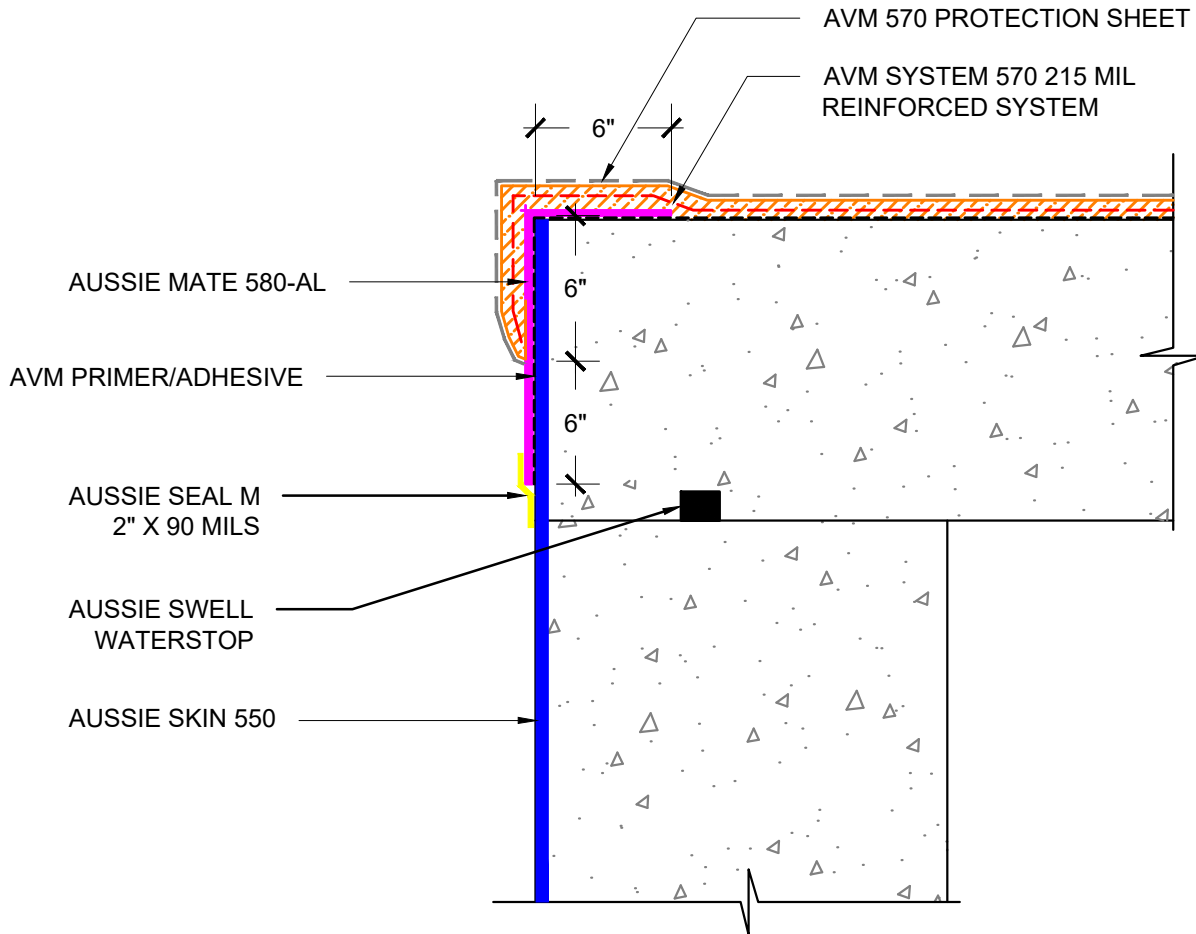
- 1. Aussie Membrane 570 is a Hot Rubber(Hot-Applied Asphalt-Based Composition Membrane) for Between-Slabs, Planters, Roof-Gardens and similar type Waterproofing.
- 2. Typical membrane is 215 mils thick with fabric reinforcement. If specified differently, contact AVM for approval.
- 3. Contact AVM if no drain board or protection board is specified.
- 4. Remove/grind/repair as necessary any protrusions, sharp edges, etc that may puncture or damage the membrane.
- 5. Substrates must be sloped to drains and/or edges before membrane installation. (Min 1/4" per foot) Substrates must have sufficient drains and proper drainage systems to effectively evacuate excessive water.

DETAIL #: AVM-0570-5001

AVM SYSTEM 570

TYPICAL PLAZA

Vertical Transition to Aussie Skin
AVM Aussie Membrane 570
Hot Rubber



USE AVM ADHESIVE 570 ON CONCRETE RECEIVING AVM SYSTEM 570

NOTES:

1. Aussie Membrane 570 is a Hot Rubber(Hot-Applied Asphalt-Based Composition Membrane) for Between-Slabs, Planters, Roof-Gardens and similar type Waterproofing.
2. Typical membrane is 215 mils thick with fabric reinforcement. If specified differently, contact AVM for approval.
3. Contact AVM if no drain board or protection board is specified.
4. Remove/grind/repair as necessary any protrusions, sharp edges, etc that may puncture or damage the membrane.
5. Deck-to-Wall corners must be waterproofed as shown on AVM's Details.
6. Substrates must be sloped to drains and/or edges before membrane installation. (Min 1/4" per foot) Substrates must have sufficient drains and proper drainage systems to effectively evacuate excessive water.
7. If water is to drain over the edge, then edge metals MUST have sufficient weep holes (at least every 6") and must be strong enough (thick enough) to act as a concrete form.
8. Many edge details are possible. All must allow for proper water evacuation. (None should trap water) Consult AVM for details.
9. Drainage board for topping Slabs up to 4" thick for pedestrian applications: Use AVM Drain Board 6000.
10. Drainage board for topping slabs over 4" thick or for vehicular applications:Use AVM Drain Board 9000.

AVM Industries, Inc.
8245 Remmet Ave, Canoga Park, CA 91304

Quality Waterproofing Products

888.414.1041 818.888.0050
www.avmindustries.com

FILE NAME: **0570-5001-Vertical-Transition-to-Aussie-Skin**
Protected by Copyright - AVM Industries, Inc.

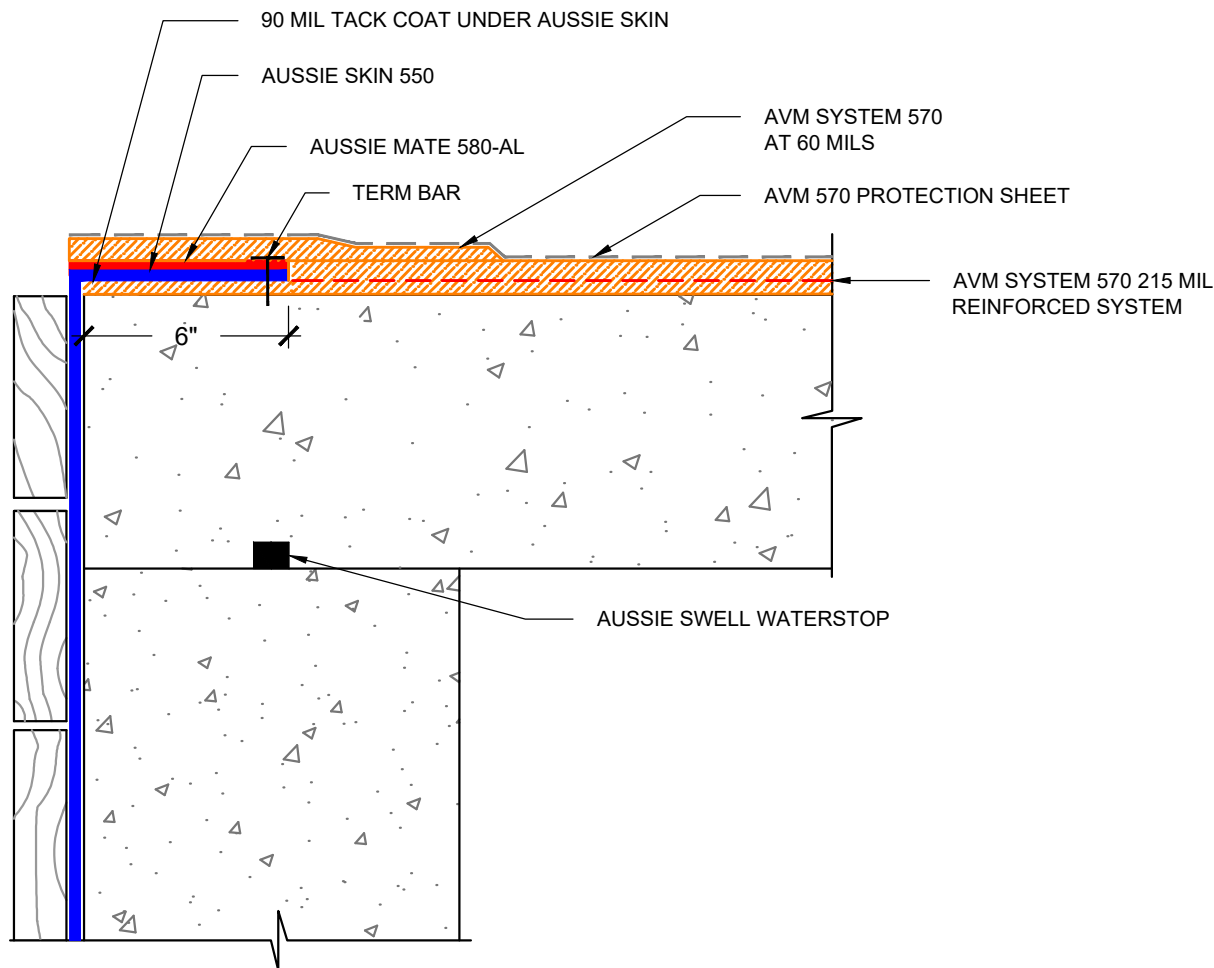
Revision Date 4/29/2024

DETAIL #: AVM-0570-5002

AVM SYSTEM 570

TYPICAL PLAZA

Horizontal Transition to Aussie Skin
AVM Aussie Membrane 570
Hot Rubber



USE AVM ADHESIVE 570 ON CONCRETE RECEIVING AVM SYSTEM 570

NOTES:

1. Aussie Membrane 570 is a Hot Rubber(Hot-Applied Asphalt-Based Composition Membrane) for Between-Slabs, Planters, Roof-Gardens and similar type Waterproofing.
2. Typical membrane is 215 mils thick with fabric reinforcement. If specified differently, contact AVM for approval.
3. Contact AVM if no drain board or protection board is specified.
4. Remove/grind/repair as necessary any protrusions, sharp edges, etc that may puncture or damage the membrane.
5. Deck-to-Wall corners must be waterproofed as shown on AVM's Details.
6. Substrates must be sloped to drains and/or edges before membrane installation. (Min 1/4" per foot) Substrates must have sufficient drains and proper drainage systems to effectively evacuate excessive water.
7. If water is to drain over the edge, then edge metals **MUST** have sufficient weep holes (at least every 6") and must be strong enough (thick enough) to act as a concrete form.
8. Many edge details are possible. All must allow for proper water evacuation. (None should trap water) Consult AVM for details.
9. Drainage board for topping Slabs up to 4" thick for pedestrian applications: Use AVM Drain Board 6000.
10. Drainage board for topping slabs over 4" thick or for vehicular applications:Use AVM Drain Board 9000.

AVM Industries, Inc.
8245 Remmet Ave, Canoga Park, CA 91304

Quality Waterproofing Products

888.414.1041 818.888.0050
www.avmindustries.com

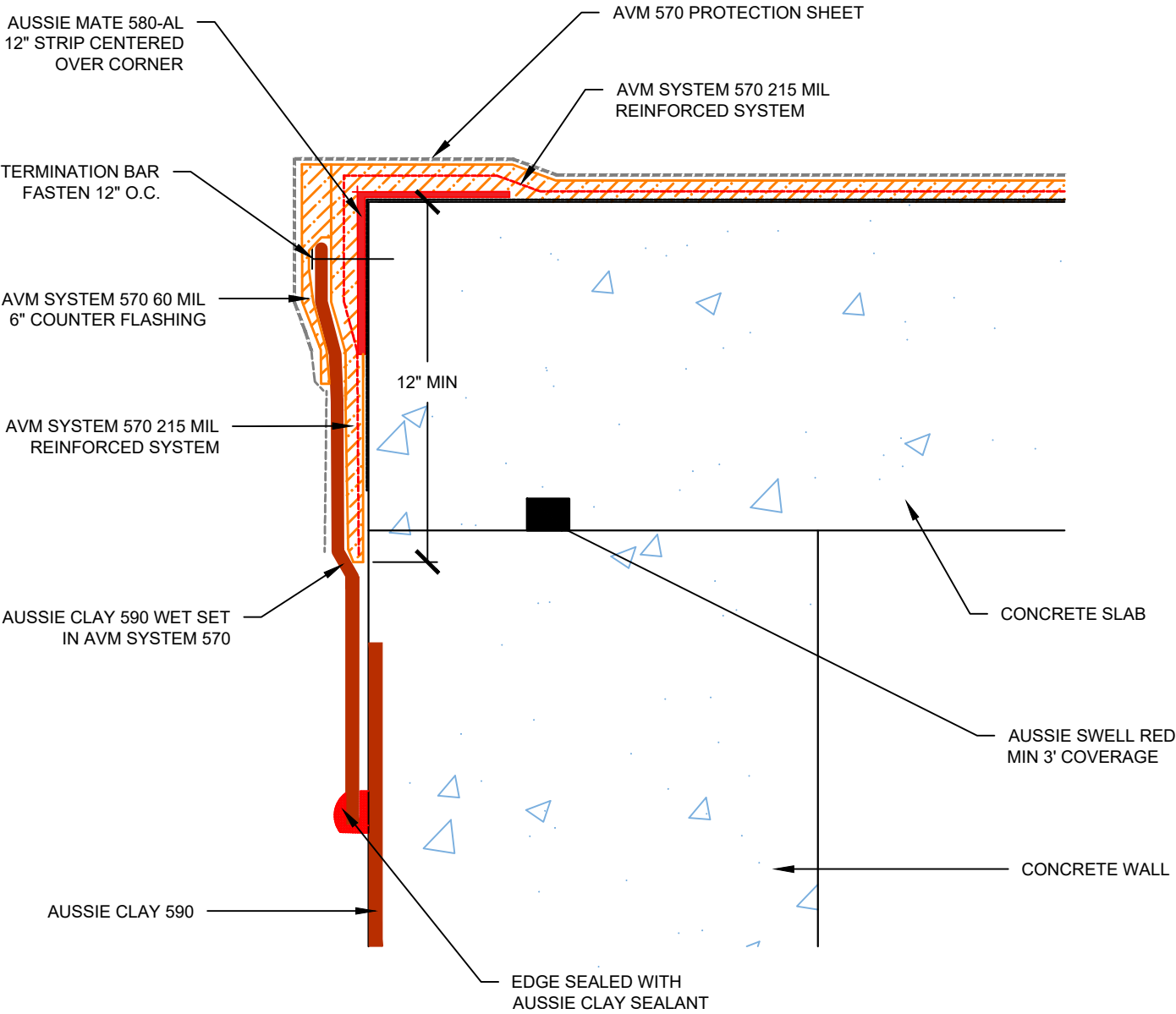
FILE NAME: **0570-5002-Horizontal-Transition-to-Aussie-Skin**
Protected by Copyright - AVM Industries, Inc.

Revision Date 3/5/2019

DETAIL #:
0570-5010
AVM SYSTEM 570

Vertical Transition AVM System 570 to Aussie Clay 590

AVM System 570 Hot Rubber



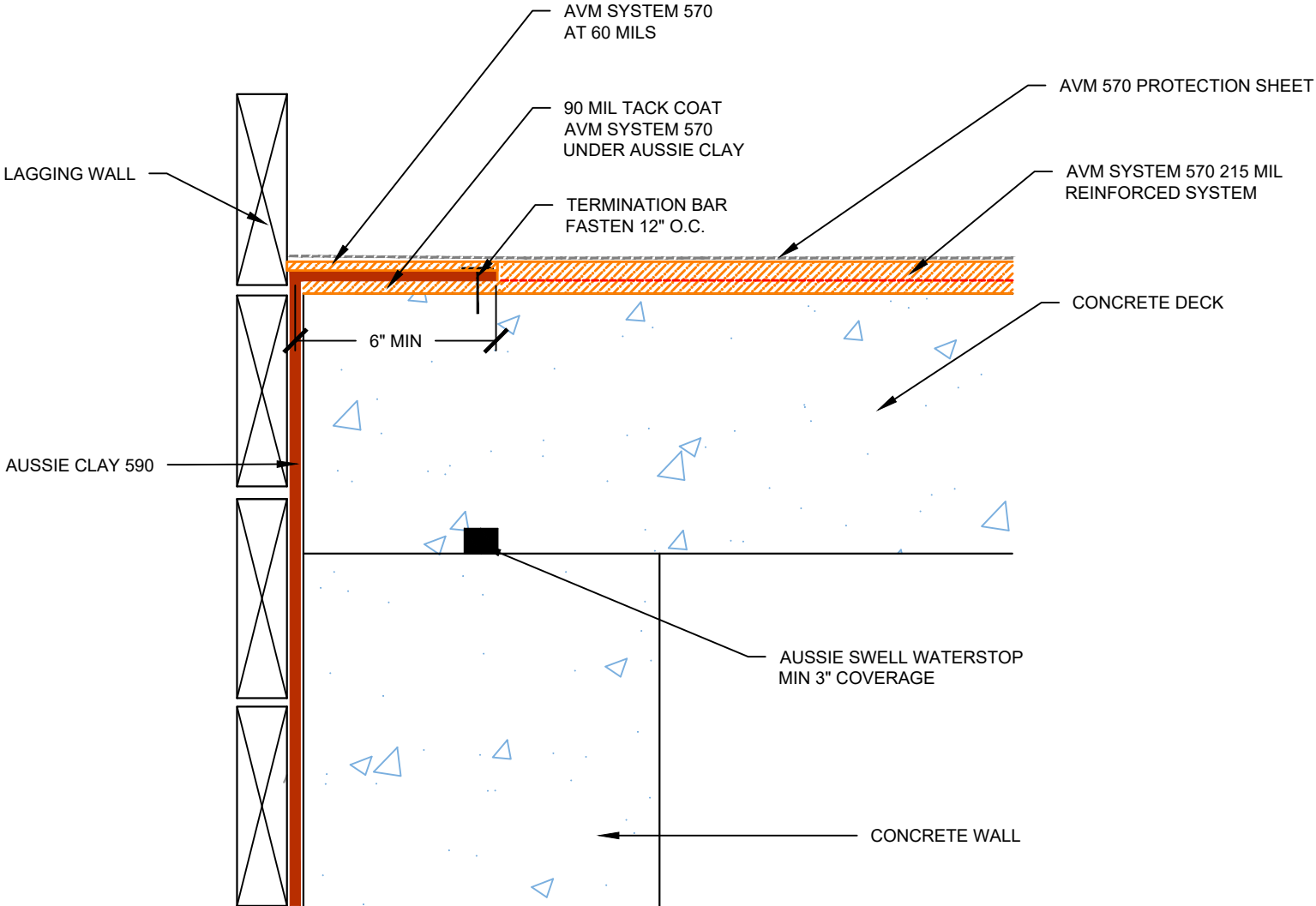
USE AVM PRIMER 570 ON CONCRETE RECEIVING AVM SYSTEM 570

- Notes:**
1. Aussie Membrane 570 is a Hot Rubber(Hot-Applied Asphalt-Based Composition Membrane) for Between-Slabs, Planters, Roof-Gardens and similar type Waterproofing.
 2. Typical membrane is 215 mils thick with fabric reinforcement. If specified differently, contact AVM for approval.
 3. Contact AVM if no drain board or protection board is specified.
 4. Remove/grind/repair as necessary any protrusions, sharp edges, etc that may puncture or damage the membrane.
 5. Deck-to-Wall corners must be waterproofed as shown on AVM's Details.
 6. Substrates must be sloped to drains and/or edges before membrane installation. (Min 1/4" per foot) Substrates must have sufficient drains and proper drainage systems to effectively evacuate excessive water.
 7. If water is to drain over the edge, then edge metals **MUST** have sufficient weep holes (at least every 6") and must be strong enough (thick enough) to act as a concrete form.
 8. Many edge details are possible. All must allow for proper water evacuation. (None should trap water) Consult AVM for details.
 9. Drainage board for topping Slabs up to 4" thick for pedestrian applications: Use AVM Drain Board 6000.
 10. Drainage board for topping slabs over 4" thick or for vehicular applications: Use AVM Drain Board 9000.

DETAIL #:
0570-5012
AVM System 570

Horizontal Transition to Aussie Clay

AVM System 570 Hot Rubber



USE AVM PRIMER 570 ON CONCRETE RECEIVING AVM SYSTEM 570

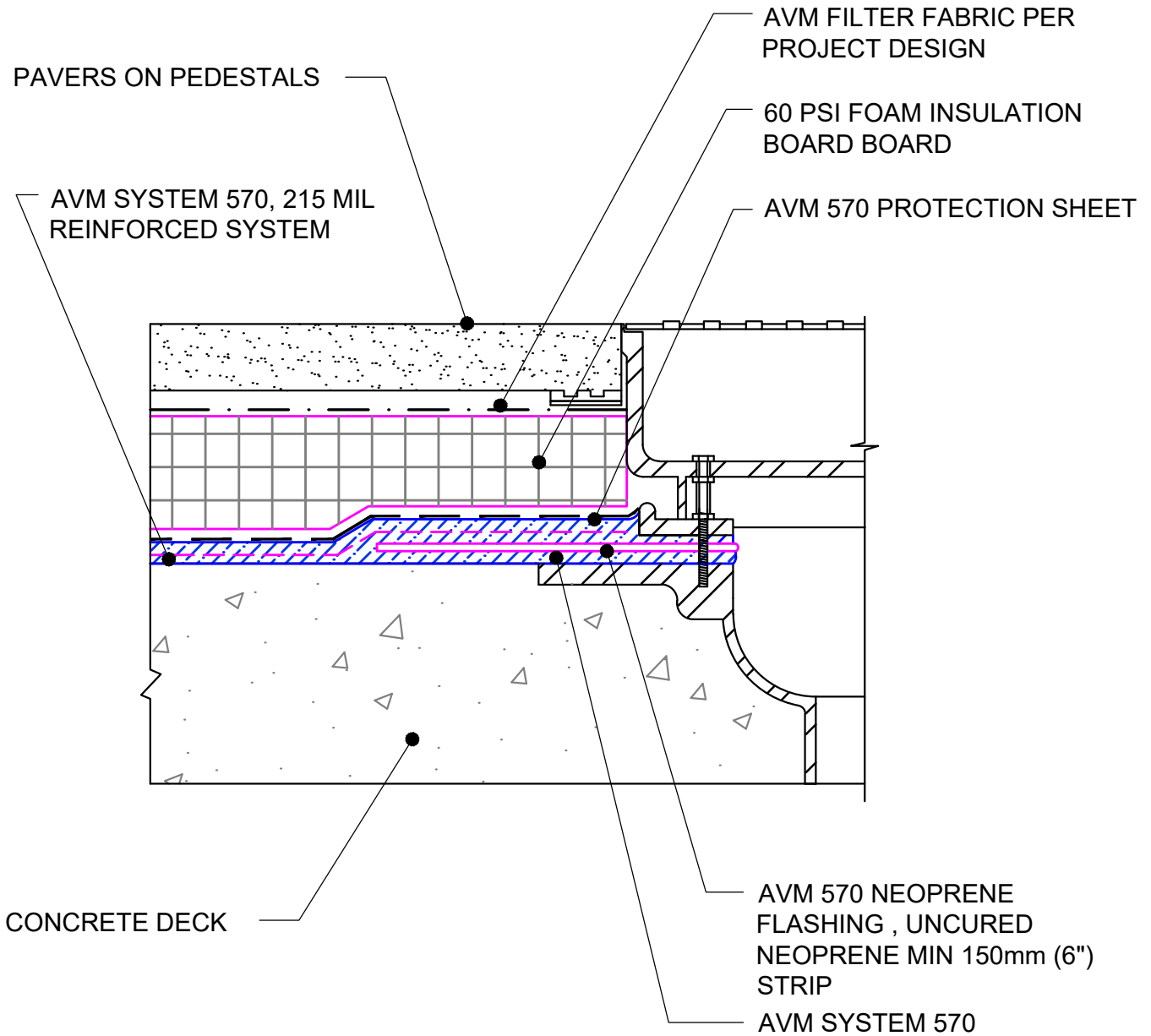
- Notes:**
1. Aussie Membrane 570 is a Hot Rubber(Hot-Applied Asphalt-Based Composition Membrane) for Between-Slabs, Planters, Roof-Gardens and similar type Waterproofing.
 2. Typical membrane is 215 mils thick with fabric reinforcement. If specified differently, contact AVM for approval.
 3. Contact AVM if no drain board or protection board is specified.
 4. Remove/grind/repair as necessary any protrusions, sharp edges, etc that may puncture or damage the membrane.
 5. Deck-to-Wall corners must be waterproofed as shown on AVM's Details.
 6. Substrates must be sloped to drains and/or edges before membrane installation. (Min 1/4" per foot) Substrates must have sufficient drains and proper drainage systems to effectively evacuate excessive water.
 7. If water is to drain over the edge, then edge metals MUST have sufficient weep holes (at least every 6") and must be strong enough (thick enough) to act as a concrete form.
 8. Many edge details are possible. All must allow for proper water evacuation. (None should trap water) Consult AVM for details.
 9. Drainage board for topping Slabs up to 4" thick for pedestrian applications: Use AVM Drain Board 6000.
 10. Drainage board for topping slabs over 4" thick or for vehicular applications: Use AVM Drain Board 9000.

DETAIL #: AVM-0570-6001

AVM SYSTEM 570

CONCRETE DECK

Drain Detail (Typical)
AVM Aussie Membrane 570
Hot Rubber



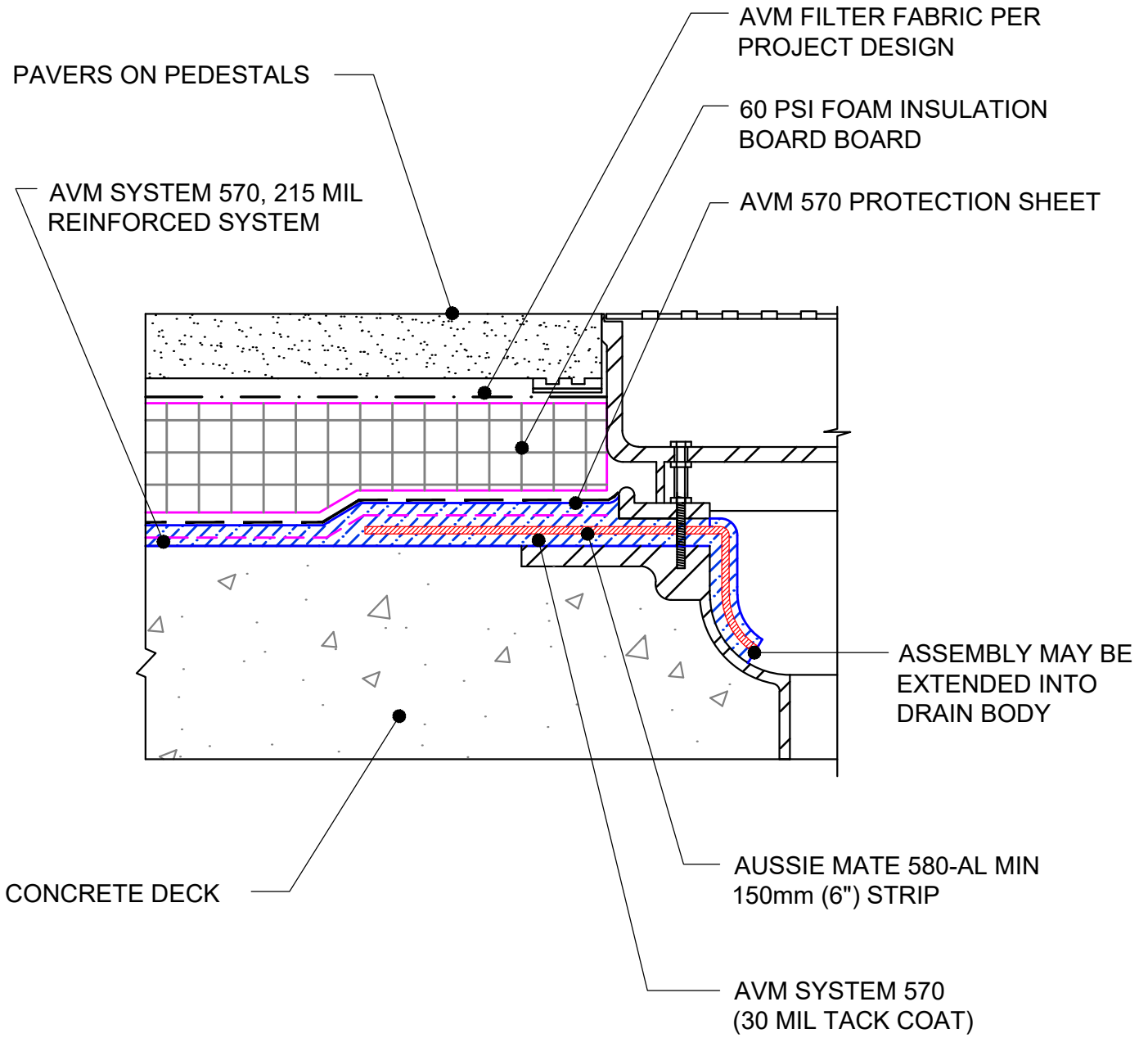
USE AVM ADHESIVE 570 ON CONCRETE RECEIVING AVM SYSTEM 570

DETAIL #: AVM-0570-6005

AVM SYSTEM 570

CONCRETE DECK

Drain Detail (Typical) with Aussie Mate 580-AL
AVM Aussie Membrane 570
Hot Rubber



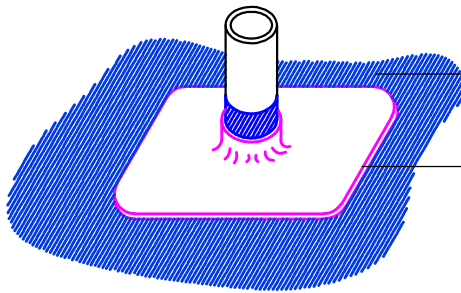
USE AVM ADHESIVE 570 ON CONCRETE RECEIVING AVM SYSTEM 570

DETAIL #: AVM-0570-6201

AVM SYSTEM 570

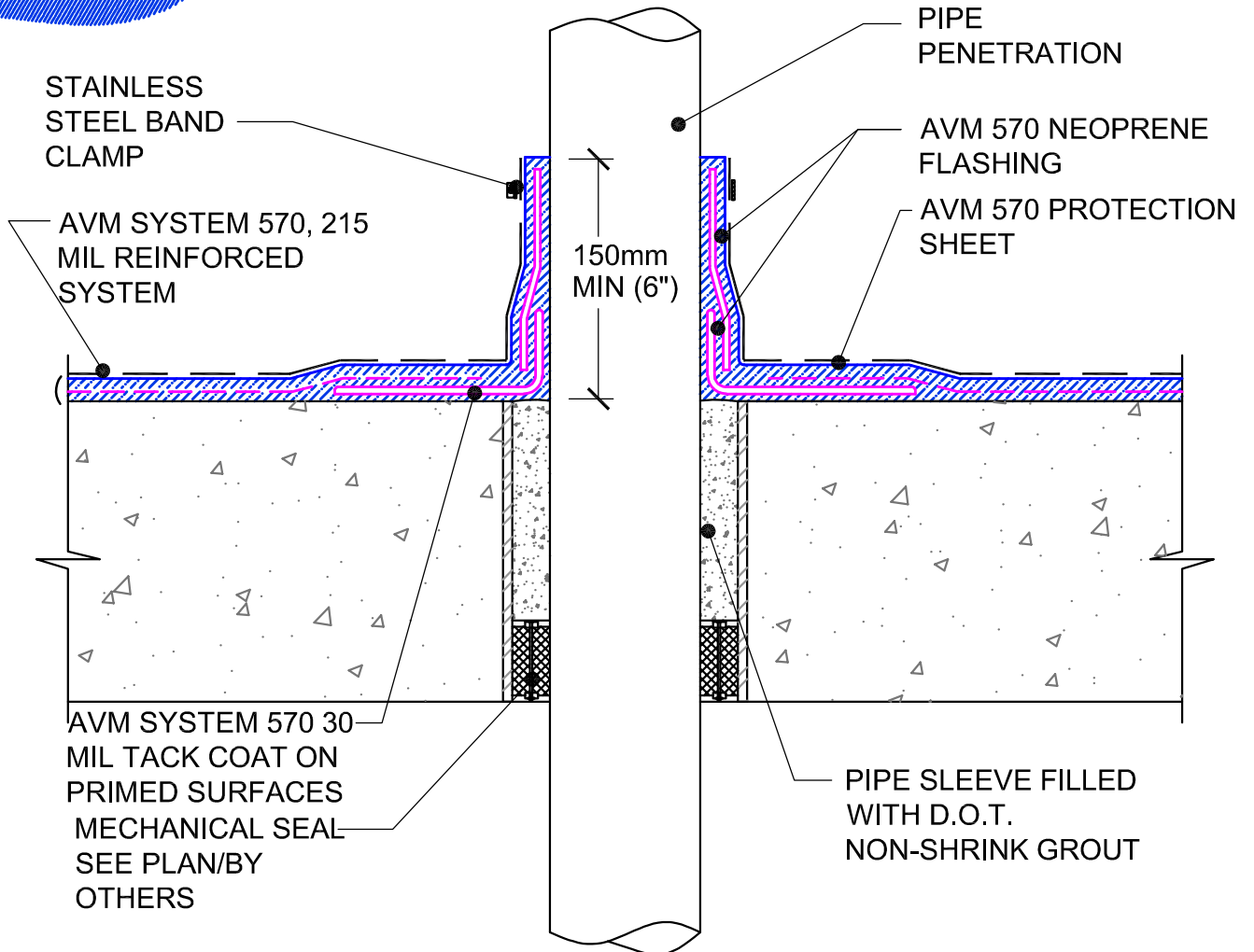
CONCRETE DECK

Vertical or Horizontal Pipe Penetrations
AVM Aussie Membrane 570
Hot Rubber



AVM SYSTEM 570
90 MIL TACK COAT

SLIDE NEOPRENE FLASHING TIGHTLY
OVER PIPE PENETRATION AND ONTO TACK
COAT OF AVM SYSTEM 570



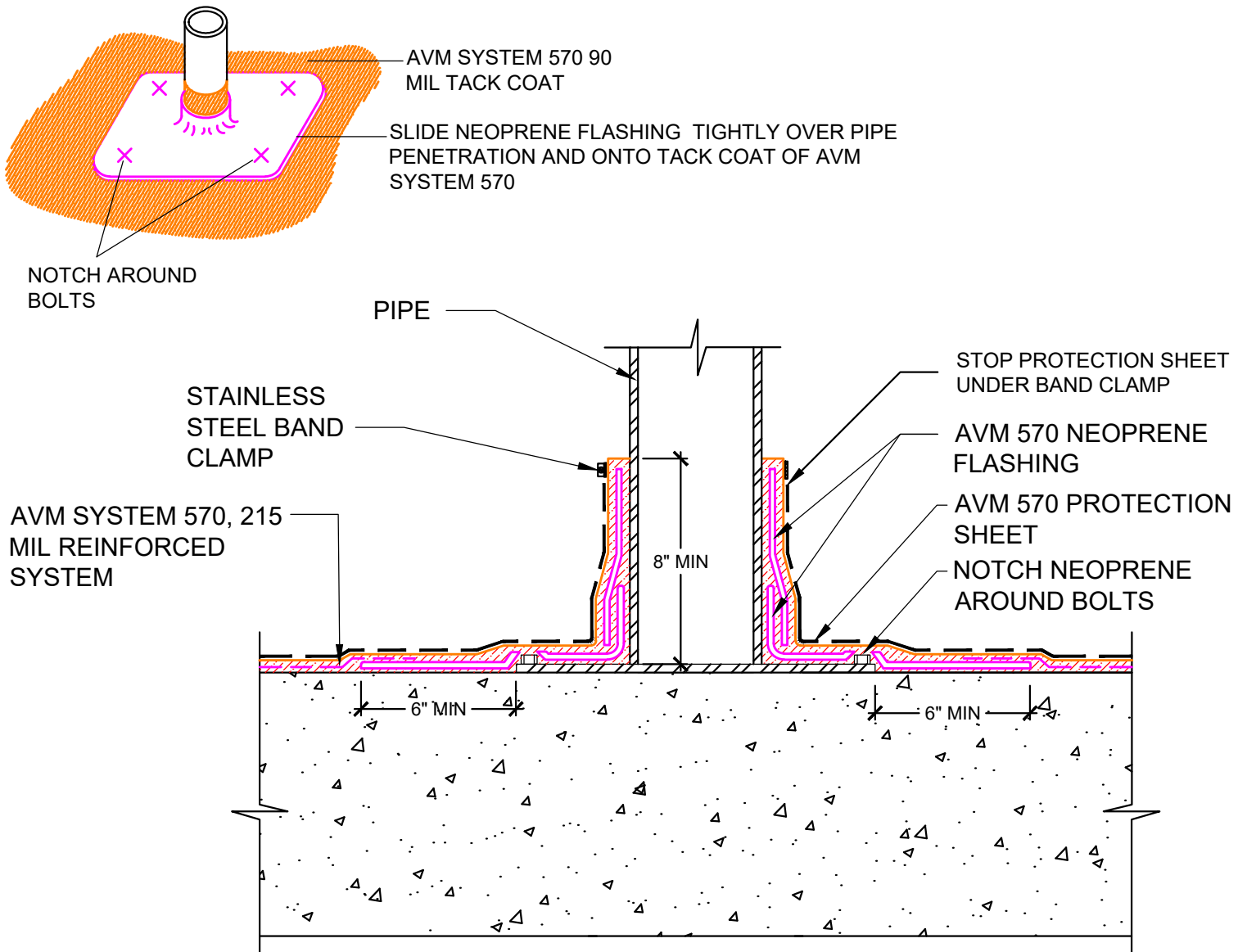
NOTE: CLEAN ALL PENETRATIONS OF DIRT, RUST AND OIL. ROUGHEN
SURFACE OF PIPE BEFORE APPLYING PRIMER. VERIFY PENETRATION IS
PROPERLY SECURED TO DECK OR WALL TO AVOID MOVEMENT OF PIPE.

DETAIL #: AVM-0570-6202

AVM SYSTEM 570

CONCRETE DECK

Pipe Penetration with Base Plate
AVM Aussie Membrane 570
Hot Rubber



USE AVM ADHESIVE 570 ON CONCRETE RECEIVING AVM SYSTEM 570

NOTE: CLEAN ALL PENETRATIONS OF DIRT, RUST AND OIL. ROUGHEN SURFACE OF PIPE BEFORE APPLYING PRIMER. VERIFY PENETRATION IS PROPERLY SECURED TO DECK OR WALL TO AVOID MOVEMENT OF PIPE.

AVM Industries, Inc.
8245 Remmet Ave, Canoga Park, CA 91304

Quality Waterproofing Products

888.414.1041 818.888.0050
www.avmindustries.com

FILE NAME: 0570-6202-Horizontal-Pipe-Penetration-with-base-plate

Protected by Copyright - AVM Industries, Inc.

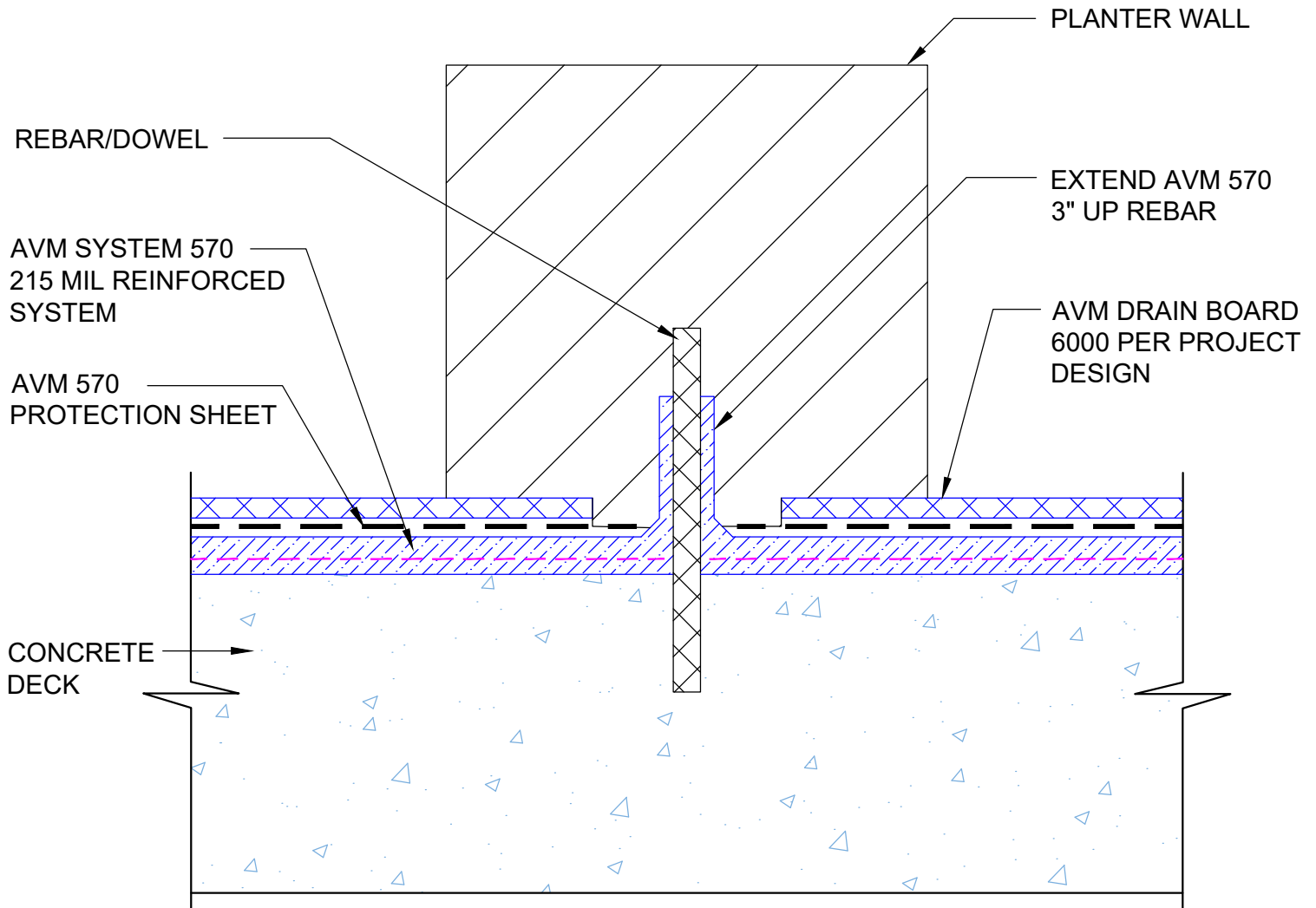
Revision Date 2/25/2019

DETAIL #: AVM-0570-6252

AVM SYSTEM 570

CONCRETE DECK

Wall Rebar Penetration
AVM Aussie Membrane 570
Hot Rubber



USE AVM ADHESIVE 570 ON CONCRETE RECEIVING AVM SYSTEM 570

AVM Industries, Inc.
8245 Remmet Ave, Canoga Park, CA 91304

Quality Waterproofing Products

888.414.1041 818.888.0050
www.avmindustries.com

FILE NAME: **0570-6252-Wall Rebar Penetration**
Protected by Copyright - AVM Industries, Inc.

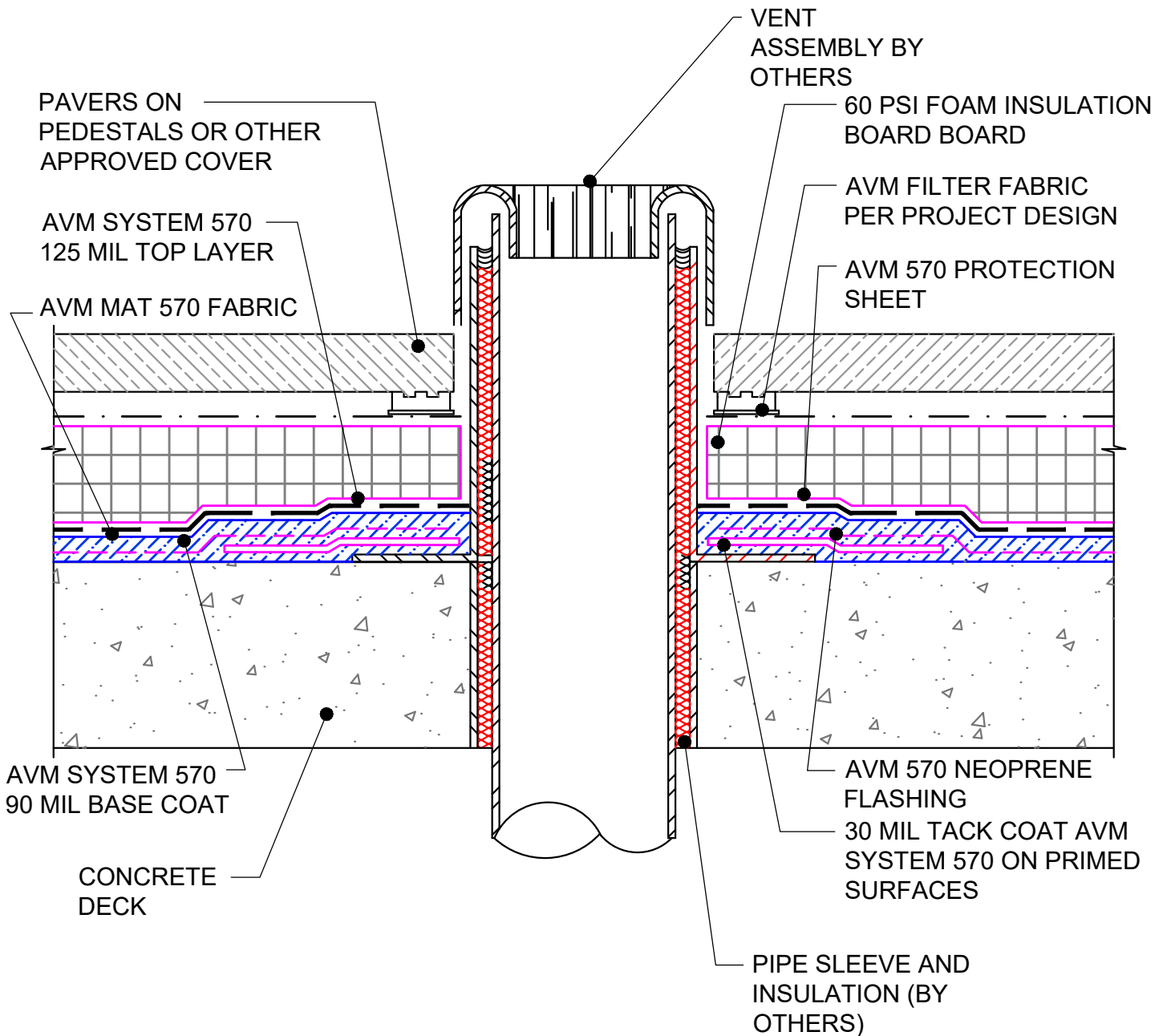
Revision Date 1/22/2021

DETAIL #: AVM-0570-6301

AVM SYSTEM 570

CONCRETE DECK

Vent Detail
AVM Aussie Membrane 570
Hot Rubber



USE AVM ADHESIVE 570 ON CONCRETE RECEIVING AVM SYSTEM 570

DETAIL #: AVM-0570-6401

AVM SYSTEM 570

FOUNDATION WALL

Termination at Grade
AVM Aussie Membrane 570
Hot Rubber

