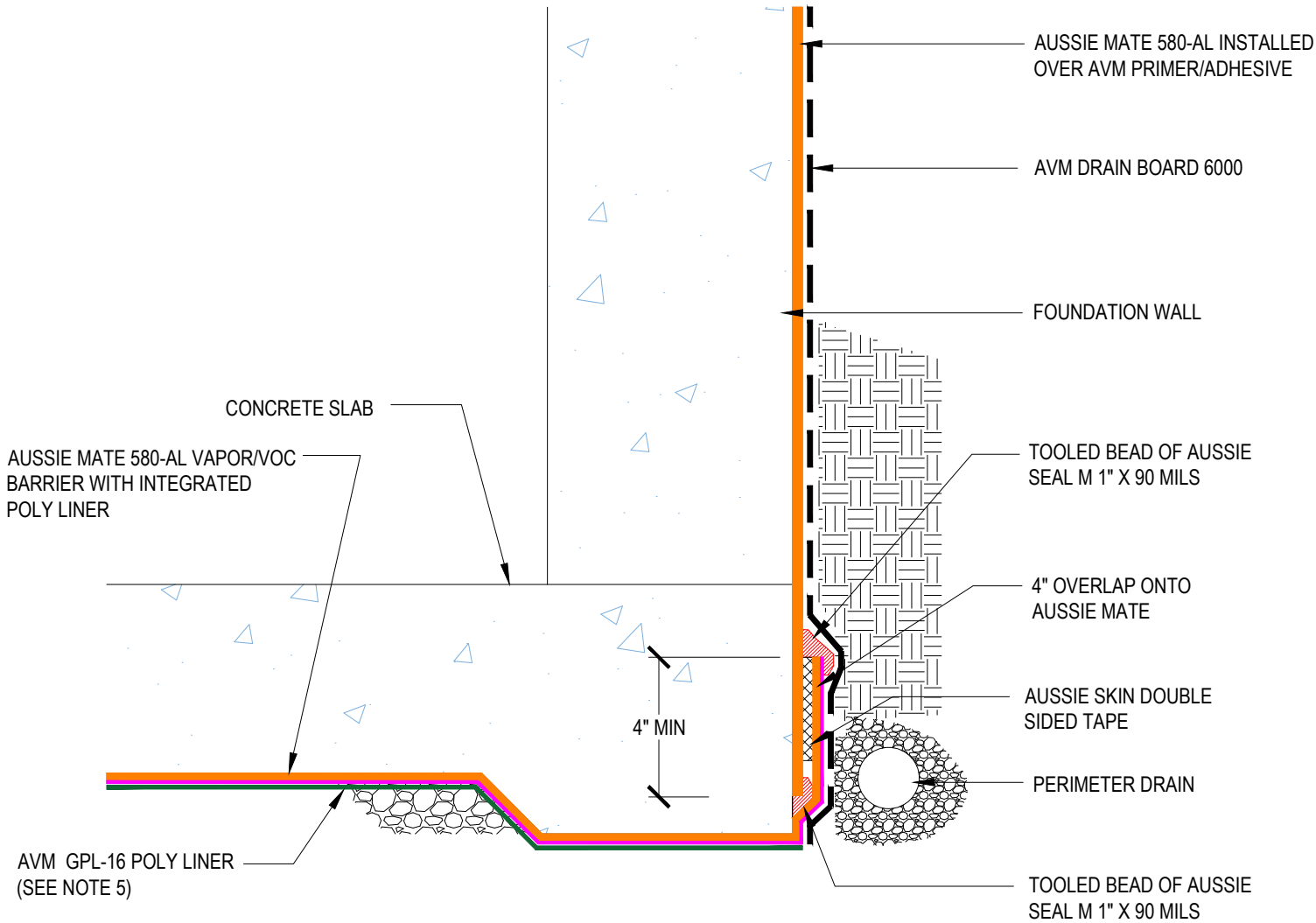


DETAIL #:
 0580-AL-0004
 System:
 Aussie Mate 580-AL

Transition to Vapor Barrier Flush Footing



AVM AUSSIE MATE 580-AL



Notes:

1. Aussie Mate 580-AL is an LARR approved Waterproofing membrane and Methane Barrier.
2. Aussie Mate 580-AL is a UV stable, heavy duty bituminous sheet membrane with aluminum protection layer for Below-Grade waterproofing applications and is available in a 60 mil or 80 mil thickness . Aussie Mate 580-AL may also be used as a methane and/or vapor barrier under horizontal slabs on grade.
3. All Aussie Mate overlaps must be minimum 2-1/2\" - See "Lapping Details" for more information
4. When installed under slab do not remove integrated poly liner (release liner).
5. GPL-16 is recommended for crushed rock or irregular substrates and is not needed for compacted earth substrates.