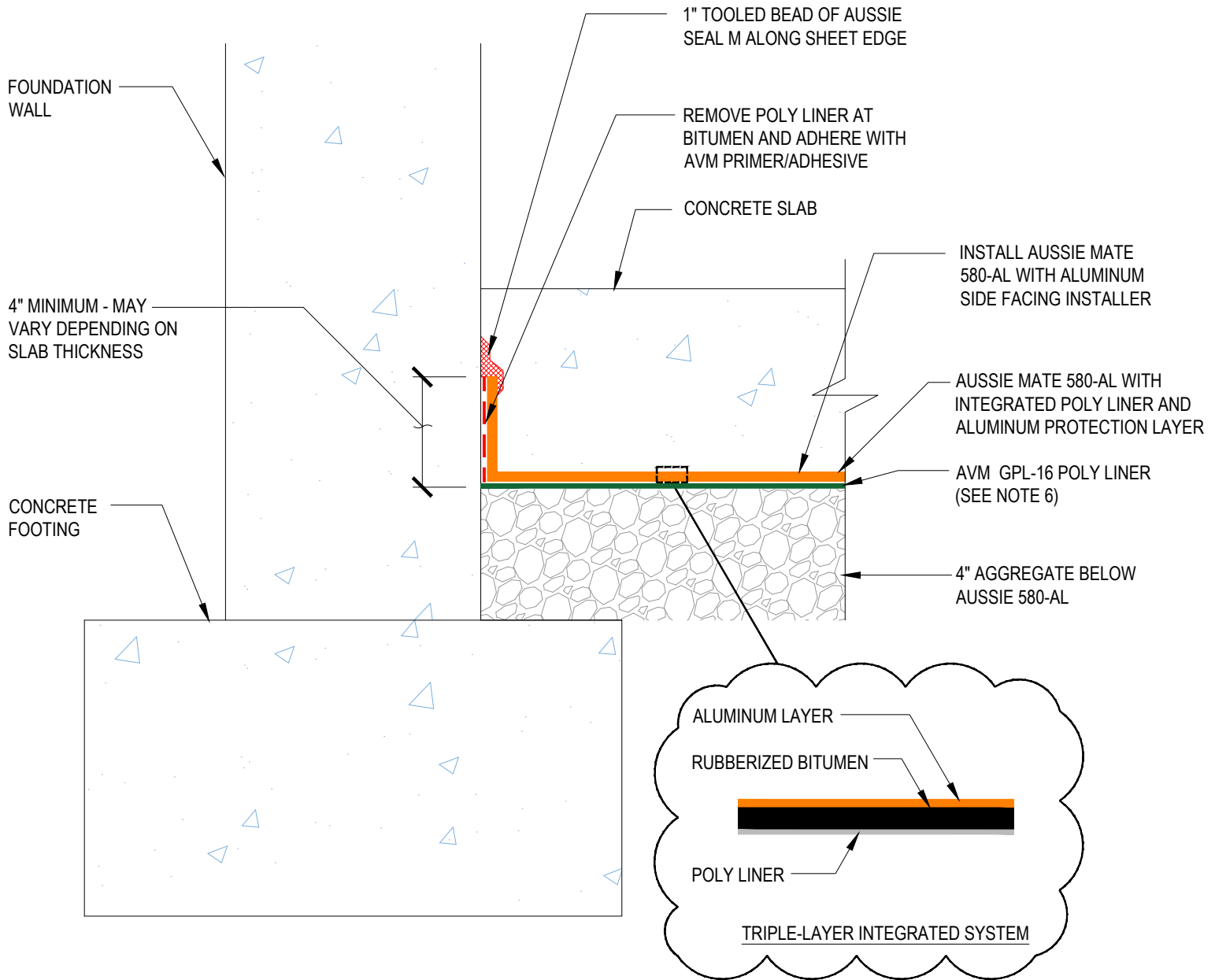


DETAIL #:  
 0580-AL-4018-M  
 System:  
 Aussie Mate 580-AL Methane

# Typical Vertical Membrane Termination



**AVM AUSSIE MATE 580-AL  
 METHANE / VOC BARRIER ONLY**



**Notes:**

1. Aussie Mate 580-AL is an LARR approved Waterproofing membrane and Methane Barrier.
2. Aussie Mate 580-AL is a UV stable, heavy duty bituminous sheet membrane with aluminum protection layer for Below-Grade waterproofing applications and is available in a 60 mil or 80 mil thickness . Aussie Mate 580-AL may also be used as a methane and/or vapor barrier under horizontal slabs on grade.
3. All Aussie Mate overlaps must be minimum 2-1/2" - See "Lapping Details" for more information
4. When installed under slab do not remove integrated poly liner (release liner).
5. Shown without protection. Consult with Methane Engineer for membrane protection requirements.
6. GPL-16 is recommended for crushed rock or irregular substrates and is not needed for compacted earth substrates.