

DETAIL #:

0580-AL-0002

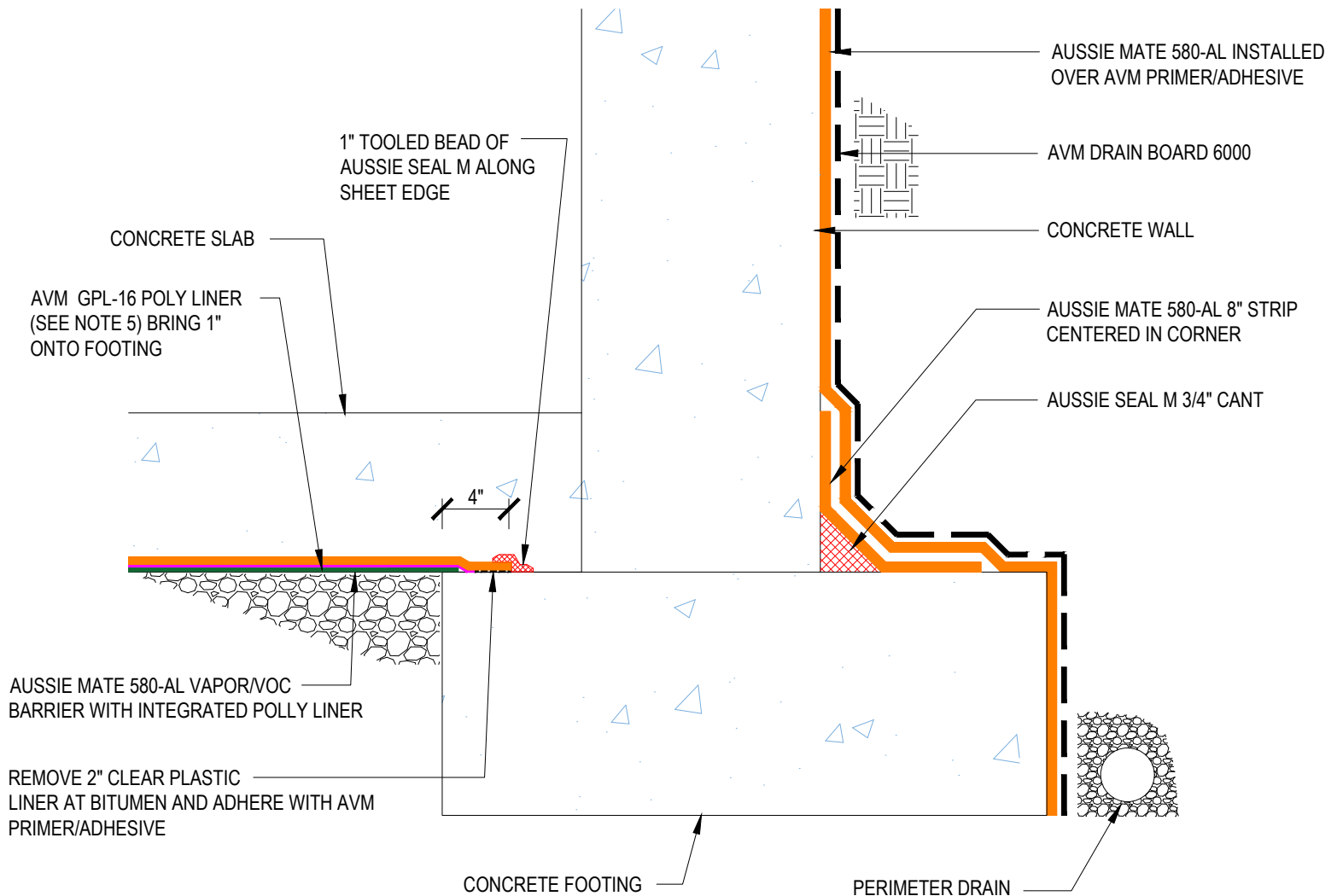
System:

Aussie Mate 580-AL

Backfilled Wall with Vapor Barrier Under Slab



AVM AUSSIE MATE 580-AL



Notes:

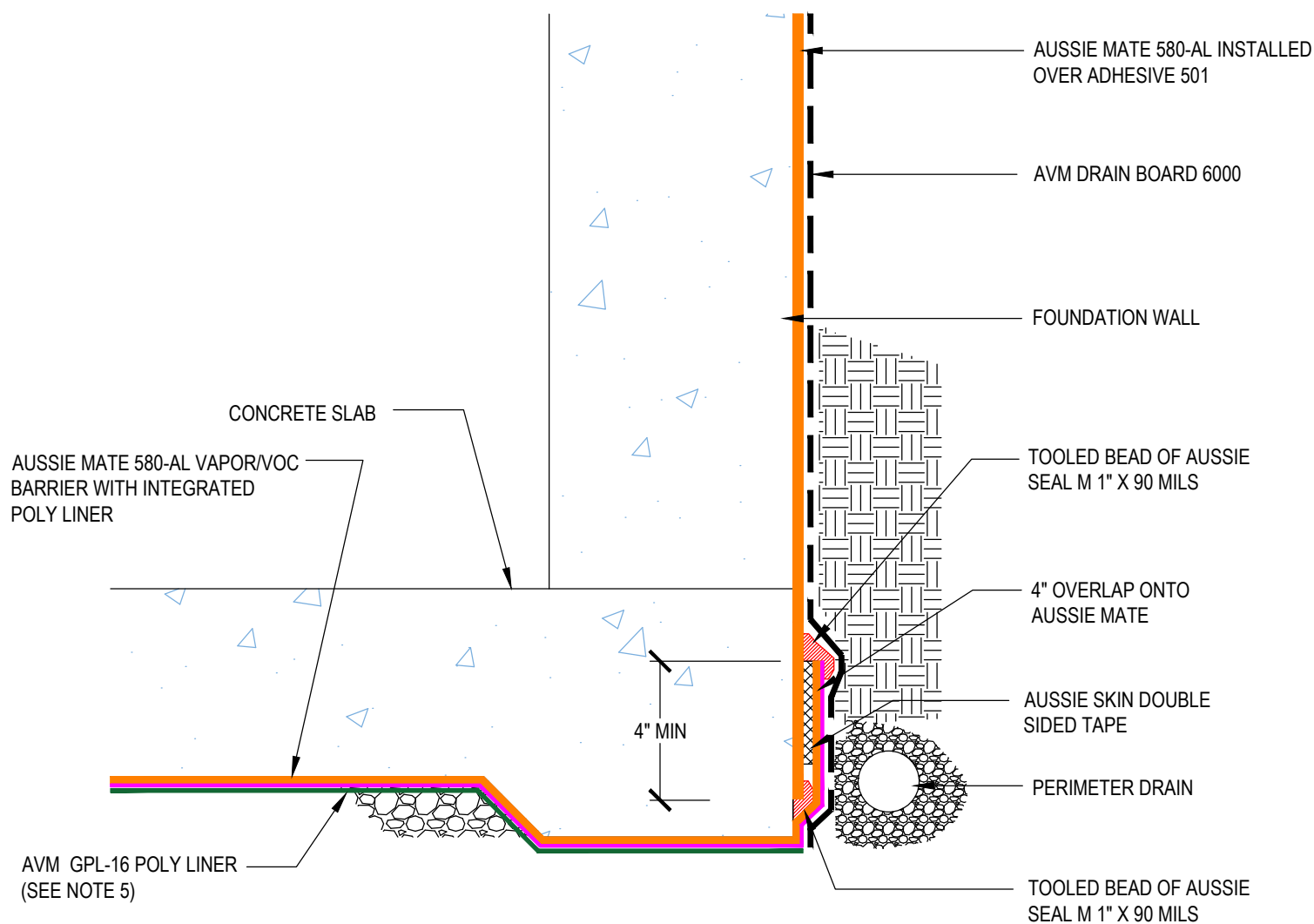
1. Aussie Mate 580-AL is an LARR approved Waterproofing membrane and Methane Barrier.
2. Aussie Mate 580-AL is a UV stable, heavy duty bituminous sheet membrane with aluminum protection layer for Below-Grade waterproofing applications and is available in a 60 mil or 80 mil thickness . Aussie Mate 580-AL may also be used as a methane and/or vapor barrier under horizontal slabs on grade.
3. All Aussie Mate overlaps must be minimum 2-1/2" - See "Lapping Details" for more information
4. When installed under slab do not remove integrated poly liner (release liner).
5. GPL-16 is required if the substrate is crushed rock or irregular and is not required with a compacted dirt substrate.

DETAIL #:	0580-AL-0004
System:	Aussie Mate 580-AL

Transition to Vapor Barrier Flush Footing



AVM AUSSIE MATE 580-AL



Notes:

1. Aussie Mate 580-AL is an LARR approved Waterproofing membrane and Methane Barrier.
2. Aussie Mate 580-AL is a UV stable, heavy duty bituminous sheet membrane with aluminum protection layer for Below-Grade waterproofing applications and is available in a 60 mil or 80 mil thickness . Aussie Mate 580-AL may also be used as a methane and/or vapor barrier under horizontal slabs on grade.
3. All Aussie Mate overlaps must be minimum 2-1/2" - See "Lapping Details" for more information
4. When installed under slab do not remove integrated poly liner (release liner).
5. GPL-16 is recommended for crushed rock or irregular substrates and is not needed for compacted earth substrates.

AVM Industries, Inc.
8245 Remmet Ave, Canoga Park, CA 91304

Quality Waterproofing Products

888.414.1041 818.888.0050
www.avmindustries.com

FILE NAME: 0580-AL-0004

Protected by Copyright - AVM Industries, Inc. Revision Date 10/20/2020

DETAIL #:

0580-AL-0004

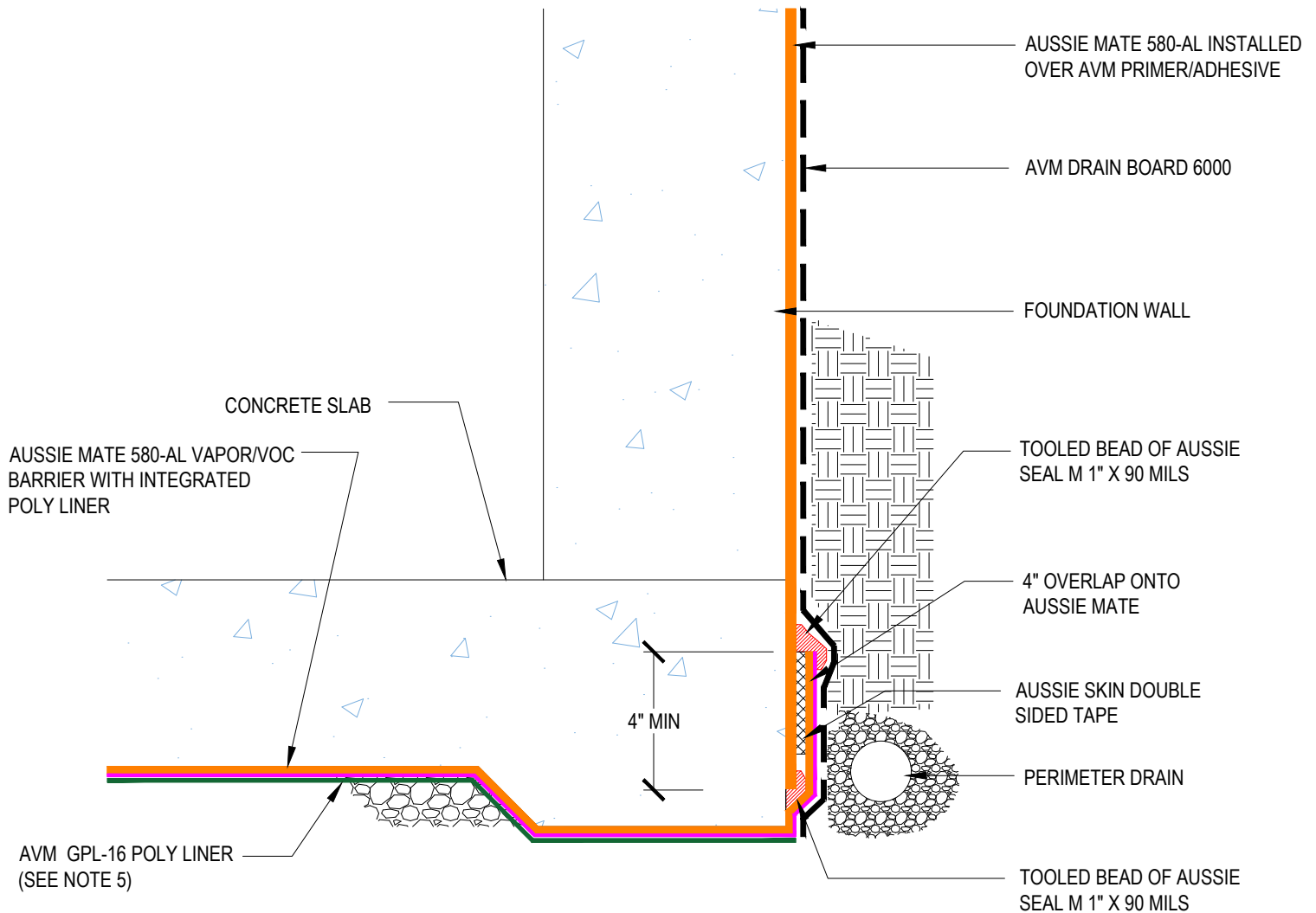
System:

Aussie Mate 580-AL

Transition to Vapor Barrier Flush Footing



AVM AUSSIE MATE 580-AL



Notes:

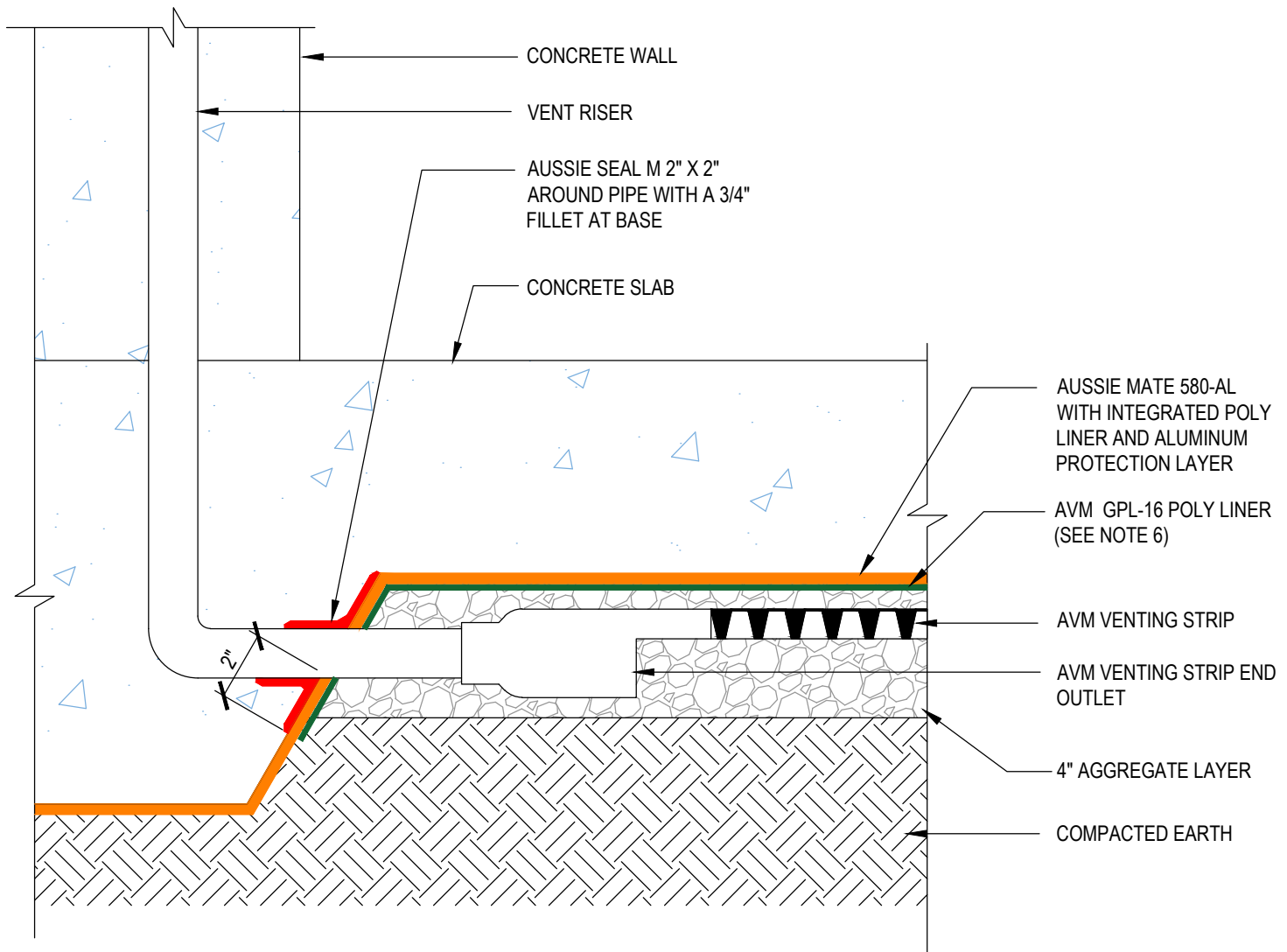
1. Aussie Mate 580-AL is an LARR approved Waterproofing membrane and Methane Barrier.
2. Aussie Mate 580-AL is a UV stable, heavy duty bituminous sheet membrane with aluminum protection layer for Below-Grade waterproofing applications and is available in a 60 mil or 80 mil thickness . Aussie Mate 580-AL may also be used as a methane and/or vapor barrier under horizontal slabs on grade.
3. All Aussie Mate overlaps must be minimum 2-1/2" - See "Lapping Details" for more information
4. When installed under slab do not remove integrated poly liner (release liner).
5. GPL-16 is recommended for crushed rock or irregular substrates and is not needed for compacted earth substrates.

DETAIL #:
0580-AL-0101-M
System:
Aussie Mate 580-AL Methane

AVM Methane Gas Venting System End Outlet Connector



AVM AUSSIE MATE 580-AL
METHANE / VOC BARRIER ONLY



INSTALL AUSSIE MATE 580-AL WITH ALUMINUM SIDE FACING INSTALLER

Notes:

1. Aussie Mate 580-AL is an LARR approved Waterproofing membrane and Methane Barrier.
2. Aussie Mate 580-AL is a UV stable, heavy duty bituminous sheet membrane with aluminum protection layer for Below-Grade waterproofing applications and is available in a 60 mil or 80 mil thickness . Aussie Mate 580-AL may also be used as a methane and/or vapor barrier under horizontal slabs on grade.
3. All Aussie Mate overlaps must be minimum 2-1/2\" - See "Lapping Details" for more information
4. When installed under slab do not remove integrated poly liner (release liner).
5. Shown without protection. Consult with Methane Engineer for membrane protection requirements.
6. GPL-16 is recommended for crushed rock or irregular substrates and is not needed for compacted earth substrates.

DETAIL #:
0580-0110M

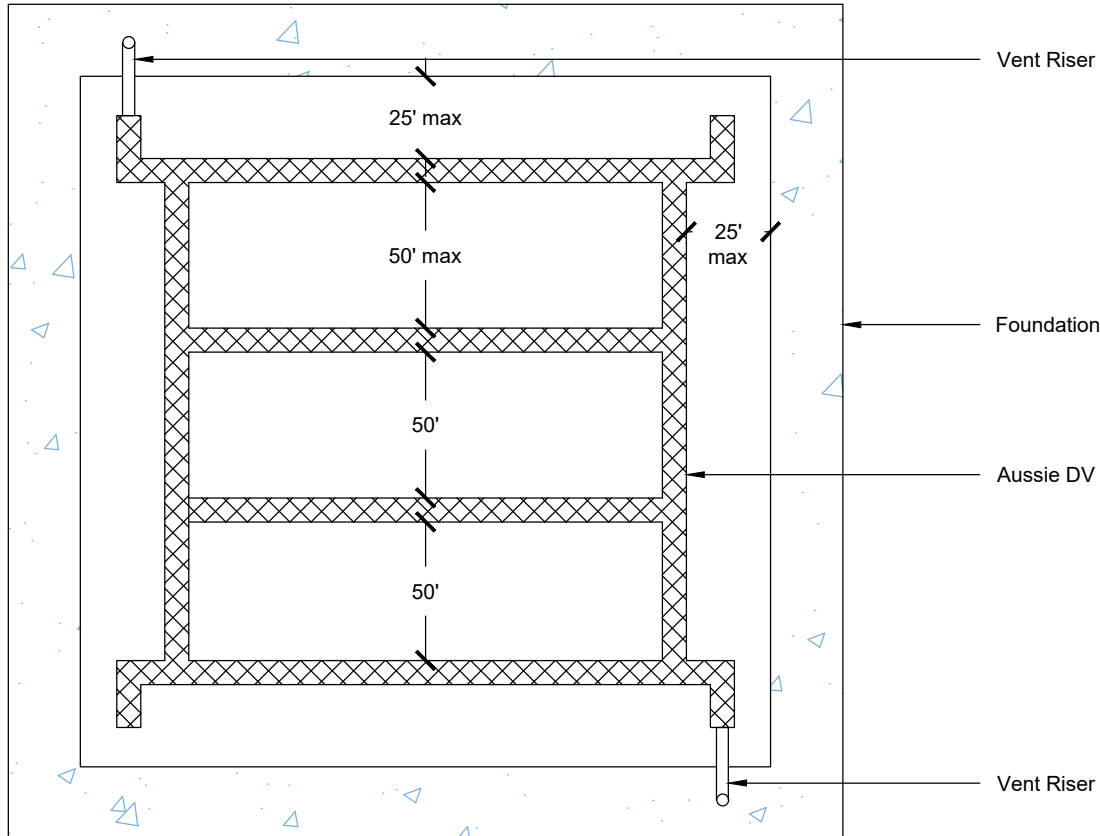
AVM System 580-AL

AUSSIE MATE METHANE

Aussie DV Vent Layout - Plan View



AVM AUSSIE MATE 580-AL
METHANE / VOC BARRIER ONLY



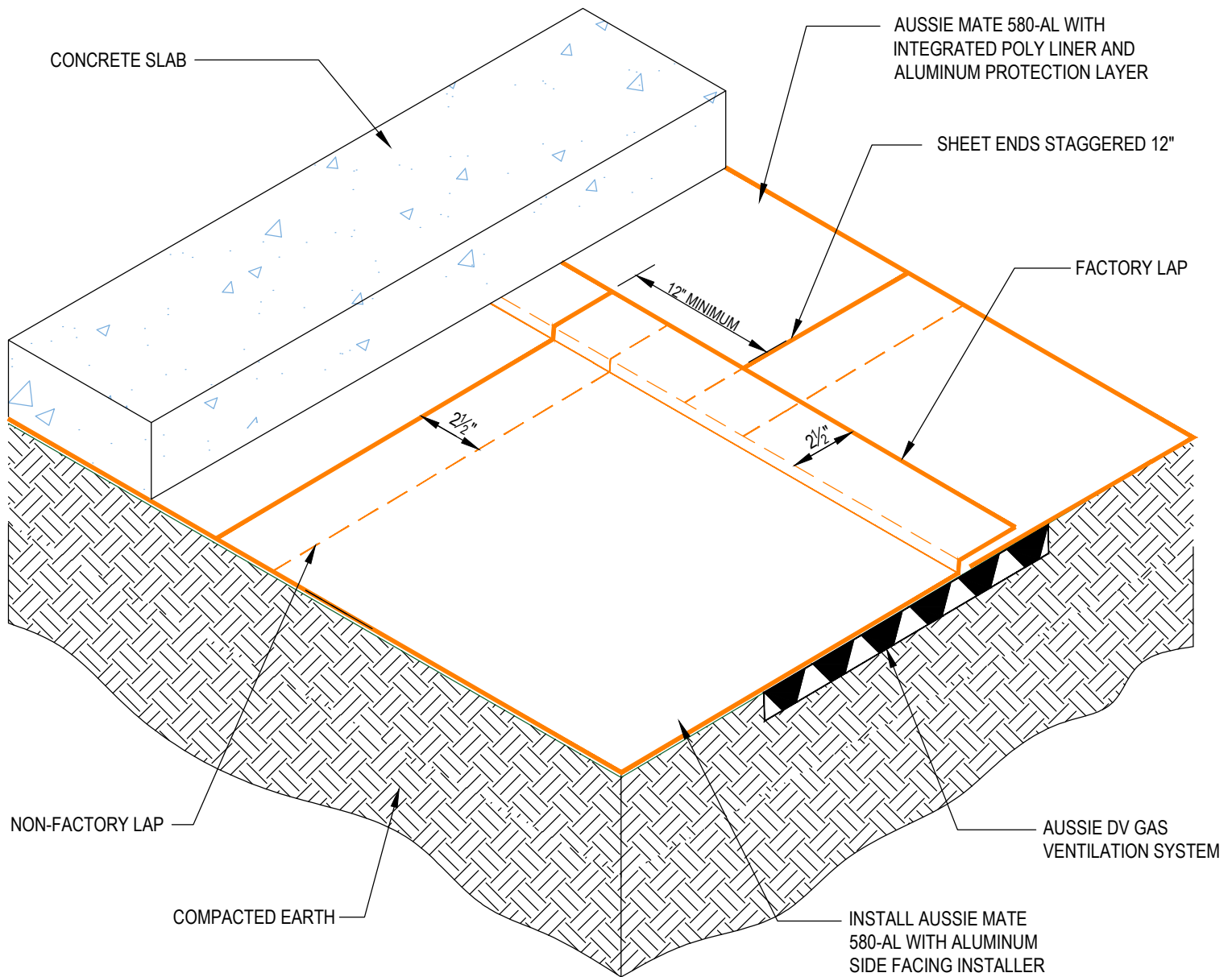
Notes:

1. Aussie Mate 580-AL is an LARR approved Waterproofing membrane and Methane Barrier.
2. Aussie Mate 580-AL is a UV stable, heavy duty bituminous sheet membrane with aluminum protection layer for Below-Grade waterproofing applications and is available in a 60 mil or 80 mil thickness . Aussie Mate 580-AL may also be used as a methane and/or vapor barrier under horizontal slabs on grade.
3. All Aussie Mate overlaps must be minimum 2-1/2" - See "Lapping Details" for more information
4. When installed under slab do not remove integrated poly liner (release liner).

DETAIL #:
0580-AL-4001-M
System:
Aussie Mate 580-AL Methane

Typical Under Slab Assembly Compacted Earth

AVM AUSSIE MATE 580-AL
METHANE / VOC BARRIER ONLY



Notes:

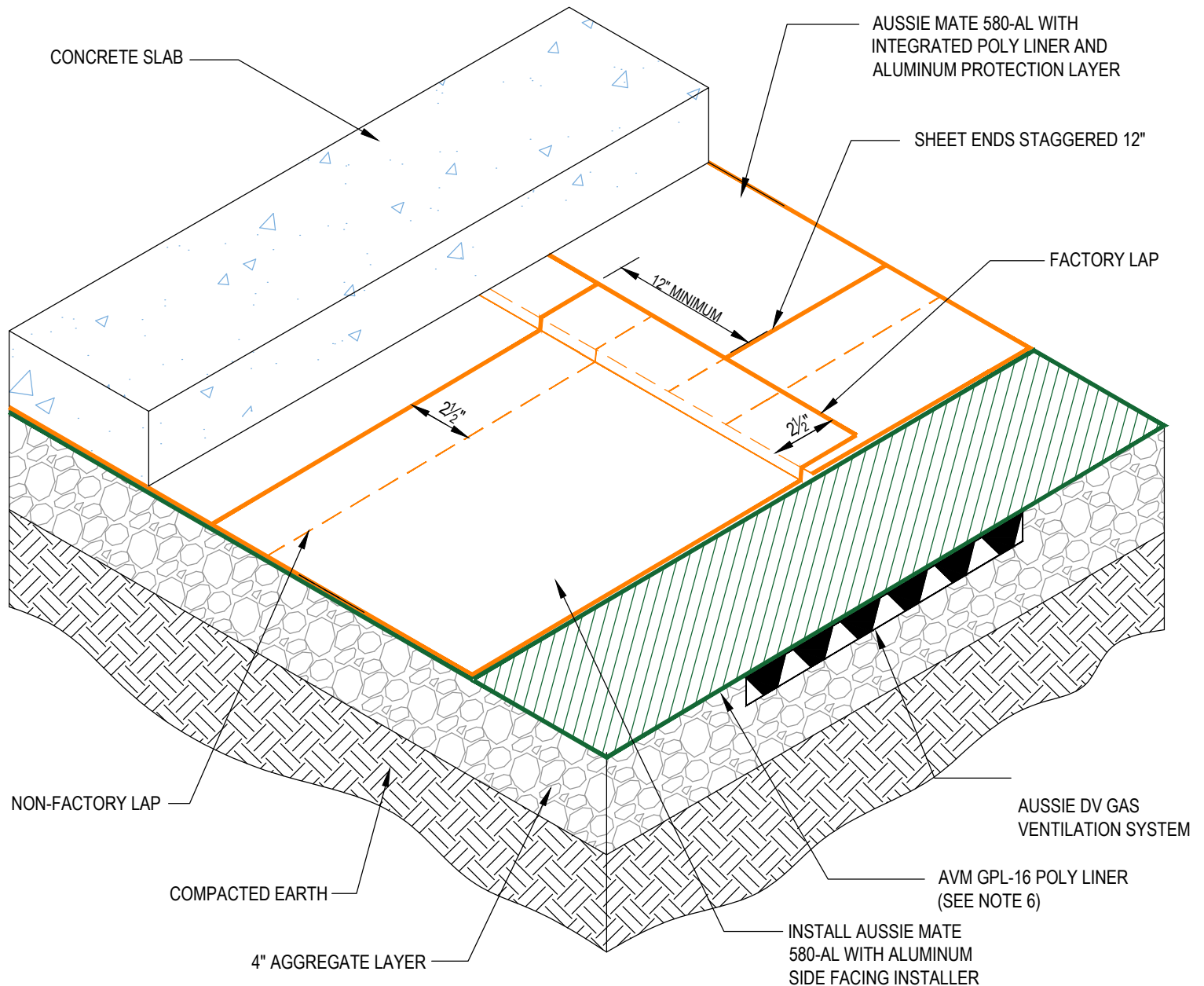
1. Aussie Mate 580-AL is an LARR approved Waterproofing membrane and Methane Barrier.
2. Aussie Mate 580-AL is a UV stable, heavy duty bituminous sheet membrane with aluminum protection layer for Below-Grade waterproofing applications and is available in a 60 mil or 80 mil thickness . Aussie Mate 580-AL may also be used as a methane and/or vapor barrier under horizontal slabs on grade.
3. All Aussie Mate overlaps must be minimum 2-1/2" - See "Lapping Details" for more information
4. When installed under slab do not remove integrated poly liner (release liner).
5. Shown without protection. Consult with Methane Engineer for membrane protection requirements.

DETAIL #:
0580-AL-4011-M
System:
Aussie Mate 580-AL Methane

Under Slab Assembly over Crushed Rock



AVM AUSSIE MATE 580-AL
METHANE / VOC BARRIER ONLY



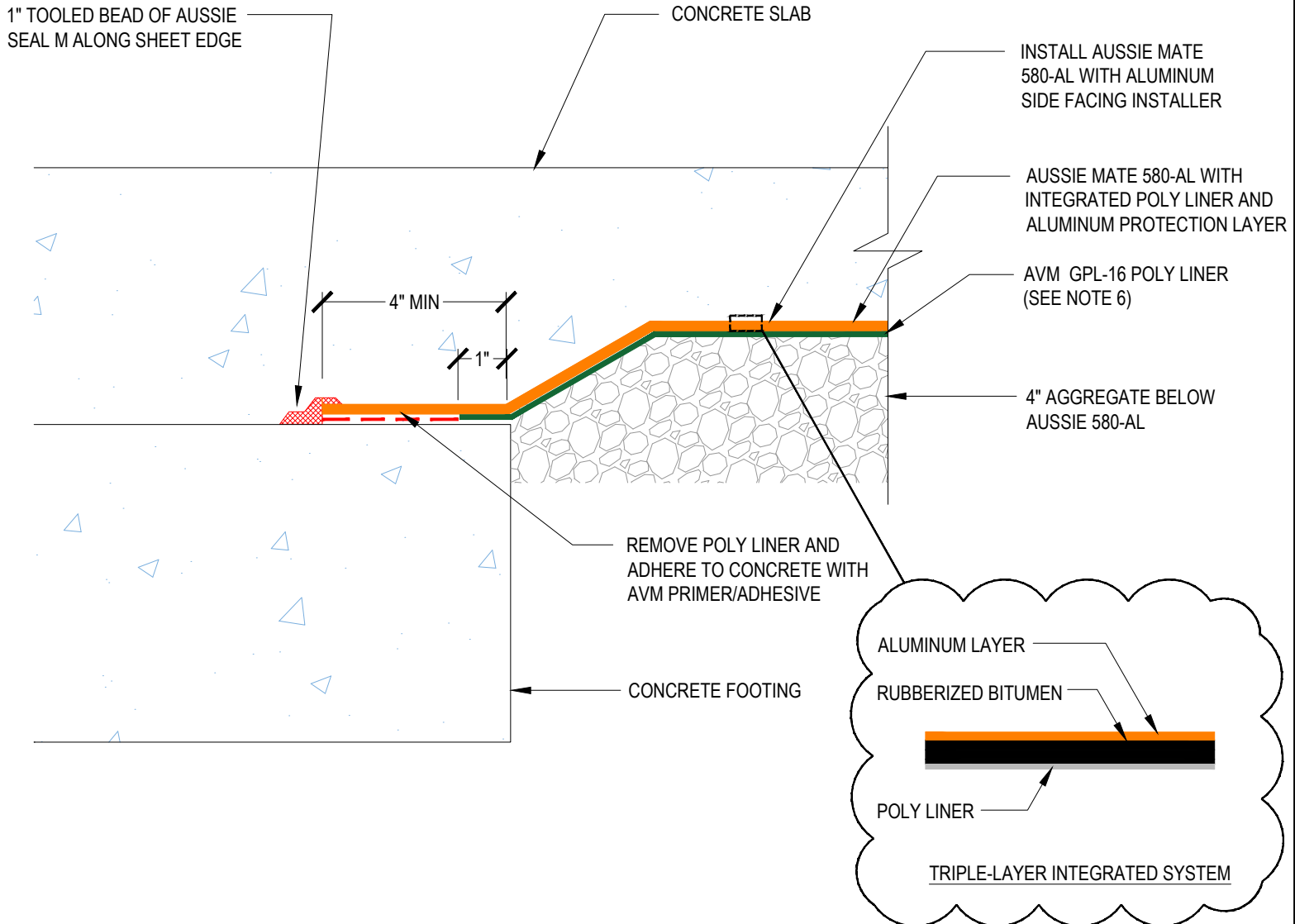
Notes:

1. Aussie Mate 580-AL is an LARR approved Waterproofing membrane and Methane Barrier.
2. Aussie Mate 580-AL is a UV stable, heavy duty bituminous sheet membrane with aluminum protection layer for Below-Grade waterproofing applications and is available in a 60 mil or 80 mil thickness . Aussie Mate 580-AL may also be used as a methane and/or vapor barrier under horizontal slabs on grade.
3. All Aussie Mate overlaps must be minimum 2-1/2" - See "Lapping Details" for more information
4. When installed under slab do not remove integrated poly liner (release liner).
5. Shown without protection. Consult with Methane Engineer for membrane protection requirements.
6. GPL-16 is recommended for crushed rock or irregular substrates and is not needed for compacted earth substrates.

DETAIL #:
0580-AL-4016-M
System:
Aussie Mate 580-AL Methane

Typical Horizontal Membrane Termination

AVM AUSSIE MATE 580-AL
METHANE / VOC BARRIER ONLY



Notes:

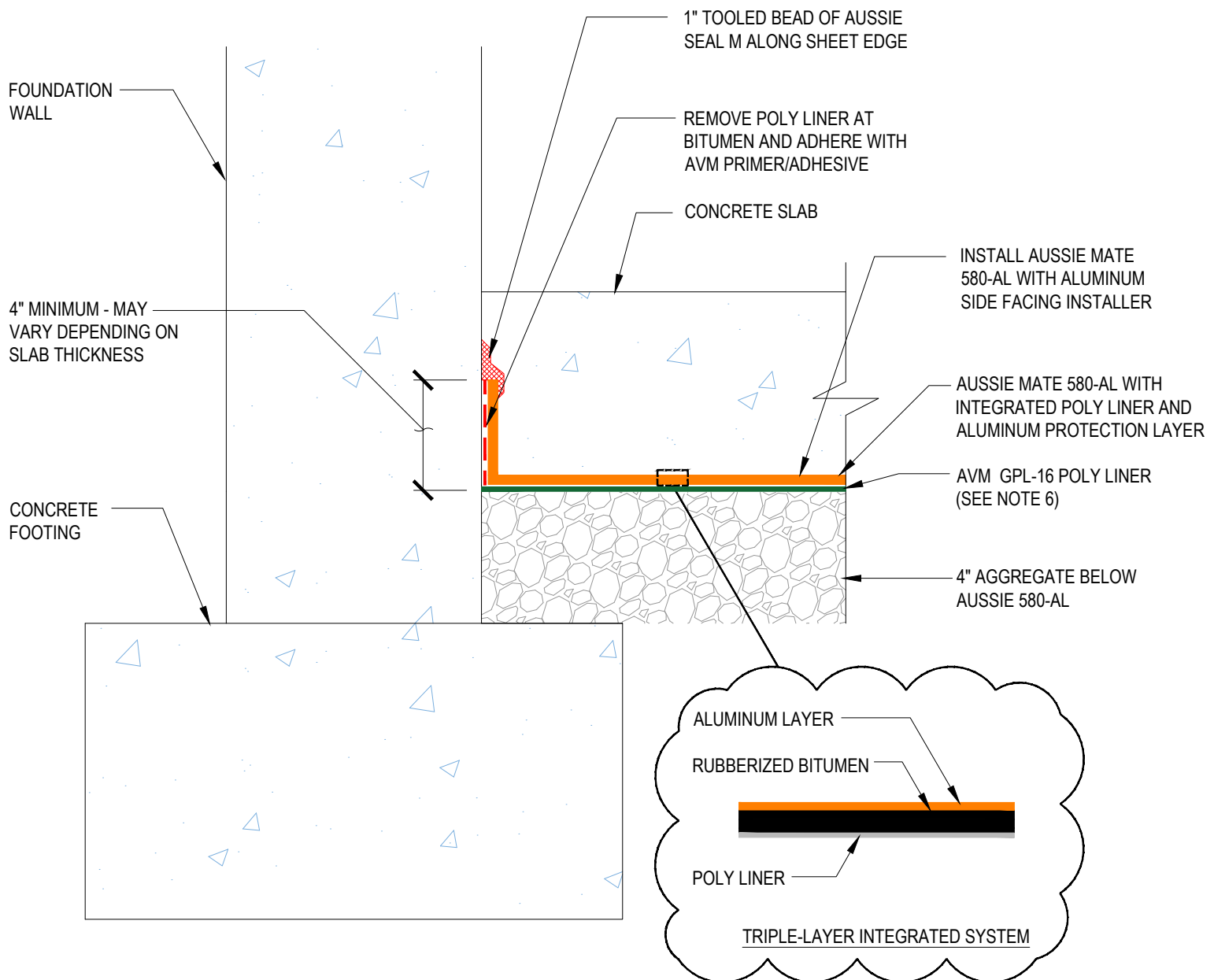
1. Aussie Mate 580-AL is an LARR approved Waterproofing membrane and Methane Barrier.
2. Aussie Mate 580-AL is a UV stable, heavy duty bituminous sheet membrane with aluminum protection layer for Below-Grade waterproofing applications and is available in a 60 mil or 80 mil thickness . Aussie Mate 580-AL may also be used as a methane and/or vapor barrier under horizontal slabs on grade.
3. All Aussie Mate overlaps must be minimum 2-1/2" - See "Lapping Details" for more information
4. When installed under slab do not remove integrated poly liner (release liner).
5. Shown without protection. Consult with Methane Engineer for membrane protection requirements.
6. GPL-16 is recommended for crushed rock or irregular substrates and is not needed for compacted earth substrates.

DETAIL #:
0580-AL-4018-M
System:
Aussie Mate 580-AL Methane

Typical Vertical Membrane Termination



**AVM AUSSIE MATE 580-AL
METHANE / VOC BARRIER ONLY**



Notes:

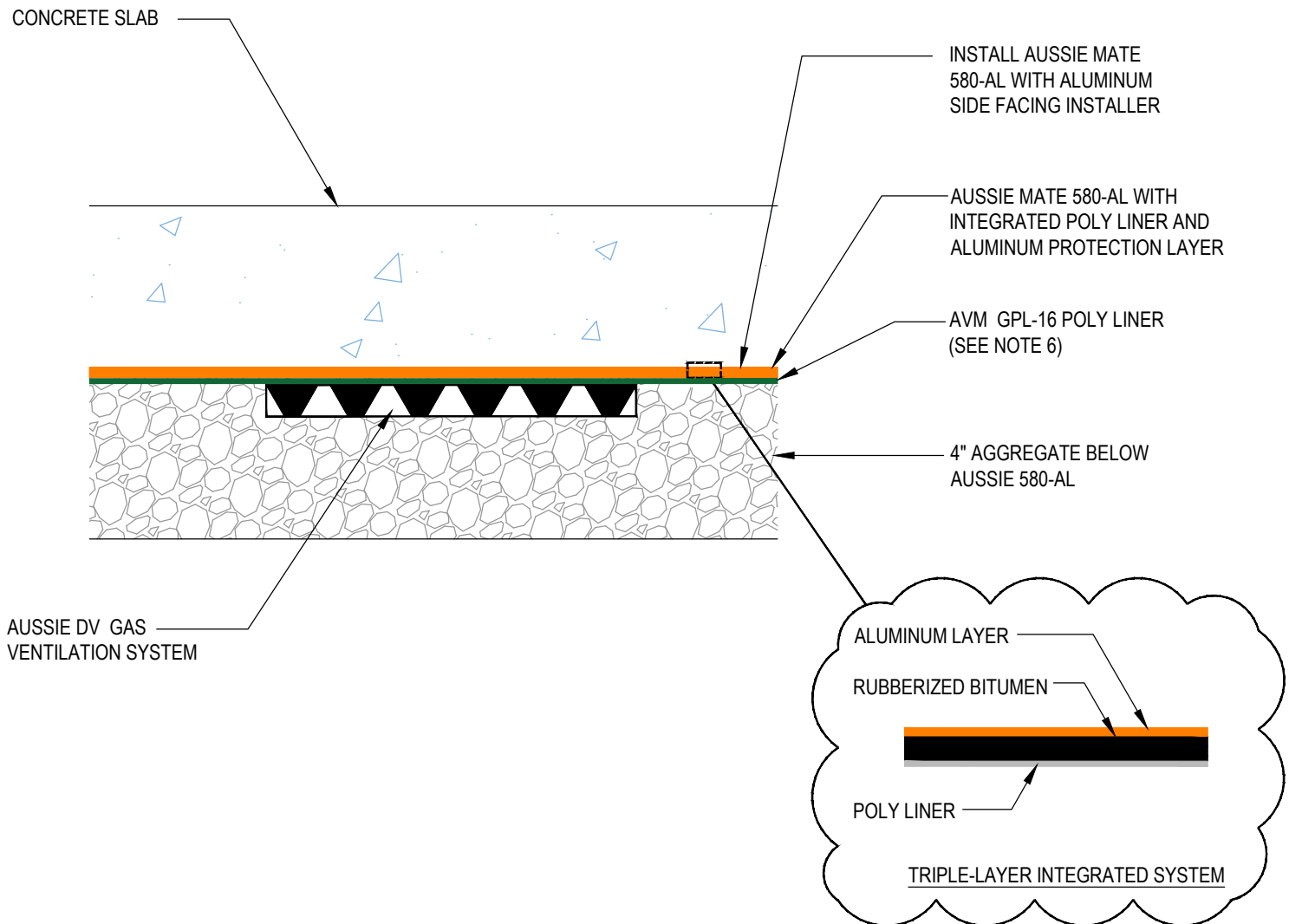
1. Aussie Mate 580-AL is an LARR approved Waterproofing membrane and Methane Barrier.
2. Aussie Mate 580-AL is a UV stable, heavy duty bituminous sheet membrane with aluminum protection layer for Below-Grade waterproofing applications and is available in a 60 mil or 80 mil thickness . Aussie Mate 580-AL may also be used as a methane and/or vapor barrier under horizontal slabs on grade.
3. All Aussie Mate overlaps must be minimum 2-1/2" - See "Lapping Details" for more information
4. When installed under slab do not remove integrated poly liner (release liner).
5. Shown without protection. Consult with Methane Engineer for membrane protection requirements.
6. GPL-16 is recommended for crushed rock or irregular substrates and is not needed for compacted earth substrates.

DETAIL #:
0580-AL-4020-M
System:
Aussie Mate 580-AL Methane

Sub-Slab Vent System



AVM AUSSIE MATE 580-AL
METHANE / VOC BARRIER ONLY



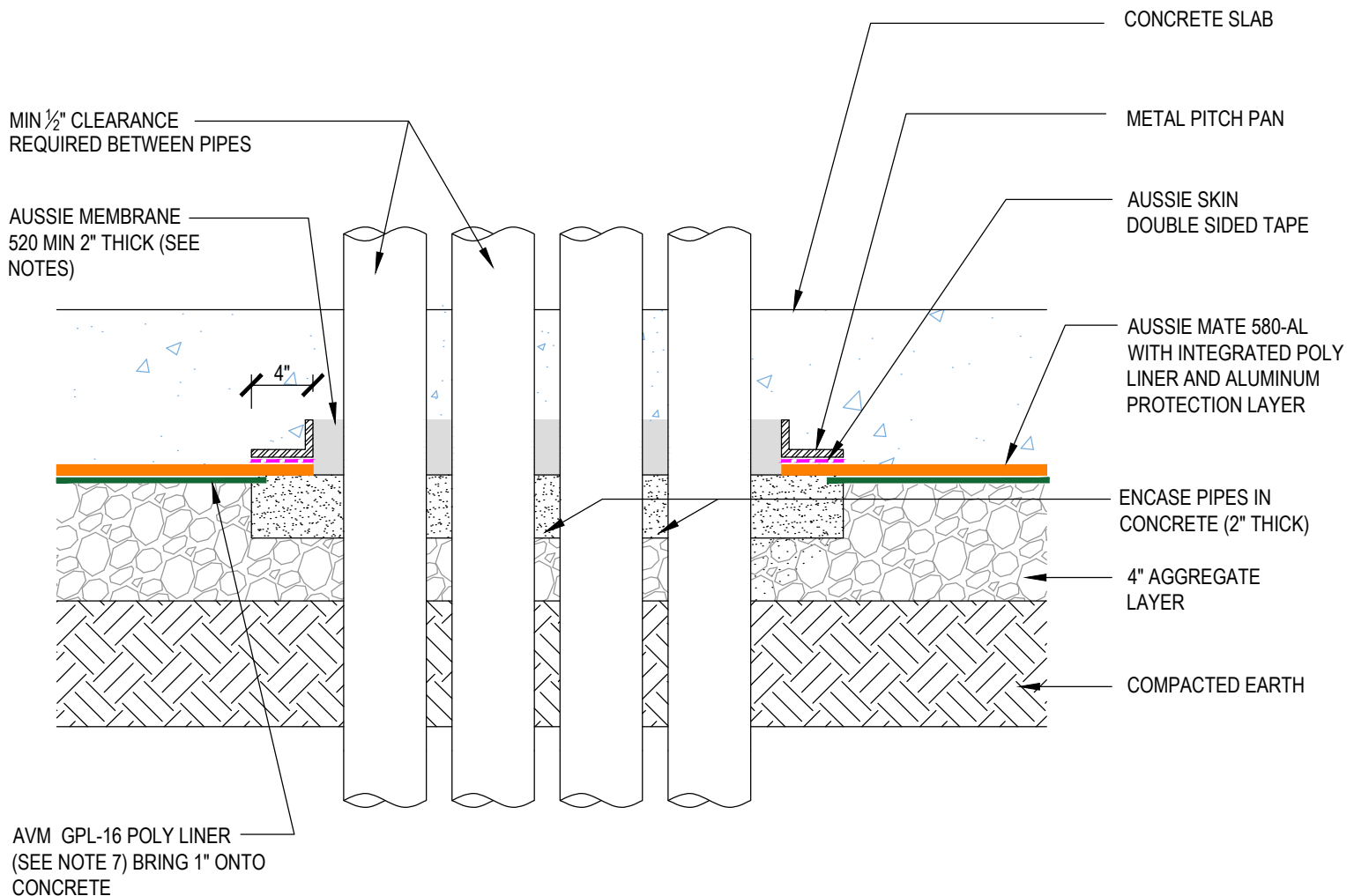
Notes:

1. Aussie Mate 580-AL is an LARR approved Waterproofing membrane and Methane Barrier.
2. Aussie Mate 580-AL is a UV stable, heavy duty bituminous sheet membrane with aluminum protection layer for Below-Grade waterproofing applications and is available in a 60 mil or 80 mil thickness . Aussie Mate 580-AL may also be used as a methane and/or vapor barrier under horizontal slabs on grade.
3. All Aussie Mate overlaps must be minimum 2-1/2" - See "Lapping Details" for more information
4. When installed under slab do not remove integrated poly liner (release liner).
5. Shown without protection. Consult with Methane Engineer for membrane protection requirements.
6. GPL-16 is recommended for crushed rock or irregular substrates and is not needed for compacted earth substrates.

DETAIL #:
0580-AL-6710-M
System:
Aussie Mate 580-AL Methane

Multiple Pipe Bank Pitch Pan

AVM AUSSIE MATE 580-AL
METHANE / VOC BARRIER ONLY



INSTALL AUSSIE MATE 580-AL WITH ALUMINUM SIDE FACING INSTALLER

Notes:

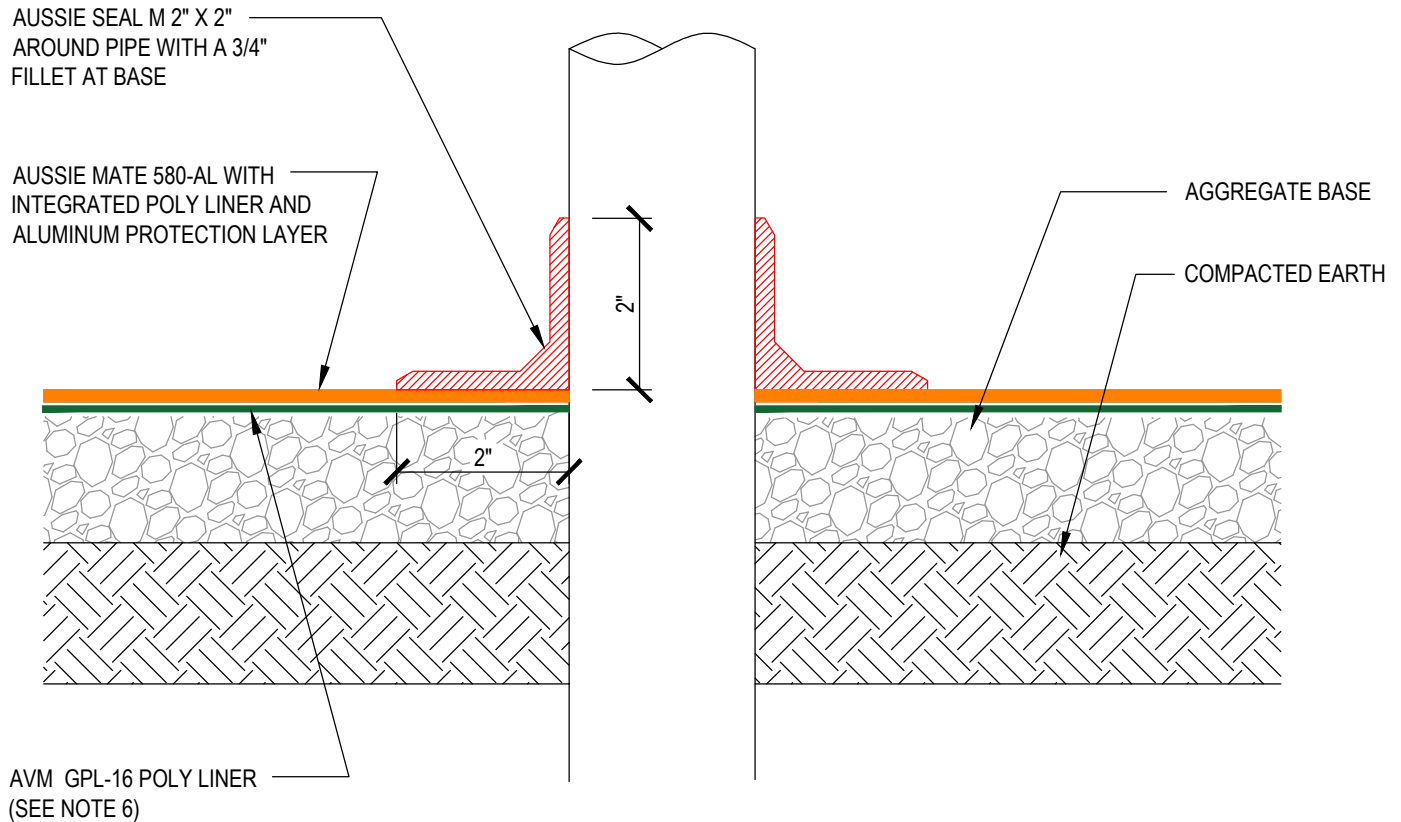
1. Aussie Mate 580-AL is an LARR approved Waterproofing membrane and Methane Barrier.
2. Aussie Mate 580-AL is a UV stable, heavy duty bituminous sheet membrane with aluminum protection layer for Below-Grade waterproofing applications and is available in a 60 mil or 80 mil thickness . Aussie Mate 580-AL may also be used as a methane and/or vapor barrier under horizontal slabs on grade.
3. All Aussie Mate overlaps must be minimum 2-1/2" - See "Lapping Details" for more information
4. When installed under slab do not remove integrated poly liner (release liner).
5. Shown without protection. Consult with Methane Engineer for membrane protection requirements.
6. Aussie Membrane 520 must be cured prior to concrete placement, which may take up to 72 hours. Please consult AVM if scheduling does not allow this.
7. GPL-16 is recommended for crushed rock or irregular substrates and is not needed for compacted earth substrates.

DETAIL #:
0580-AL-6712-M
System:
Aussie Mate 580-AL Methane

Vertical Pipe Penetration



AVM AUSSIE MATE 580-AL
METHANE / VOC BARRIER ONLY



INSTALL AUSSIE MATE 580-AL WITH ALUMINUM SIDE FACING INSTALLER

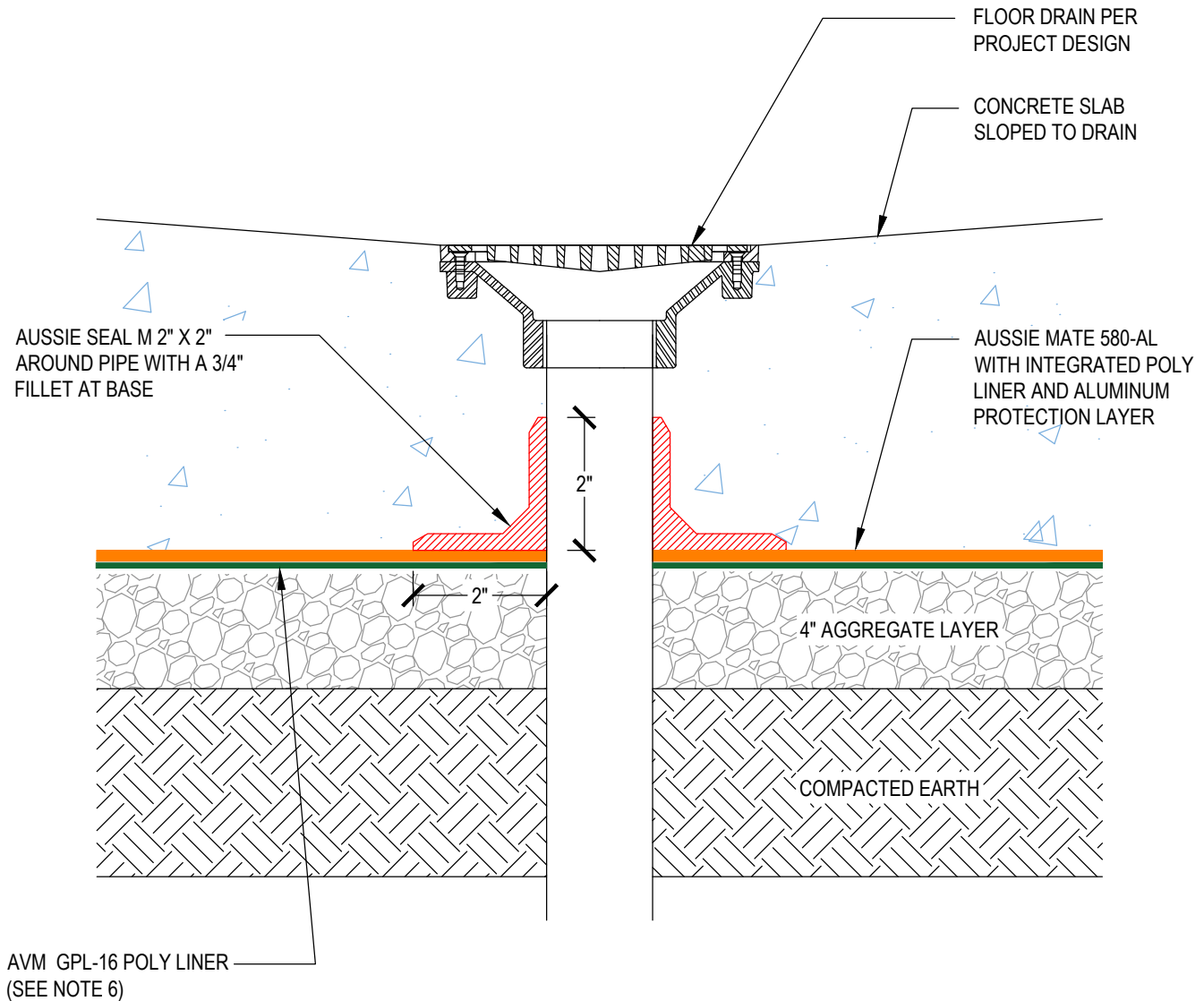
Notes:

1. Aussie Mate 580-AL is an LARR approved Waterproofing membrane and Methane Barrier.
2. Aussie Mate 580-AL is a UV stable, heavy duty bituminous sheet membrane with aluminum protection layer for Below-Grade waterproofing applications and is available in a 60 mil or 80 mil thickness . Aussie Mate 580-AL may also be used as a methane and/or vapor barrier under horizontal slabs on grade.
3. All Aussie Mate overlaps must be minimum 2-1/2\" - See "Lapping Details" for more information
4. When installed under slab do not remove integrated poly liner (release liner).
5. Shown without protection. Consult with Methane Engineer for membrane protection requirements.
6. GPL-16 is recommended for crushed rock or irregular substrates and is not needed for compacted earth substrates.

DETAIL #:
0580-AL-6714-M
System:
Aussie Mate 580-AL Methane

Typical Floor Drain

AVM AUSSIE MATE 580-AL
METHANE / VOC BARRIER ONLY



INSTALL AUSSIE MATE 580-AL WITH ALUMINUM SIDE FACING INSTALLER

Notes:

1. Aussie Mate 580-AL is an LARR approved Waterproofing membrane and Methane Barrier.
2. Aussie Mate 580-AL is a UV stable, heavy duty bituminous sheet membrane with aluminum protection layer for Below-Grade waterproofing applications and is available in a 60 mil or 80 mil thickness . Aussie Mate 580-AL may also be used as a methane and/or vapor barrier under horizontal slabs on grade.
3. All Aussie Mate overlaps must be minimum 2-1/2" - See "Lapping Details" for more information
4. When installed under slab do not remove integrated poly liner (release liner).
5. Shown without protection. Consult with Methane Engineer for membrane protection requirements.
6. GPL-16 is recommended for crushed rock or irregular substrates and is not needed for compacted earth substrates.

DETAIL #:
0580-AL-7002-M

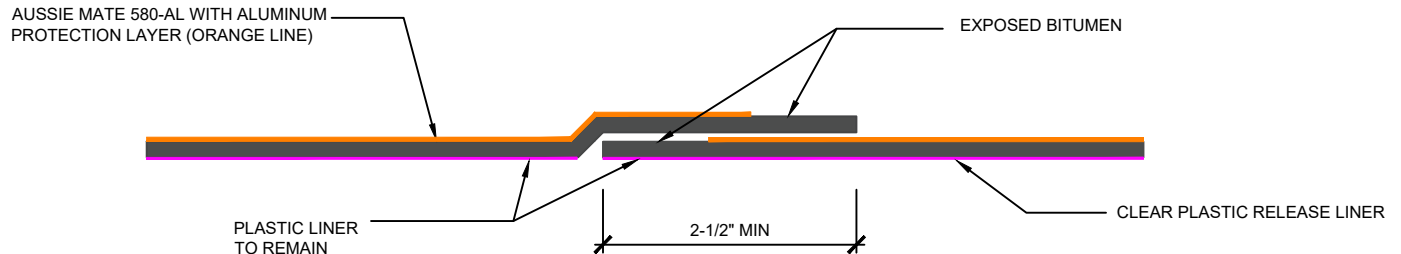
Aussie Mate 580-AL Methane

Standard Overlap

AVM AUSSIE MATE 580-AL
METHANE / VOC BARRIER ONLY



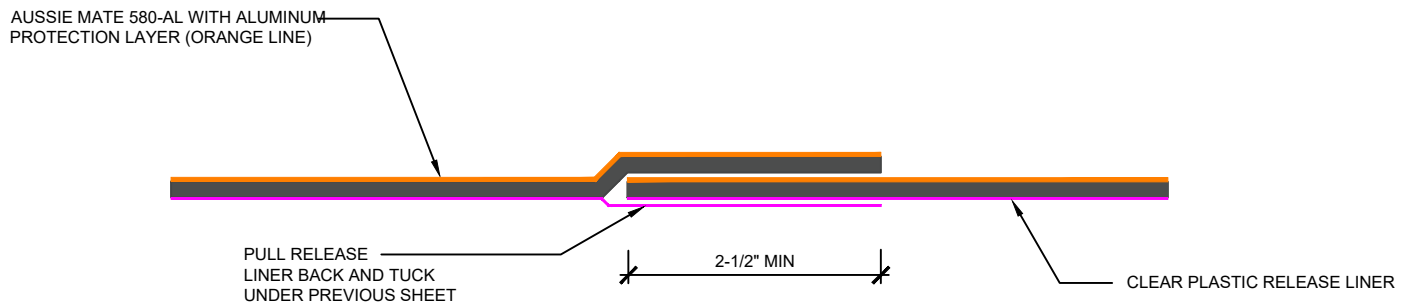
FACTORY LAP



Important Note: When installing the "Factory Lap", The Installation procedure should be as follows:

1. Before bonding the next layer of Aussie Mate 580-AL to an existing layer, Remove both clear plastic films from the factory laps (Where the aluminum protection layer ends and the 2-1/2" release liner on the bitumen side of the 2nd sheet)
2. Make sure surfaces are clean before bonding overlaps.
4. Install the next sheet of Aussie Mate 580-AL with a minimum 2-1/2" overlap.
5. Roll the steel roller over the lap several times while applying pressure to ensure proper adhesion.
6. In cold weather, using heat gun will improve adhesion.

NON-FACTORY LAP



Important Note: When installing the "Non-Factory Lap", The Installation procedure should be as follows:

1. Make sure surfaces are clean before bonding overlaps.
2. Pull release liner back and tuck under previous sheet - Do not remove plastic liners
3. Install the next sheet of Aussie Mate 580-AL with a minimum 2-1/2" overlap.
4. Roll the steel roller over the lap several times while applying pressure to ensure proper adhesion.
5. In cold weather, using heat gun will improve adhesion.
6. In the water-table, on non-factory laps Apply Sealant (Aussie Seal M) over the seam.

NOTES:

1. Aussie Mate 580-AL is an LARR approved Waterproofing membrane and Methane Barrier.
2. Aussie Mate 580-AL is a UV stable, heavy duty bituminous sheet membrane with aluminum protection layer for Below-Grade waterproofing applications and is available in a 60 mil or 80 mil thickness.
3. Aussie Mate 580-AL may also be used as a methane and/or vapor barrier under horizontal slabs on grade.