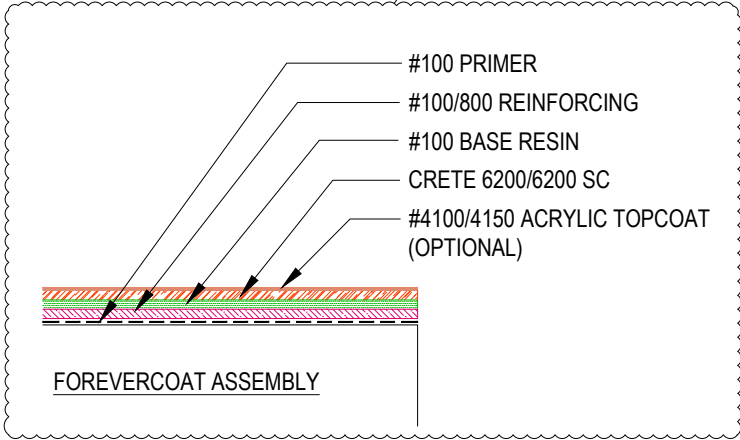
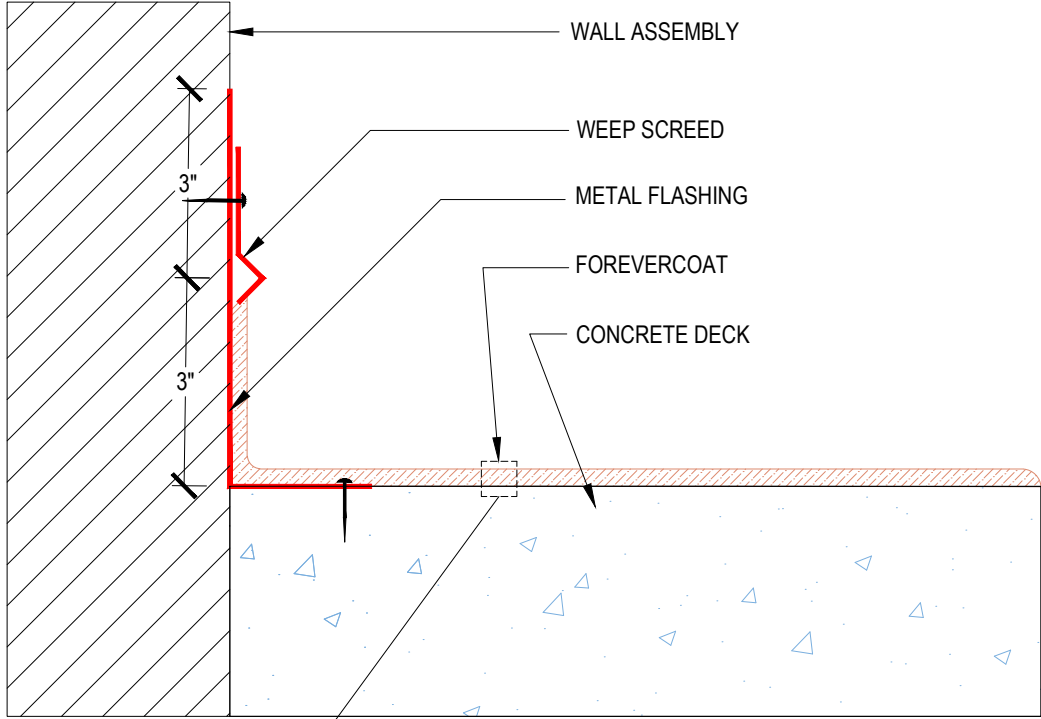


DETAIL #:
0100-FEC-002-C-CS
 AVM System 100
Forevercoat

**Standard Assembly
 Over Concrete Substrate
 AVM System 100 Forevercoat**



Notes:

1. Edge metals at deck edge of concrete decks is not required
2. Extend deck coating layers (primer, membrane, texture, and sealer) to the slab edge
3. If edge metals are installed on slab edges, contact AVM for details
4. L Metal to extend above top of screed
5. See application instructions for full system recommendations and requirements.