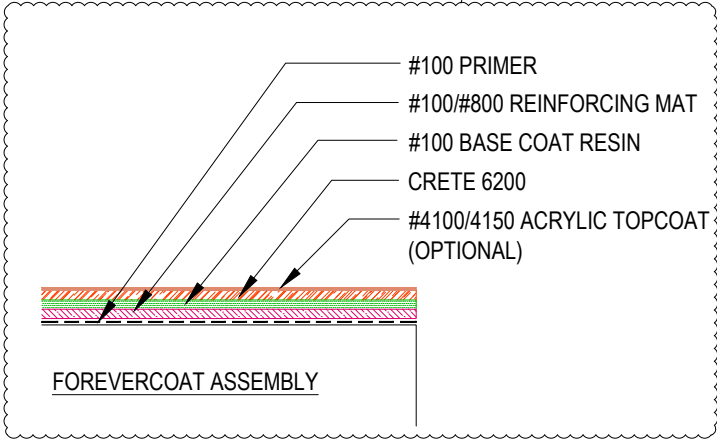
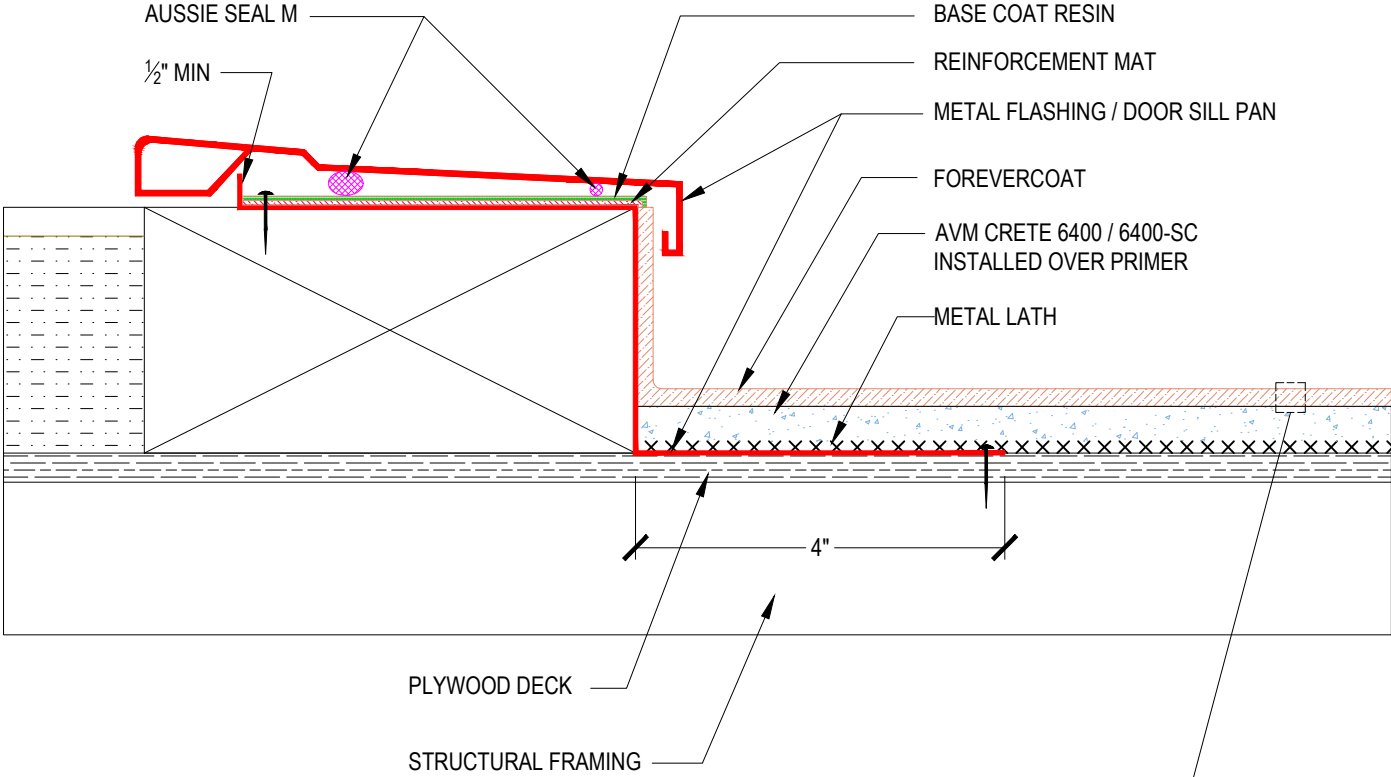


DETAIL #:
 0100-FEC-642-P-CS
 AVM System 100
 Forevercoat

Threshold Over Plywood Substrate

AVM System 100 Forevercoat



Notes:

1. Extend reinforcing mat and base coat resin to back edge of sheet metal flashing
2. Membrane to be bonded to sheet metal edge
3. AVM Crete 6400 - #400 Aggregate with 7400 Additive.
4. See application instructions for full system recommendations and requirements.