



ICC ESR-2125
CAL-FIRE:
8110-2336:0501

Forevercoat® 100-CF Cal-Fire Approved Maintenance-Free Deck Coating



Sections 071800 / 071813
Fluid Applied Waterproofing

Product Name

Forevercoat® 100-CF

A "Maintenance Free Deck Coating" for new deck coating installations

Manufactured by

AVM Industries, Inc.
8245 Remmet Ave, Canoga Park, CA 91304
888.414.1041 818.888.0050
www.avmindustries.com

Product Description

The **Forevercoat 100-CF** is a Maintenance-Free, Cal-Fire Approved traffic bearing, roof and walking deck waterproofing system. The **Forevercoat 100-CF** system has a class A roofing classification, a 1-hour fire rating and is also approved to be used on decks requiring a Cal-Fire approval for Decking for Wildland Urban Interface (W.U.I.) (when installed in accordance with ICC ESR-2125 and per AVM's Forevercoat® 100-CF (Cal-Fire) Installation Instructions)

Where to Use

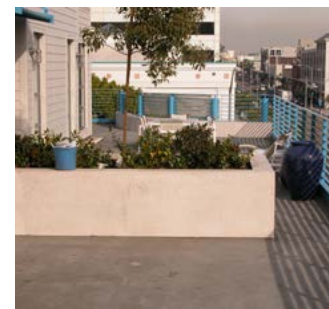
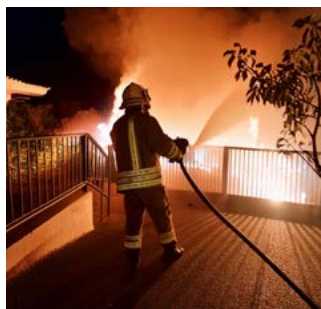
On new or existing concrete or plywood decks and many other substrates. (For other substrates, consult with AVM Industries prior to installation) The **Forevercoat 100-CF** system provides exceptional protection against the elements and heavy pedestrian traffic. The **Forevercoat 100-CF** is suitable for both residential and commercial structures and is commonly installed on sundecks, balconies, walkways, stairs, court-yards and many other areas.

Warranty

- The **Forevercoat 100-CF** system components are manufactured to the strictest quality control standards. The manufacturing and quality control procedures are monitored by an independent lab certified to conduct such inspections by ICC-ES.
- AVM Industries will warranty the installed system for a period of five (5) years. A ten (10) year warranty is available. For details, consult your distributor or approved AVM Industries applicator. Complete warranty information is available upon request.

Delivery, Storage, and Handling

- Delivery of all the **Forevercoat 100-CF** system materials to the job site must be in their original sealed containers and bags, with manufacturer's name and label intact.
- Handle and store containers and bags in accordance with printed instructions.
- Store at temperatures between 50°F and 90°F. Do not store materials in direct sunlight or where they may be damaged by water or rain. Bags must be kept dry!



- Keep all materials out of the reach of children.
- If irritation occurs during use, liberally flush affected areas with water. If irritation continues, see a physician immediately.

Project Conditions

- Do not apply materials at temperatures below 50°F, or if precipitation is imminent, or above 90°F if applying in direct sun light.
- Provide adequate ventilation during installation.
- Warn personnel against hazards of materials to skin and eyes.
- Protect adjacent surfaces which could be damaged during the application.
- This system must not be used to cover Expansion Joints.

System Application

Install the **Forevercoat 100-CF** in accordance with its Installation Instructions.

Substrates

Plywood must be min 5/8" thick, exterior grade, attached to framing spaced max 16" on center and properly blocked, supported and fastened.

Concrete decks must comply to code and be min 2000 PSI after 28 days curing time.

Preparation of Substrates

The substrate surfaces must be structurally sound, clean, dry, free of contamination, and prepared according to the Installation Instructions.

Installation

Refer to coverage charts and specifications on the other side.

- Over plywood substrates only: Install AVM Crete 6400-SC a min 1/4" thick per the **Forevercoat 100-CF** installation instructions.
- Install the **Forevercoat** waterproofing membrane as follows:
- Patch all cracks, voids, etc, using AVM Acripatch 5020.

- Primer: (Optional) Apply Primer 100 to all surfaces. For better bonding, upgrade to the AVM Epoxy Primer 401 or 420.
- Laminate the fiberglass mat with AVM Base Resin 100.
- Trowel two thin coats (1/16" thick each) of the AVM Crete 6200 to all surfaces. (Min total thickness 1/8")
- Optional. Apply the AVM Top Coat Sealer 4150 to all surfaces.

Quality Control

- Visually inspect all coated surfaces to ensure a full and proper coating application, especially at corners, drainage scuppers and hard-to-reach areas.
- All unsatisfactory areas shall be repaired prior to final acceptance.

Protection of Installed Work

The completed section shall be protected from all pedestrian traffic for the first 24 hours after application and until the surface is sufficiently cured. (The amount of drying time may vary depending on temperature and humidity conditions) Typically, light foot traffic may resume after 4-6 hours.

Clean Up

Tools may be cleaned with water before resins are dry.

Maintenance

Cleaning and washing of the decks should be performed on a regular basis. No re-coatings are required! For cleaning information, refer to the **Forevercoat** maintenance instructions.

Availability and Cost

Contact AVM Industries or your approved applicator for pricing and availability.

Technical Services

Technical services are available by contacting our offices at: **888.414.1041** or **818.888.0050** or visit **www.avmindustries.com**

System Specifications

See next page.

The following coverages are based on controlled tests. Actual coverages may vary.

Materials	One Kit Makes	One Kit Covers at 1/8" Thick	One Kit Covers at 1/4" Thick	One Kit Covers at 1/2" Thick
AVM Crete 6400-SC	4 Gallons of Mixed Product	40 Square Feet	20 Square Feet	10 Square Feet
AVM Crete 6200	4 Gallons of Mixed Product	35-50 Square Feet	NA	NA
Weights of 1 sq. ft. of Crete 6200/6400-SC installed & cured		1 sq. ft. at 1/8" thick = -1.25 lbs.	1 sq. ft. at 1/4" thick = -2.50 lbs.	1 sq. ft. at 1/2" thick = -5.00 lbs.

Materials	Over Plywood	Over Concrete	Over Sheet Metal
AVM Primer 100 / Optional AVM Epoxy Primer 401 or 420	200-300 sq. ft./gal.	200-300 sq. ft./gal.	200-300 sq. ft./gal.
AVM Base Resin 100	40-50 sq. ft./gal.	40-50 sq. ft./gal.	40-50 sq. ft./gal.
AVM Mat 100	Allow 5%-10% waste	Allow 5%-10% waste	Allow 5%-10% waste
Optional: AVM Top Coat Sealer 4150 Clear	100-150 sq. ft./gal.	100-150 sq. ft./gal.	100-150 sq. ft./gal.

Technical Data - Forevercoat 100-CF	
Fire Rating	Class A, 1-Hour, CAL-Fire
Weatherometer	No Cracking, Softening, Crazing
Wind Uplift (Tested Approved)	135+ lbs./sq.ft., -227 MPH/90MPH
Water absorption ASTM D570	With vs Without Top-Coat Sealer: Less than 1%
Chemical Resistance (7 Chemicals)	Without Top-Coat Sealer: No Change With Top-Coat Sealer: No Change
Bond Strength to Plywood	Control: 86 PSI (Cohesive Failure) After Aging: 88 PSI (Cohesive Failure) After Freeze Thaw: 83 PSI (Cohesive Failure)
Compressive Strength ASTM C39,C172,C192,C470 @ 28 Days	Crete 6400: 3700 PSI Crete 6400-SC: 2500 PSI
Impact Resistance ASTM D-3746	No Cracking or Splits

General Data - Forevercoat 100-CF	
Shelf Life: (Liquids)	One year in original unopened packaging
Storage Conditions	Store dry at 50°F-90°F. If frozen, discard
Crete 6400-SC Mixing	1 bag AVM 400-SC with 1.0 gal. water
Crete 6200 Mixing	1 bag AVM 200 with 1.25 gal. Additive 7400
Crete 6200 Colors	STD: Gray Cement or White Cement
Crete 6200 Custom Colors	See AVM's Color Chart - Call AVM for details
Top-Coat Sealer Colors	Clear Sealer or See AVM's Color Chart

Minimum Dry Thickness - Complete System: 0.310. (AVM Crete 6400 must be at least 0.250" thick when dry)

Item / Component	Packaging	Approx. Shipping Weights	VOC
AVM AcriPatch 5020	2.0/5.0 gal. pails	2.0/5.0 gal. 15/39 lbs.	46 Grams/Liter
AVM Aggregate 200	50 lb. bag	50 lbs./bag	
AVM Aggregate 400-SC	50 lb. bag	50 lbs./bag	
AVM Additive 7400	2.0/5.0 gal. pails	2.0/5.0 gal. 18/46 lbs.	6 Grams/Liter
AVM Metal Lath 2.5#	10 sheets/bundle	5 lbs./sheet	
AVM Mat 100	1750 sq. ft roll	82.1 lbs.	
AVM Primer 100	2.0/5.0 gal. pails	2.0/5.0 gal. 18/46 lbs.	93 Grams/Liter
AVM Epoxy Primer 401 or 420	2.0 gal. kit / 2.4 gal. kit	26 lbs. / 26 lbs.	90 g/L / 0 g/L
AVM Base 100	2.0/5.0 gal. pails	2.0/5.0 gal. 18/46 lbs.	85 Grams/Liter
AVM Top Coat 4150	2.0/5.0 gal. pails	19/47 lbs.	85/73 Grams/Liter

For a complete list of details in CAD or PDF, please visit our website at www.avmindustries.com.

AVM Industries, Inc.
8245 Remmet Ave, Canoga Park, CA 91304
888.414.1041 818.888.0050

Quality Waterproofing Products



www.avmindustries.com