



AVM System 700 Waterproofing Membrane Under-Tile Waterproofing and Anti-Fracture Membrane

ICC ESR-2662
ICC PMG-2662
LARR 25431

Sections 071000 / 071400 / 071416 /
093000 / 093400
Fluid-Applied Waterproofing

Product Name

AVM System 700

Manufactured by

AVM Industries, Inc.
8245 Remmet Ave, Canoga Park, CA 91304
888.414.1041 818.888.0050
www.avmindustries.com

Product Description

AVM System 700 is a monolithic waterproofing membrane 25 Mils min thickness, (approx 1/32nd of an inch thick) consisting of a heavy duty reinforced polyester fabric embedded in acrylic waterproofing paste. AVM System 700 is designed to be used as a waterproofing and Anti-Fracture membrane for substrates which will have Tile, Brick, Slate, Pavers or other similar finished surfaces installed directly over it. (Thin-Set may be applied directly on top of the AVM System 700) This system is also design to waterproof shower pans, counter-tops, etc.

Where to Use

On new or existing concrete or plywood decks, over backer boards, cement boards and other similar substrates. May be used as a primary membrane over living spaces! May also be used as a shower pan liner for showers, bathrooms, kitchens, ponds, wet rooms, etc.

Warranty

AVM Industries will warranty the system materials for a period of one (1) year in their original, sealed containers. AVM Industries will warranty the installed system for a period of five (5) years. A ten (10) year warranty is also available. For details, contact AVM Industries or consult with your applicator.

Delivery, Storage, and Handling

- Delivery of all the AVM System 700 materials to the job site must be in their original sealed containers and bags, with manufacturer's name and label intact.
- Handle and store containers and bags in accordance with printed instructions.
- Store at temperatures between 50°F and 90°F. Do not store materials in direct sunlight or where they may be damaged by water or rain. Bags must be kept dry!
- Keep all materials out of the reach of children.
- If irritation occurs during use, liberally flush affected areas with water. If irritation continues, see a physician immediately.



Project Conditions

- Do not apply materials at temperatures below 50°F, or if precipitation is imminent, or above 90°F if applying in direct sun light. Do not apply materials anywhere at temperatures above 100°F.
- Warn personnel against hazards of materials to skin and eyes. Note other hazardous conditions on the job that might require special protective gear and or any other special protective or safety procedures.
- Protect adjacent surfaces which could be damaged during the application procedure.
- This system must not be used to cover Expansion Joints.

System Application

Read the AVM System 700 Installation Instructions Prior to Installation.

Preparation

(Optional, but highly recommended) AVM Crete 6200 - Scratch Coat (Over Concrete Substrates) or a 1 inch thick, reinforced mortar bed over plywood substrates. (Min 2000 PSI)

Membrane Installation

Membrane 700

Install a 6 inch wide membrane strip at deck perimeters, joints, cracks, sheet metals, drains, scuppers, posts, door ways, entry ways, etc. Use a wider strip if the 6" strip will not provide adequate waterproofing protection. Install the AVM Membrane 700 to all the remaining surfaces with a minimum 2 inch overlap at the seams and completely overlapping the 6 inch strip.

Protective Coating

Optional with the following exception: Required when membrane is installed directly to plywood substrates.

Protective Layer: Apply the AVM Crete 6200 over the cured membrane 700 at least 1/16 of an inch thick.

Quality Control

- Visually inspect all coated surfaces to ensure a full and proper coating application, especially at corners, drainage scuppers and hard-to-reach areas.
- All unsatisfactory areas shall be repaired prior to final acceptance.

Protection of Installed Work

- The completed section shall be protected from all pedestrian traffic for the first 24 hours after application and until the surface is sufficiently cured. (The amount of drying time may vary depending on temperature and humidity conditions) Typically, light foot traffic may resume after 4-6 hours.
- The completed section shall be protected from heavy pedestrian and wheeled traffic for the first 24 hours after application.

Availability and Cost

Contact AVM Industries or your approved applicator for pricing and availability.

Technical Services

Technical services are available by contacting our offices at: **888.414.1041** or **818.888.0050** or visit **www.avmindustries.com**

System Specifications

See next page.

The following coverages are based on controlled tests. Actual coverages may vary.

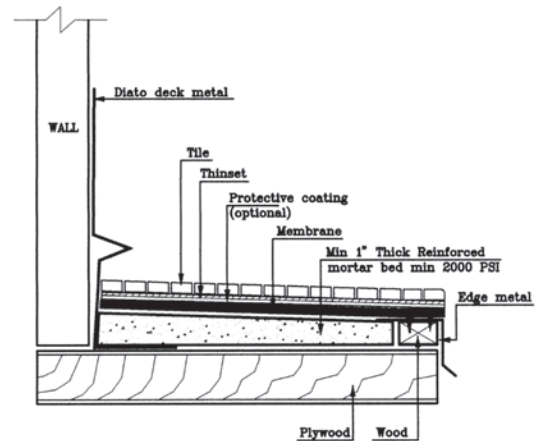
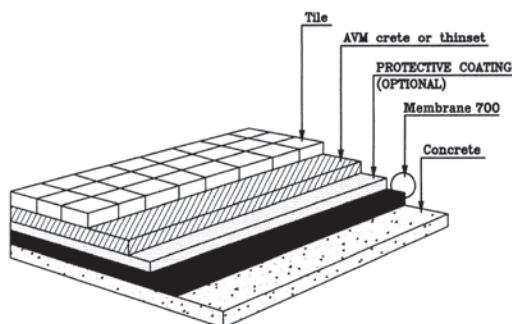
Materials	One Kit Makes	One Kit Covers at 1/16" Thick
AVM Crete 6200	4 Gallons of Mixed Product	80 sq. ft. at 1/16" thick
Weight of 1 sq. ft. of Crete 6200 installed & cured		1 sq. ft. at 1/16" thick = -0.625 lbs.

Materials	Over Plywood	Over Concrete	Over Sheet Metal
AVM Primer 100 (optional)	200-300 sq. ft./gal.	200-300 sq. ft./gal.	200-300 sq. ft./gal.
AVM Paste 700	40 sq. ft./gal.	40 sq. ft./gal.	40 sq. ft./gal.
AVM Matt 800 (6" and 40")	Min. 2" overlaps. Allow 5%-10% waste.		

Technical Data - AVM System 700	Over Concrete	Over Plywood
Fungus and Micro Organism Resistance	PASS	PASS
Seam Strength - ASTM D-751 (1989)	PASS	PASS
Breaking Strength - ASTM D-752 (1989)	PASS	PASS
Dimensional Stability - ASTM D1204	PASS	PASS
Waterproofness - ASTM D-4068	PASS	PASS
Shear Strength to Ceramic Tile and Cement Mortar after 100 Days Immersion - ASTM C-482	PASS	PASS

General Data - AVM System 700	
Shelf Life: (Liquids)	One year in original unopened packaging.
Storage Conditions	Store dry at 50°-90°F. If frozen, discard
Cement Mixing Ratio	1 50 lb. bag to 1.0-1.25 gal. additive 7400
Paste Color	Paste is Black
Additive Color	AVM Additive 7400 is Milky White
Protective Coating	AVM Crete 6200 is Gray
Protective Coating Strength	AVM Crete 6200 achieves over 3700 PSI when cured, providing excellent protection and bonding

Item / Component	Packaging	Approx Shipping Weights	VOC
AVM Primer 100	2.0/5.0 gal. pails	18.0/46.0 lbs	93 Grams/Liter
AVM Paste 700	3.5/5.0 gal. pails	33.5/46.0 lbs	82 Grams/Liter
AVM Aggregate 200	50 lb. bag	50 lb. bag	
AVM Additive 7400	5.0 gal. pails	46.0 lbs	6 Grams/Liter
Mat 800 40" wide x 324 Ft. Long	1080 sq. ft	27 lbs.	
Mat 800 6" wide x 300 Ft. Long	150 sq. ft	3 lbs	



For a complete list of details in CAD or PDF, please visit our website at www.avmindustries.com.

AVM Industries, Inc.
8245 Remmet Ave, Canoga Park, CA 91304
888.414.1041 818.888.0050

Quality Waterproofing Products



www.avmindustries.com