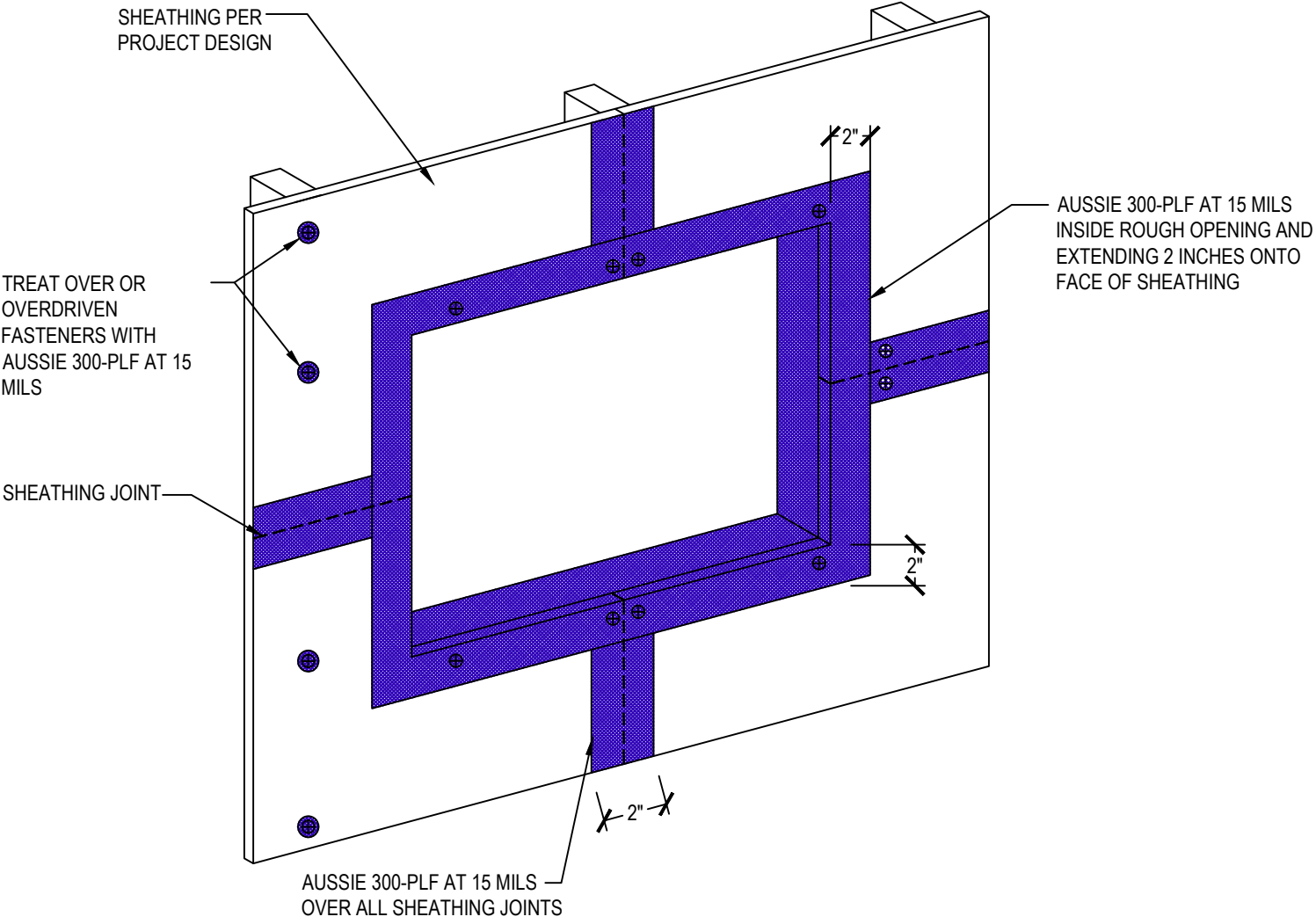


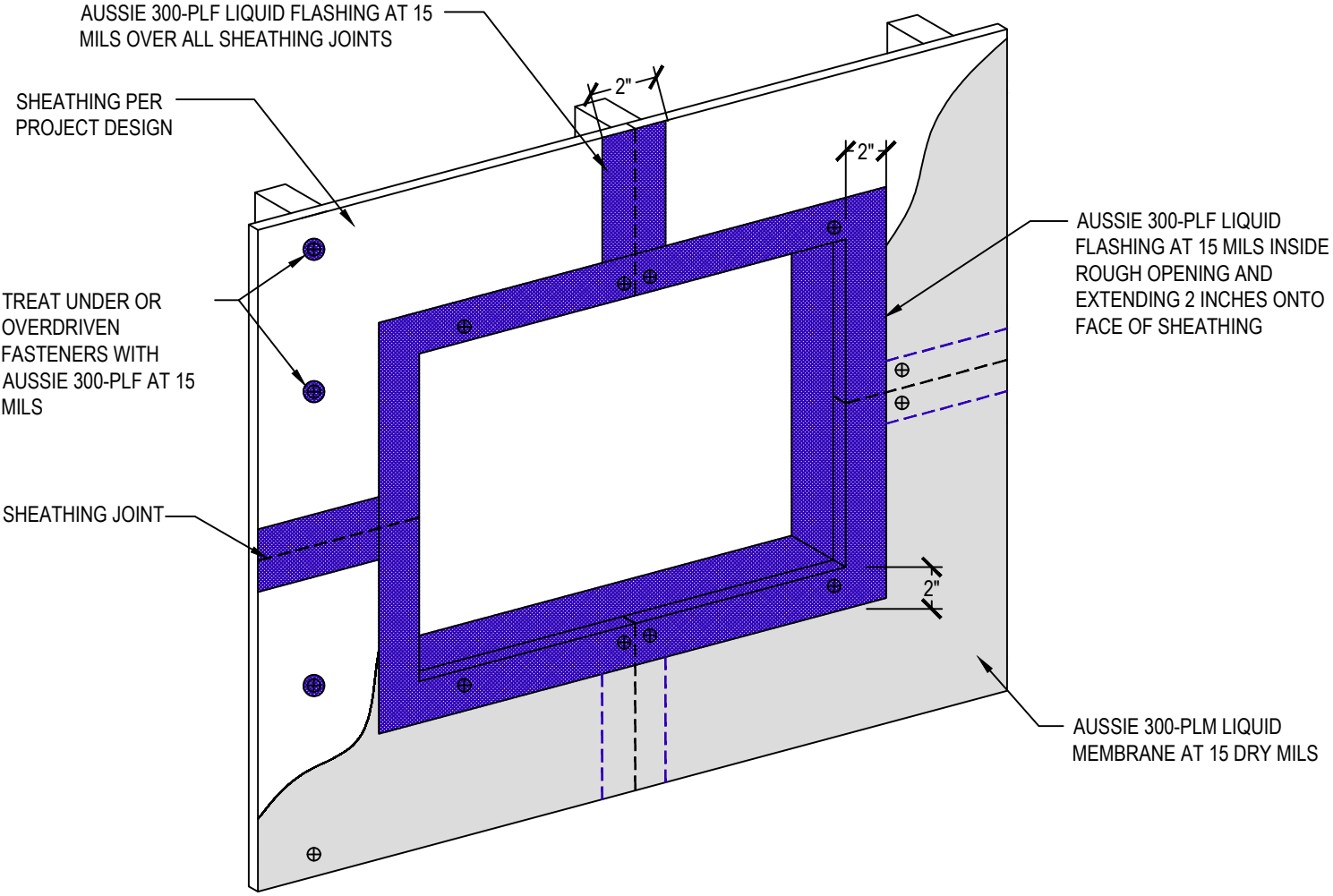
DETAIL #:
0300-PLM-1100.1
Aussie Shield 300-PLM

Typical Window Flashing Pre-Treatment with Aussie 300-PLF Aussie Shield 300-PLF



DETAIL #:
0300-PLM-1100.2
Aussie Shield 300-PLM

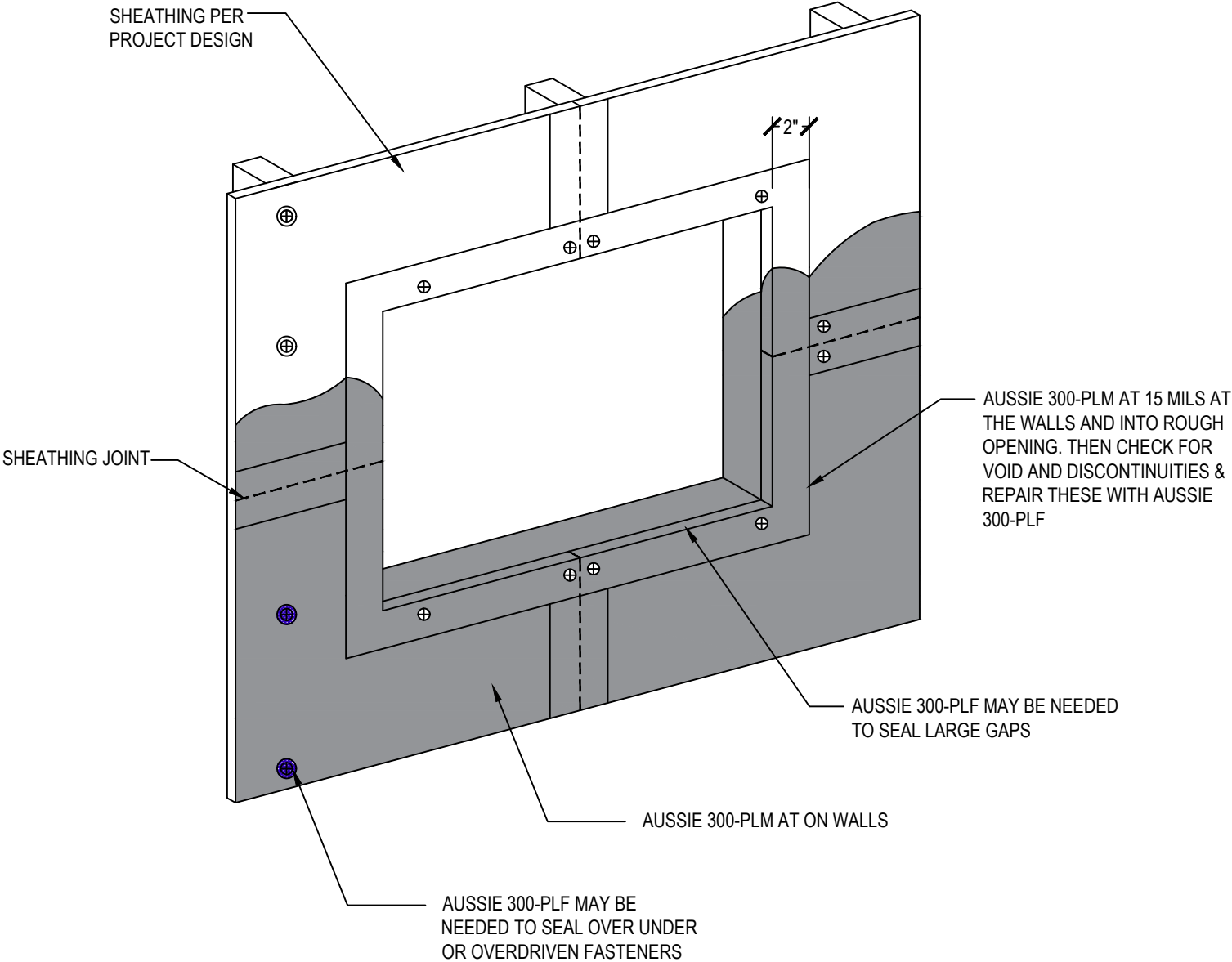
Typical Window Flashing Pre-Treatment, then 300-PLM Aussie Shield 300-PLM/PLF



DETAIL #:
0300-PLM-1100.3
Aussie Shield 300-PLM

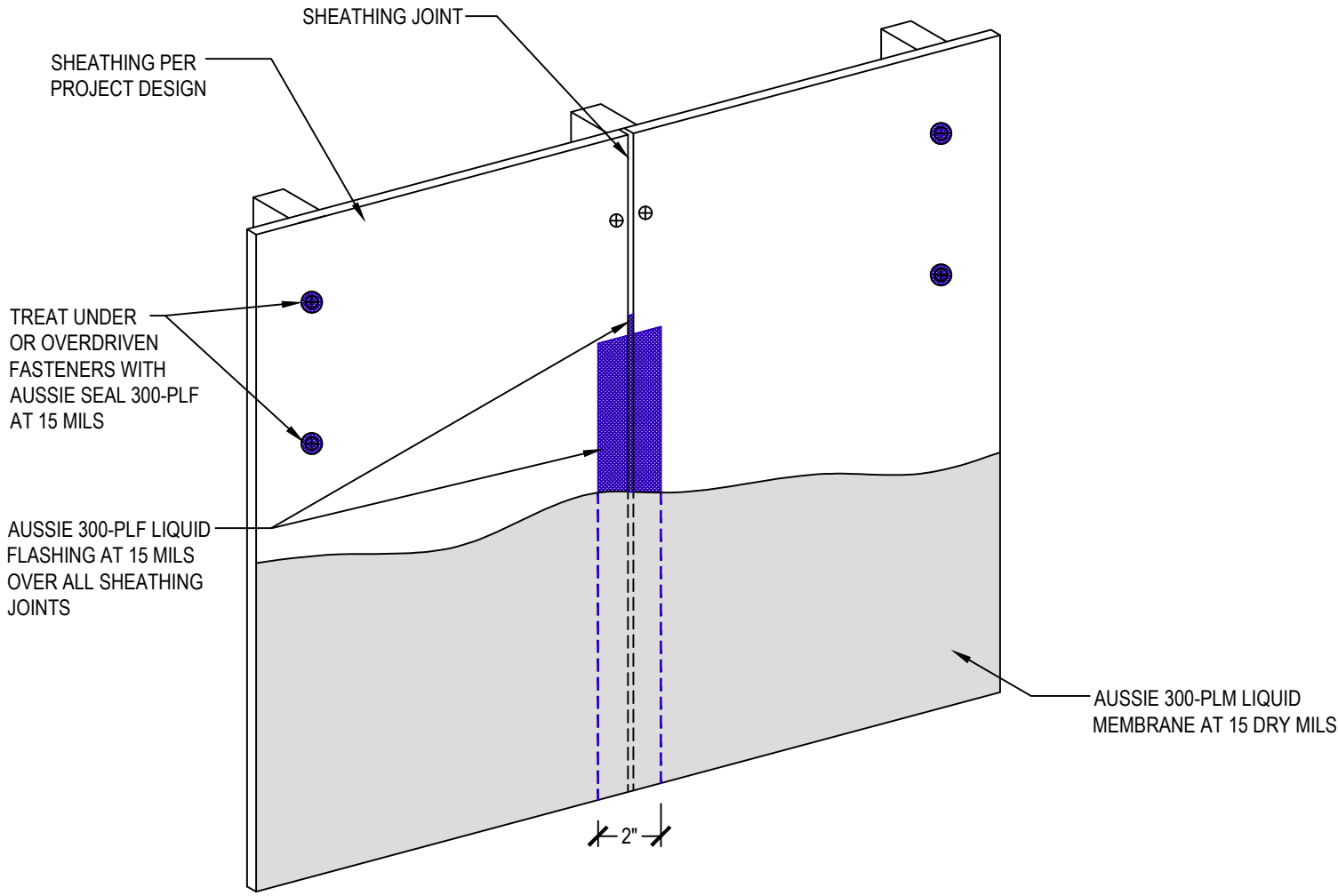
Typical Window Flashing Post Treatment

Aussie Shield 300-PLM



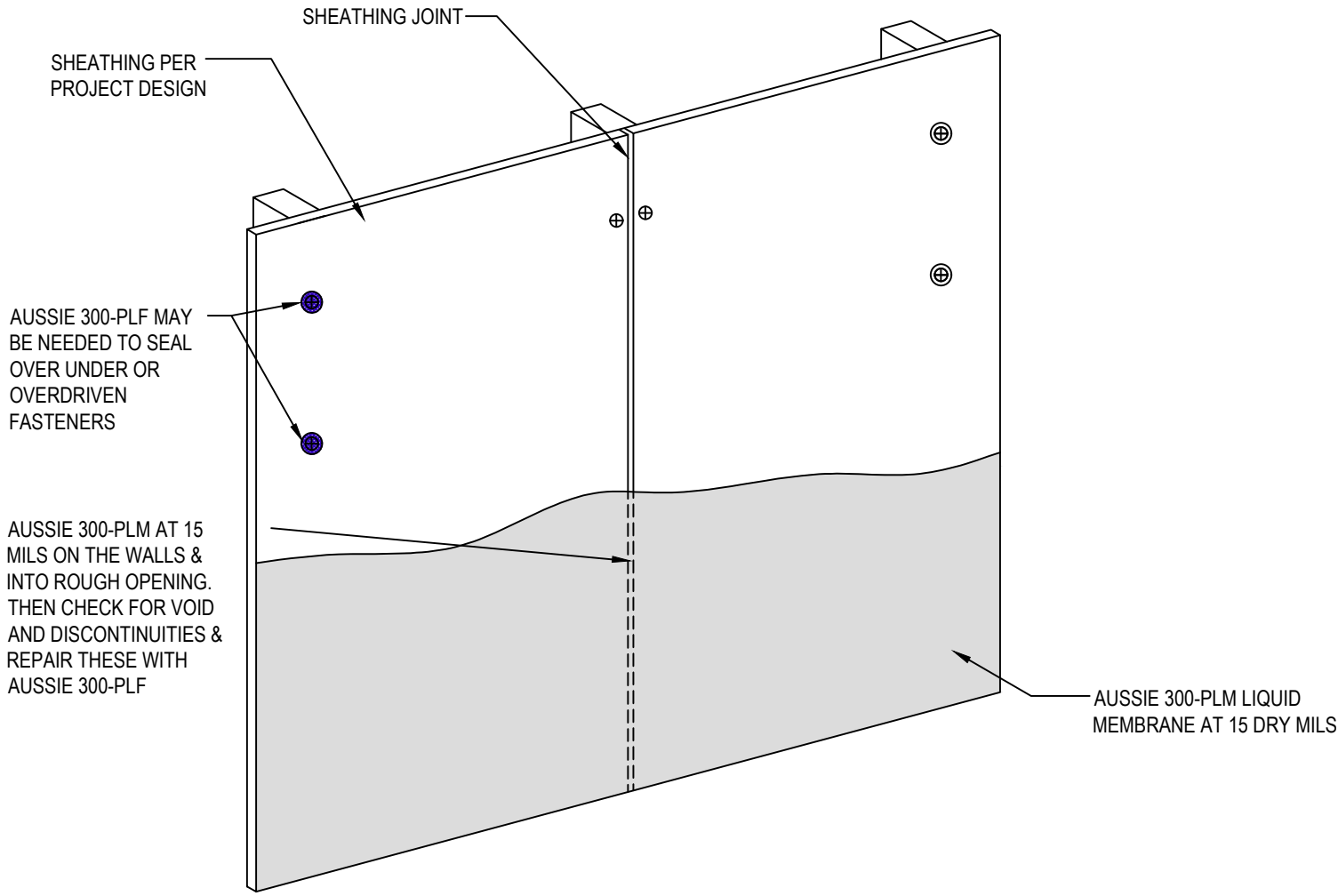
DETAIL #:
0300-PLM-1110.1
Aussie Shield 300-PLM

Sheathing Joint Detailing Pre-Treatment with 300-PLF Aussie Shield 300-PLM/PLF



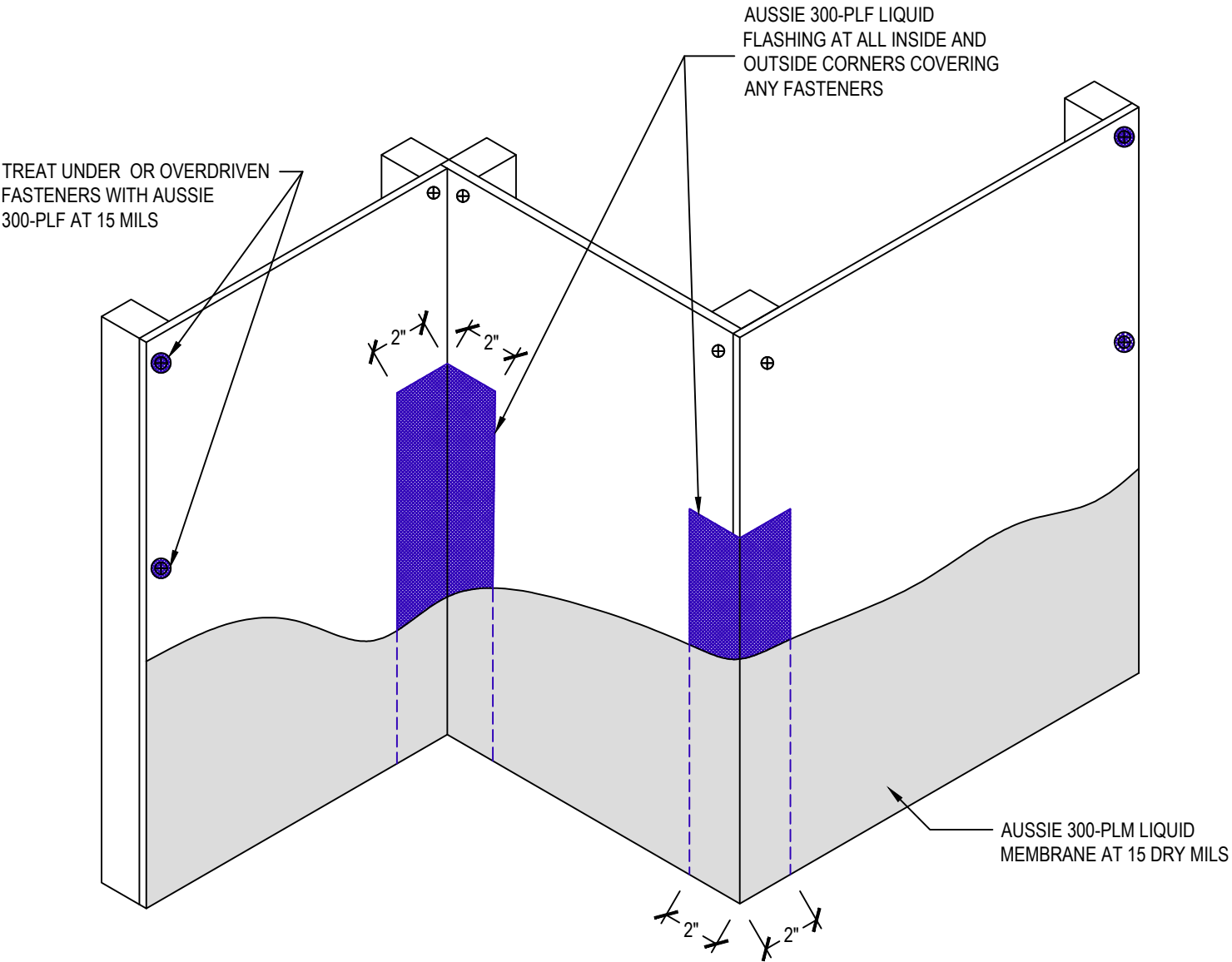
DETAIL #:
0300-PLM-1110.2
Aussie Shield 300-PLM

Sheathing Joint Detailing Post Treatment Aussie Shield 300-PLM



DETAIL #:
0300-PLM-1115.1
Aussie Shield 300-PLM

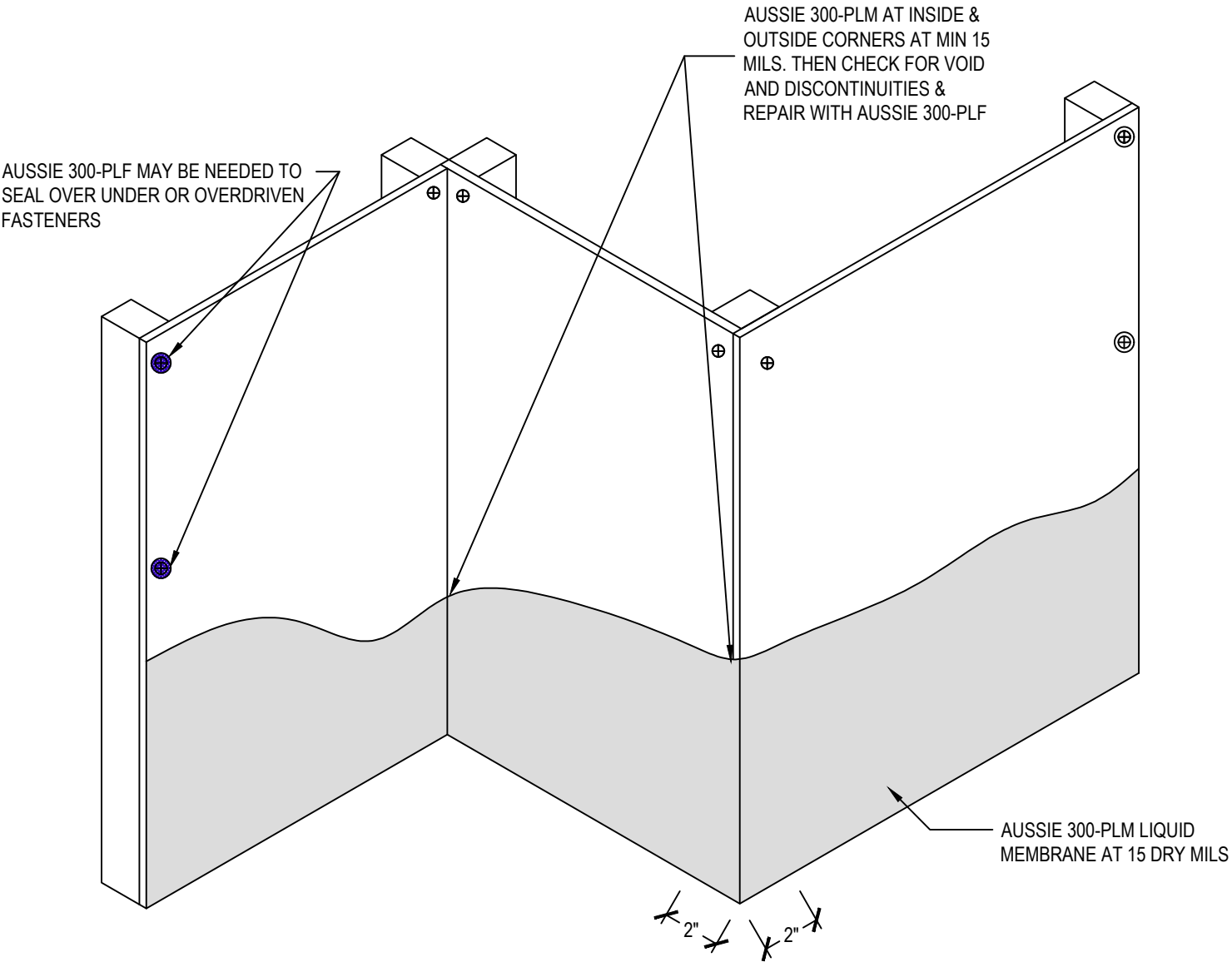
Inside and Outside Corners Pretreatment with 300-PLF Aussie Shield 300-PLM/PLF



DETAIL #:
0300-PLM-1115.2
Aussie Shield 300-PLM

Inside and Outside Corners Post Treatment

Aussie Shield 300-PLM



DETAIL #:
0300-PLM-1120
Aussie Shield 300-PLM

Typical Penetration

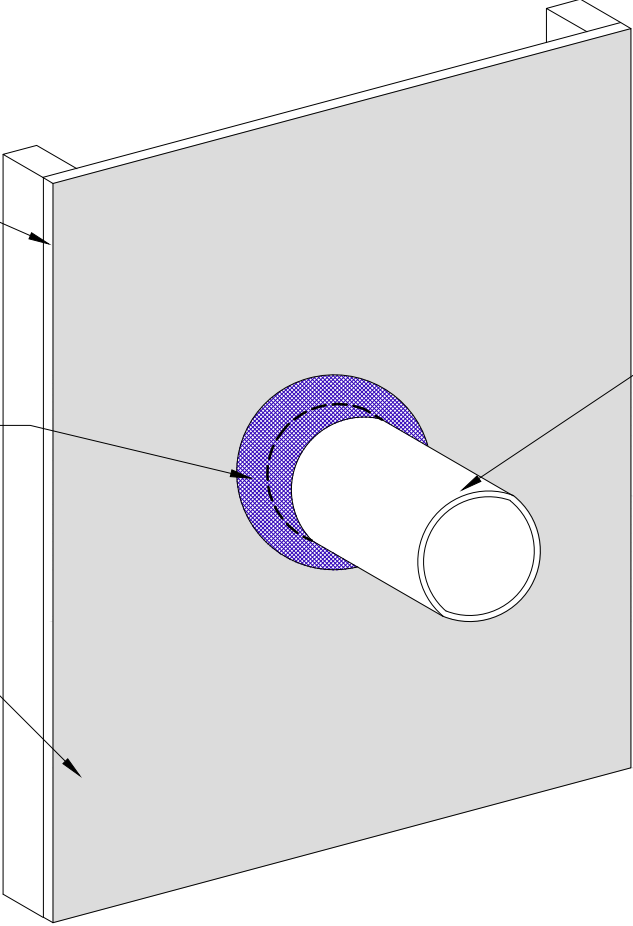
Aussie Shield 300-PLM



SHEATHING PER PROJECT DESIGN

AUSSIE 300-PLF LIQUID FLASHING AT 15 MILS EXTENDING 2" ONTO SHEATHING AND 2" UP THE PIPE

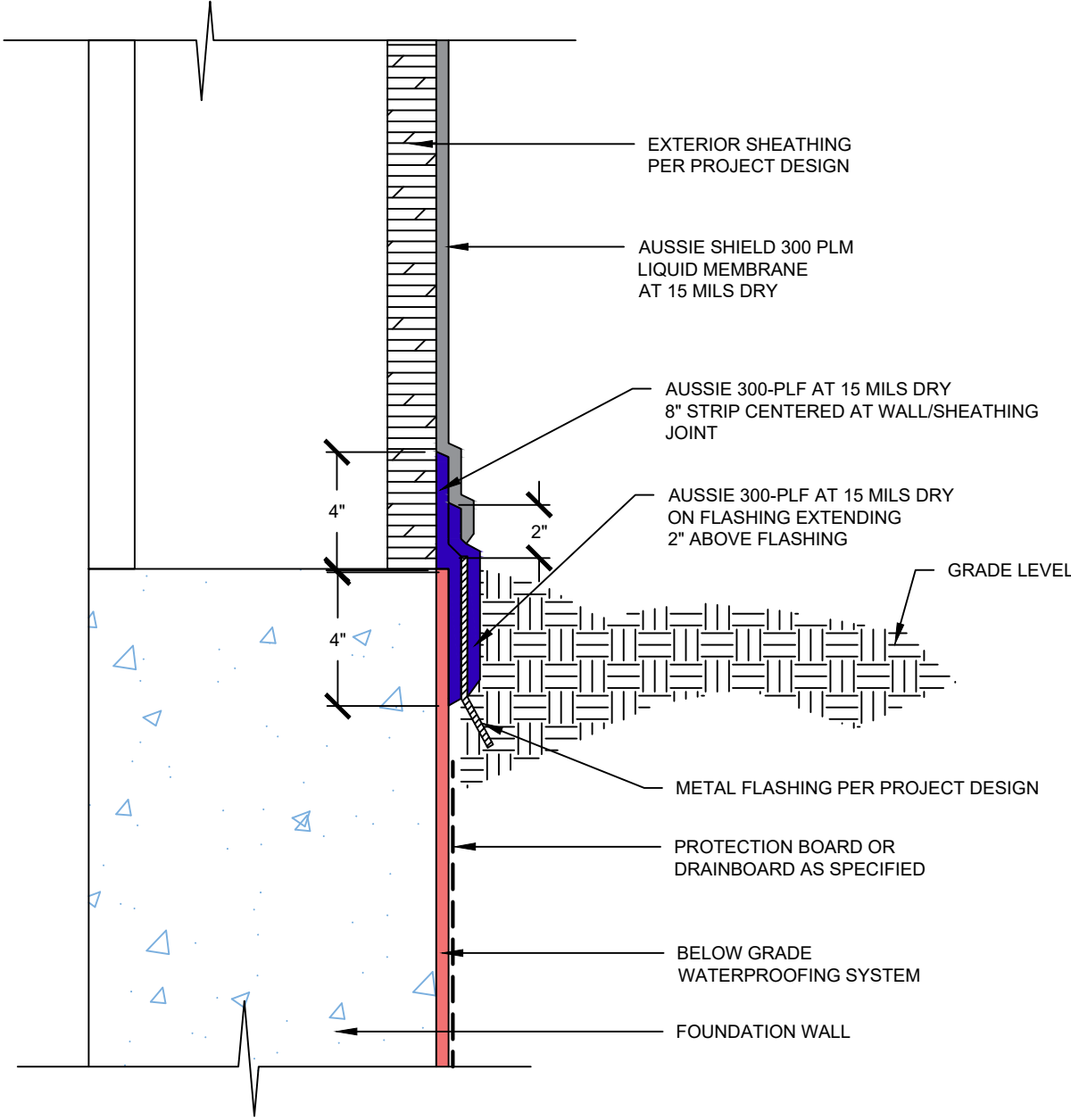
AUSSIE 300-PLM LIQUID MEMBRANE AT 15 DRY MILS



PIPE PENETRATION

DETAIL #:
0300-PLM-1125
Aussie Shield 300-PLM

Transition to Below-Grade Waterproofing - Flush Foundation Aussie Shield 300-PLM

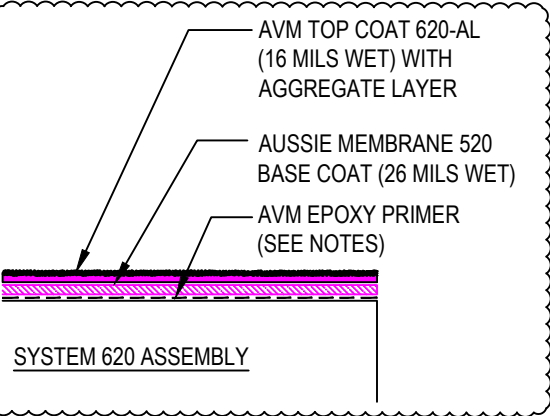
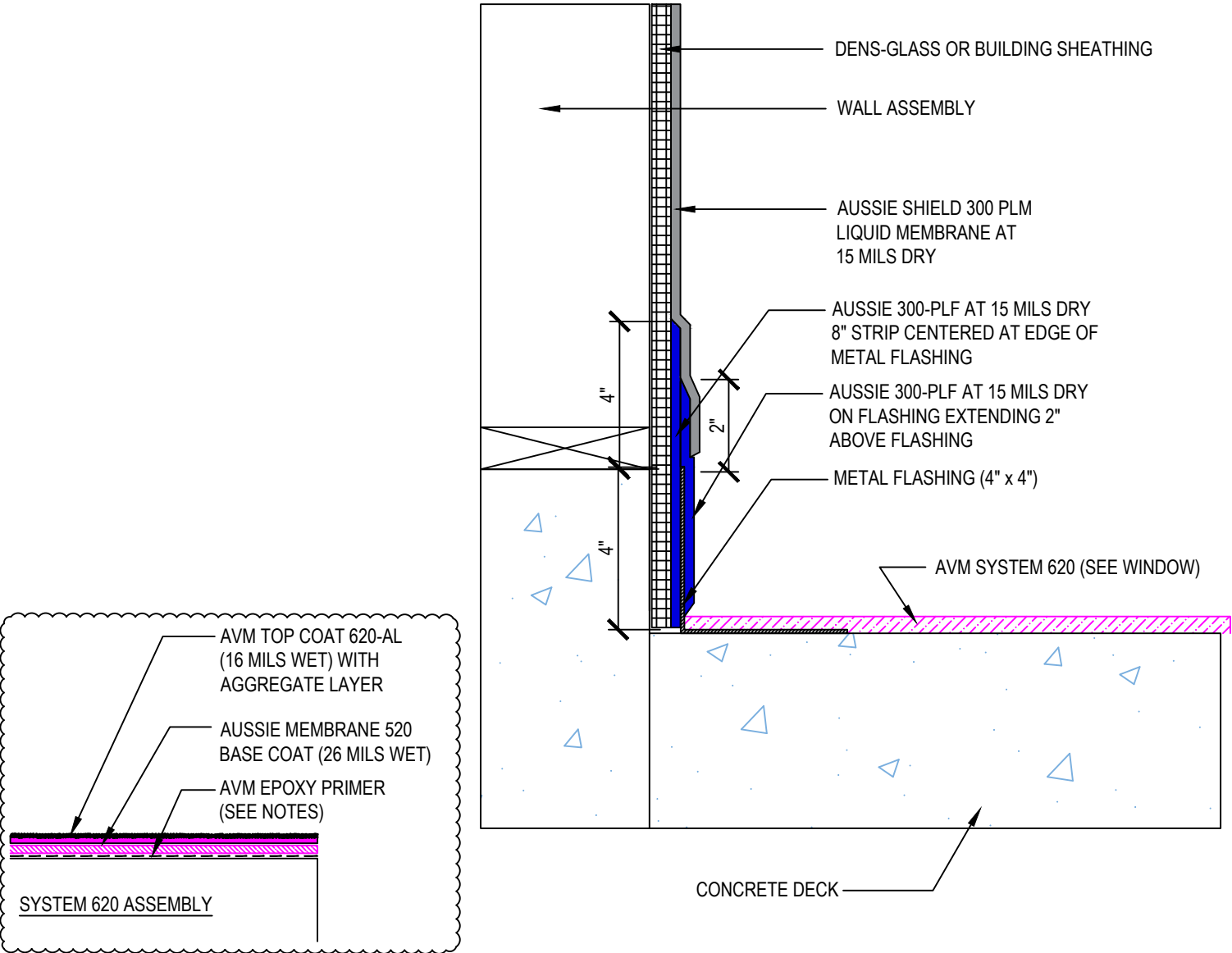


DETAIL #:
0300-PLM-1126
 AVM System 300 -PLM

Transition to AVM 620 Deck Coating with L Metal



AVM SYSTEM 300 PLM



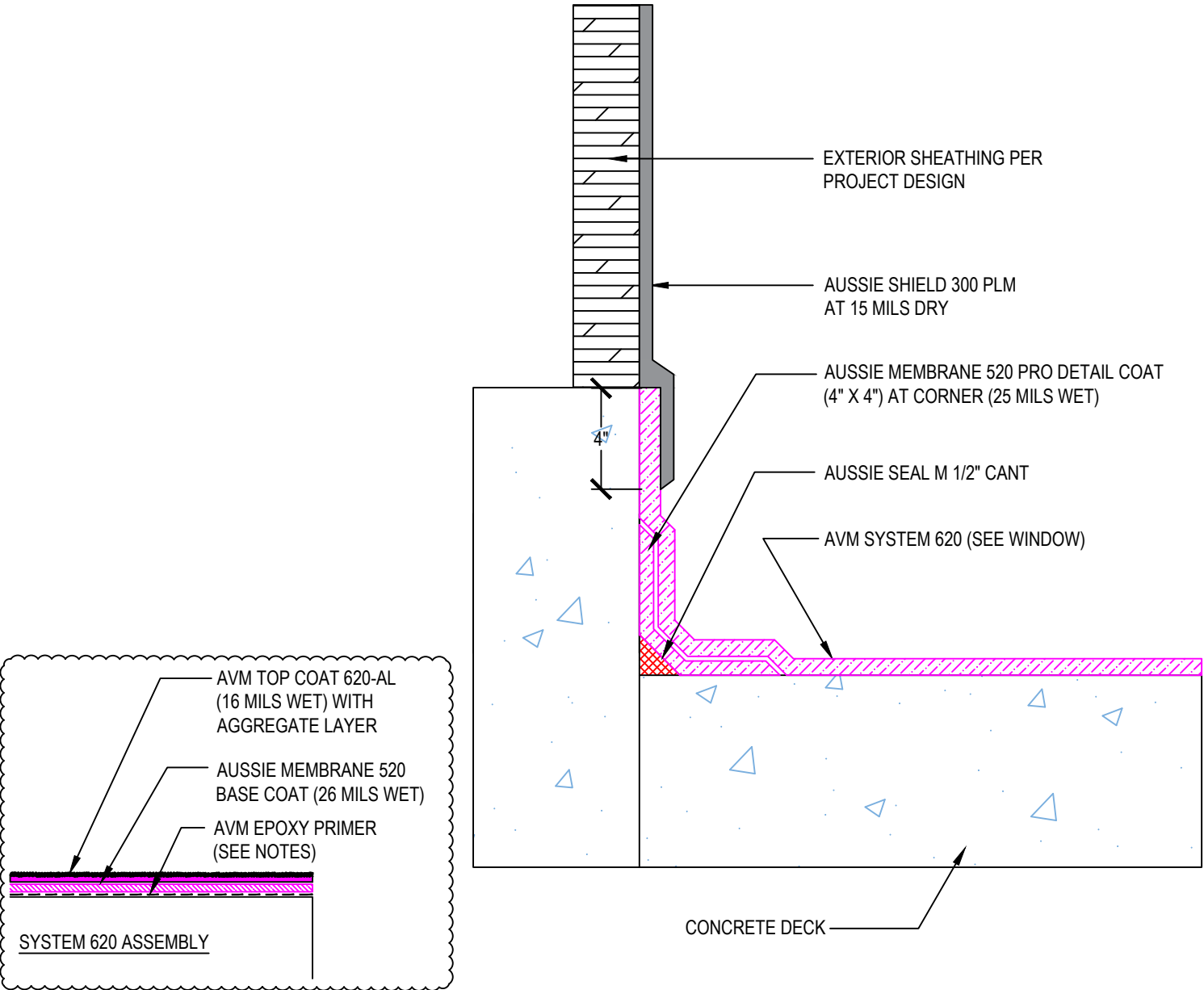
Notes:
 1. Epoxy primer may be required to achieve proper adhesion depending on the substrate

DETAIL #:
0300-PLM-1127
 System 300 PLM

Transition to AVM 620 Deck Coating



AVM SYSTEM 620 - Pedestrian Deck Coating

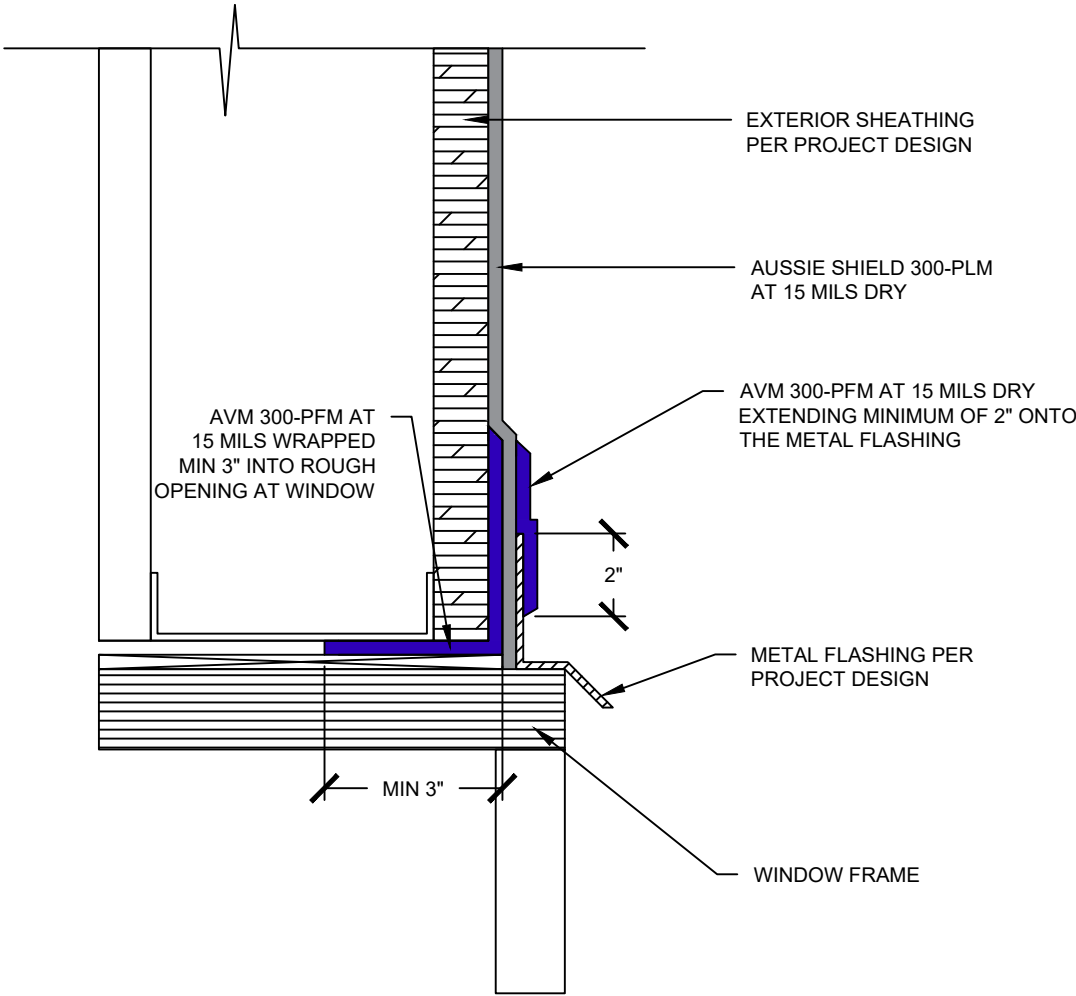


- Notes:**
1. Epoxy primer may be required to achieve proper adhesion depending on the substrate

DETAIL #:
0300-PLM-1130
Aussie Shield 300-PLM

Window Head Detail

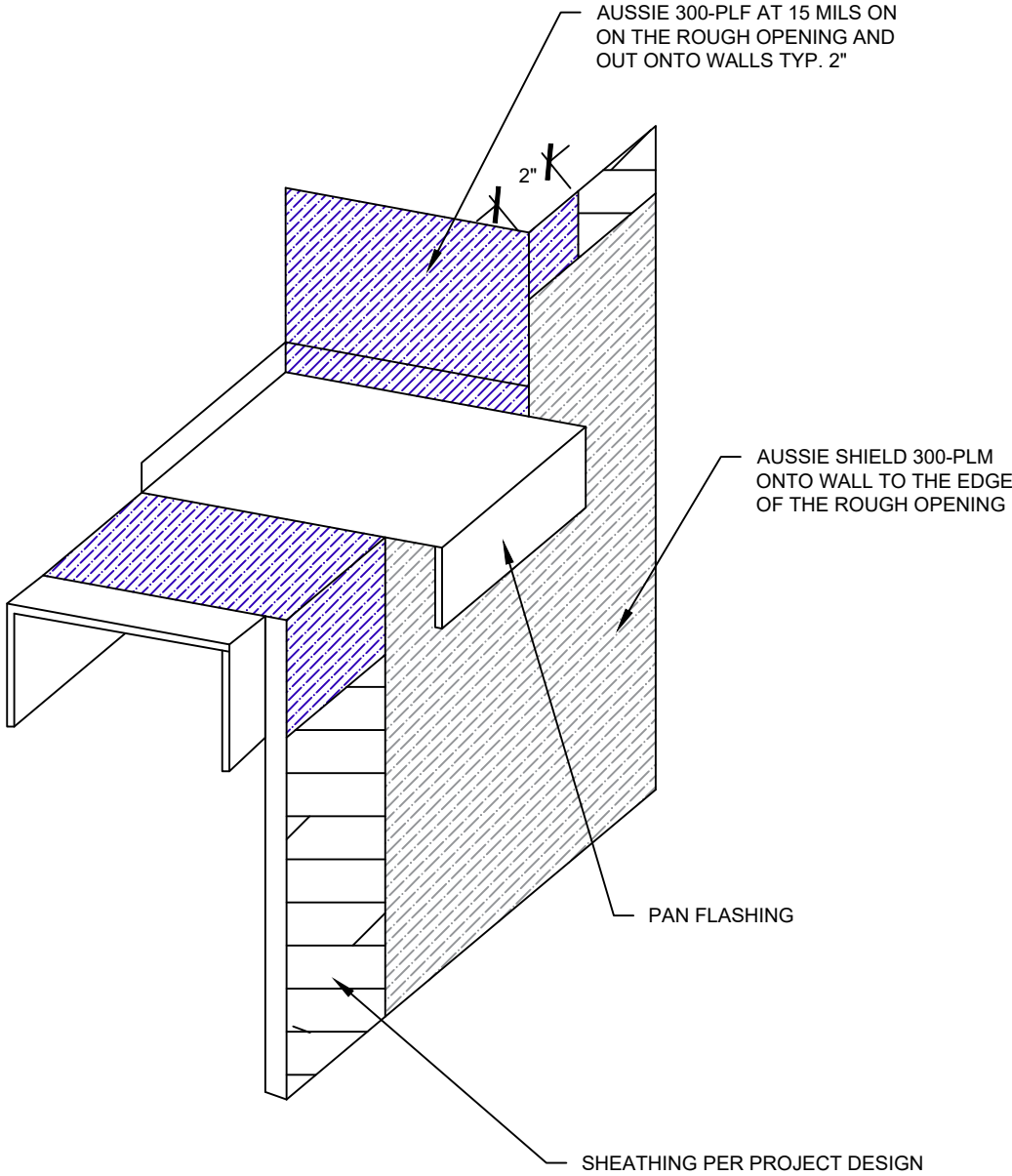
Aussie Shield 300-PLM



DETAIL #:
0300-PLM-1135.1
Aussie Shield 300-PLM

Pan Flashing Pre-Treatment of Rough Opening

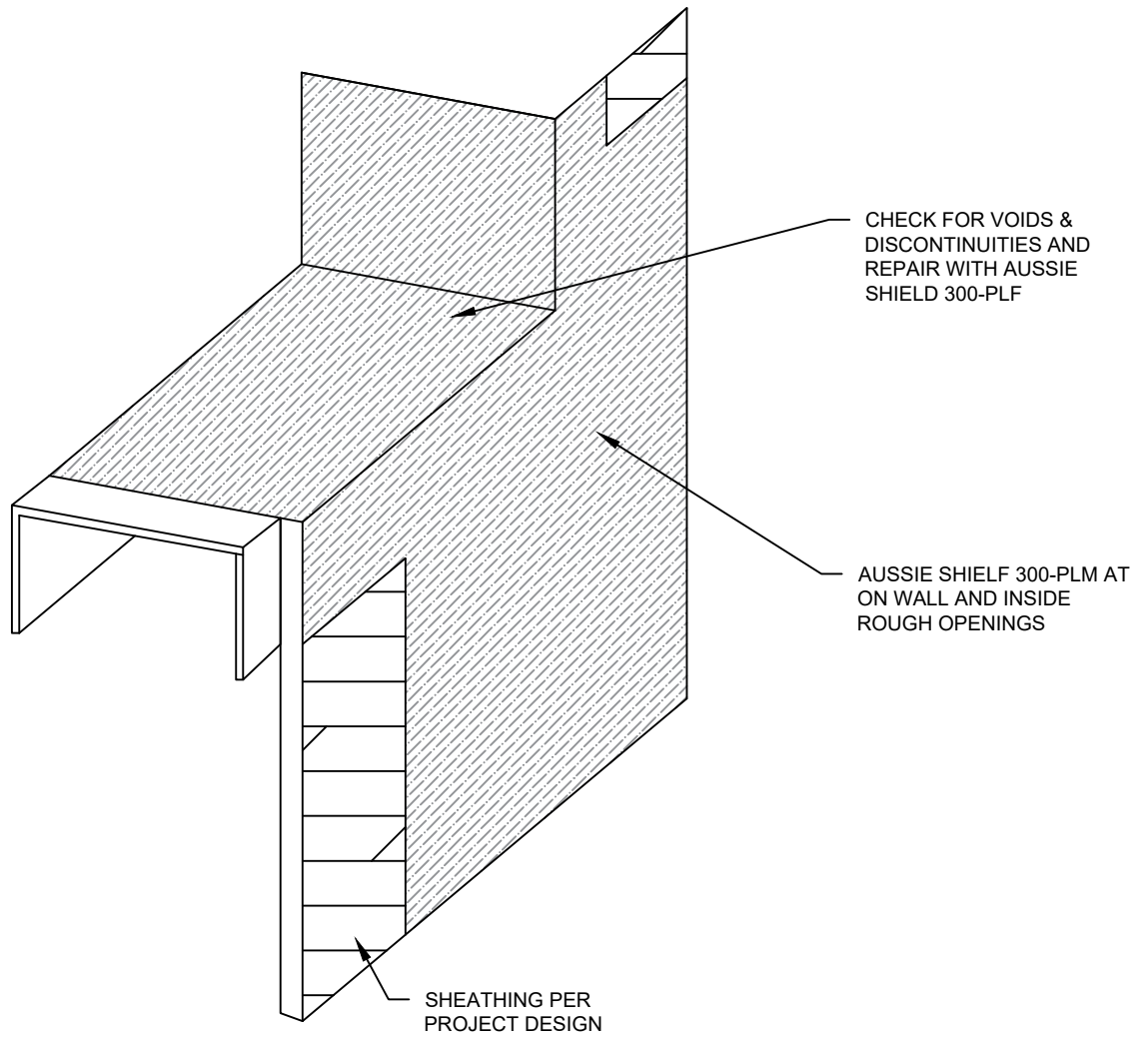
Aussie Shield™ 300-PLM/PLF



DETAIL #:
0300-PLM-1135.2
Aussie Shield 300-PLM

Pan Flashing Post Treatment

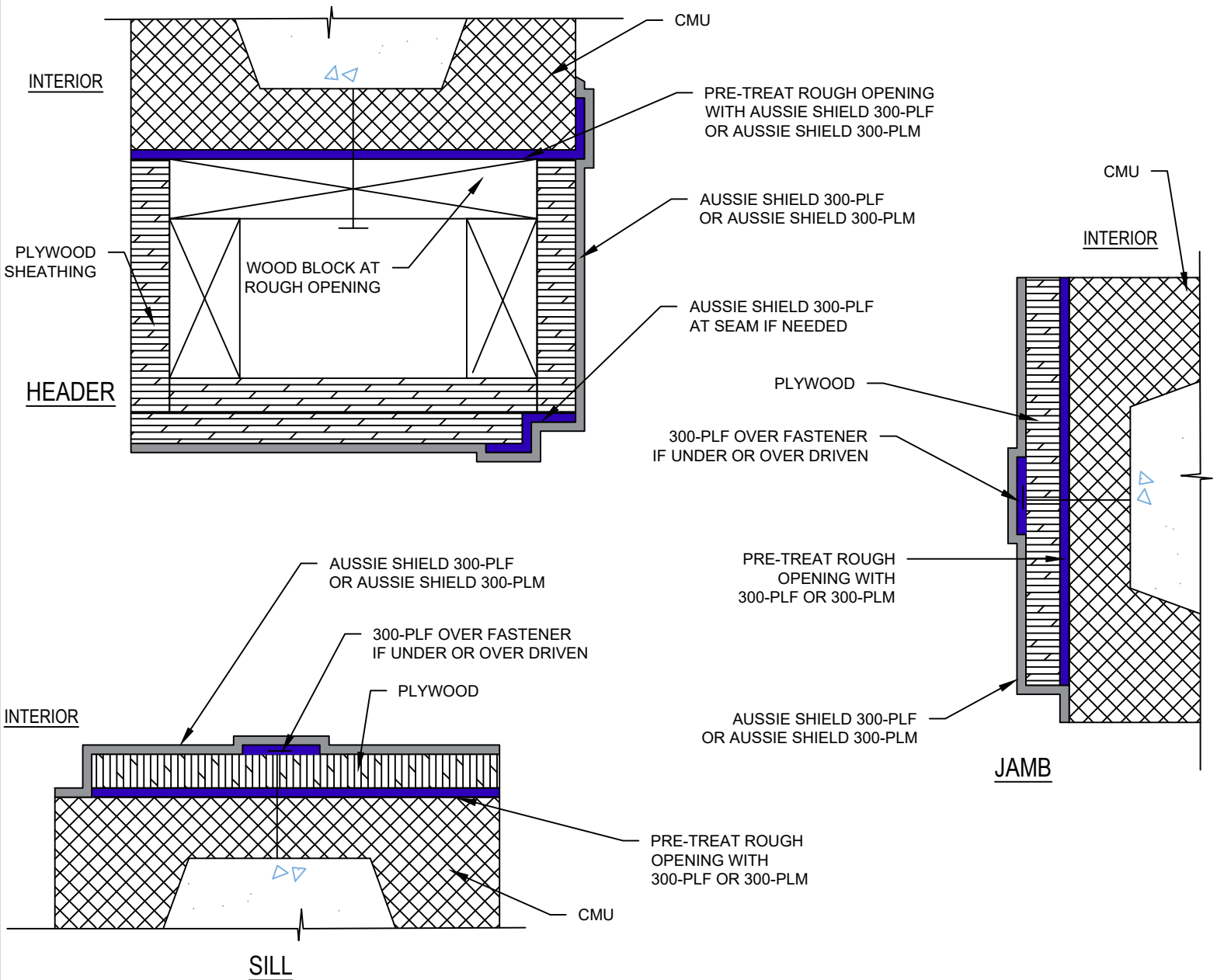
Aussie Shield™ 300-PLM



DETAIL #:
 0300-PLM-1400
 System:
 System 300 PLM

CMU or Concrete Arched Window Rough Opening

Aussie Shield 300-PLM

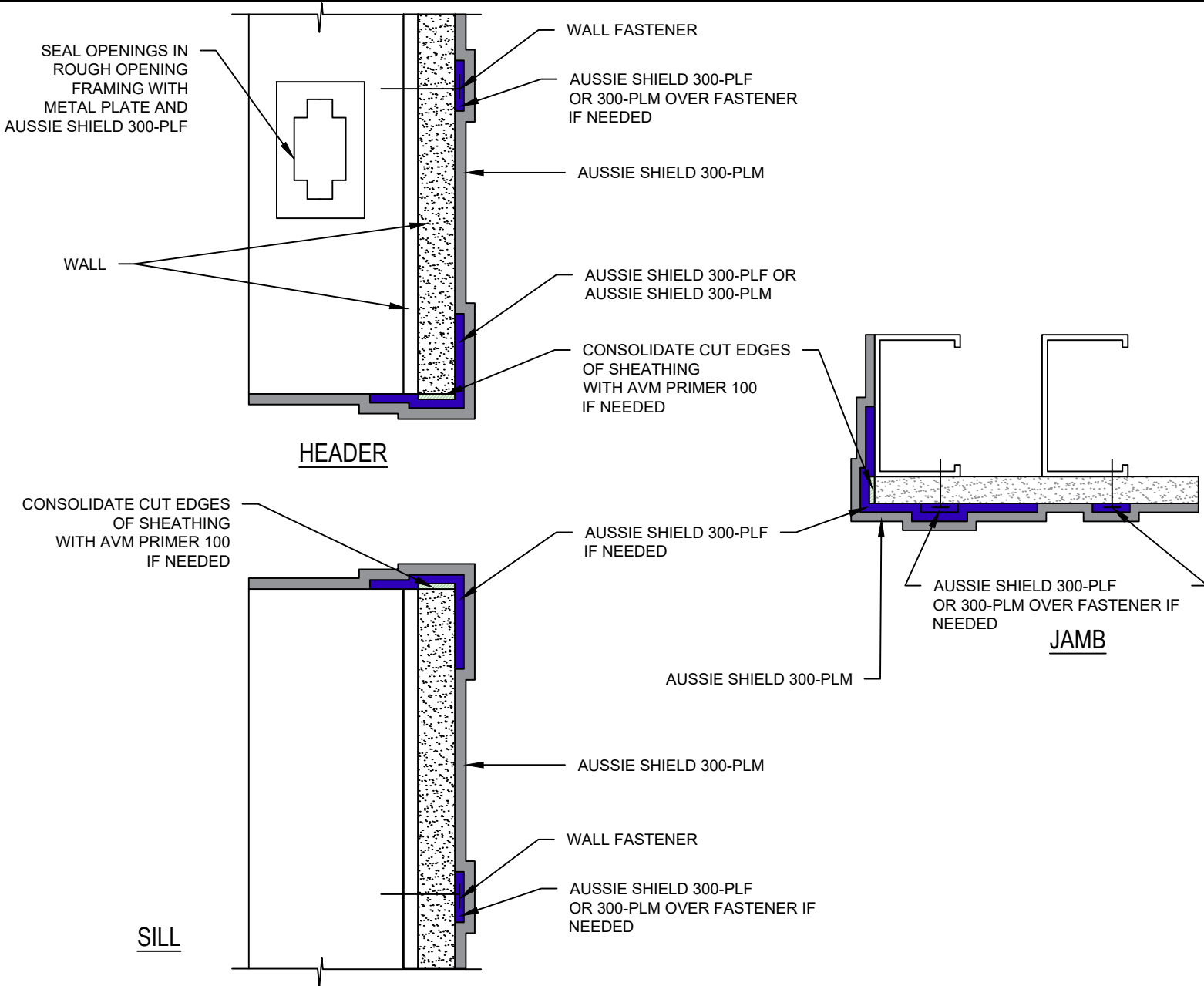


DETAIL #:
 0300-PLM-1401
 System:
 System 300 PLM

Rough Opening on Sheathing Wall

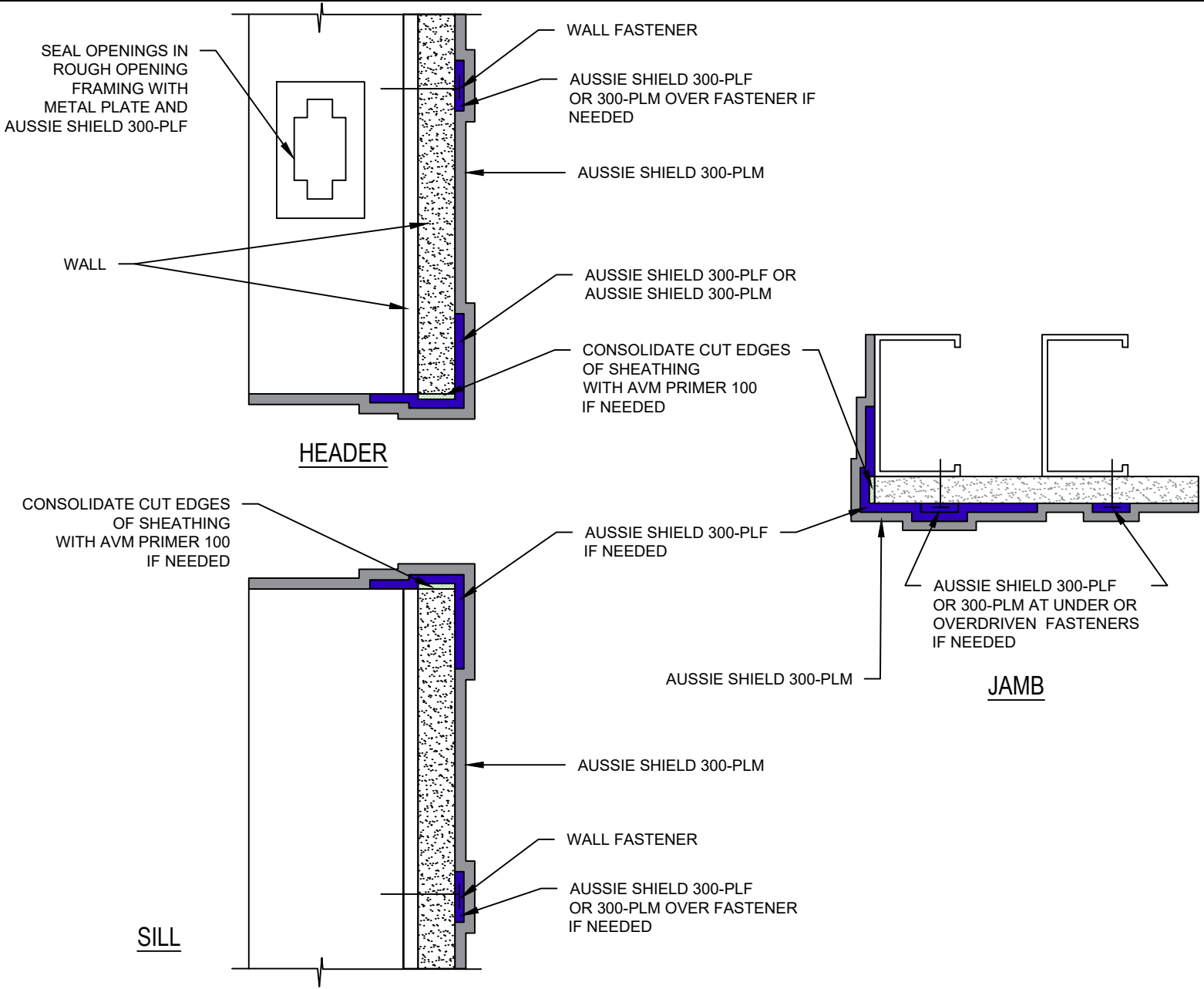


Aussie Shield 300-PLM



DETAIL #:
 0300-PLM-1402
 System:
 System 300 PLM

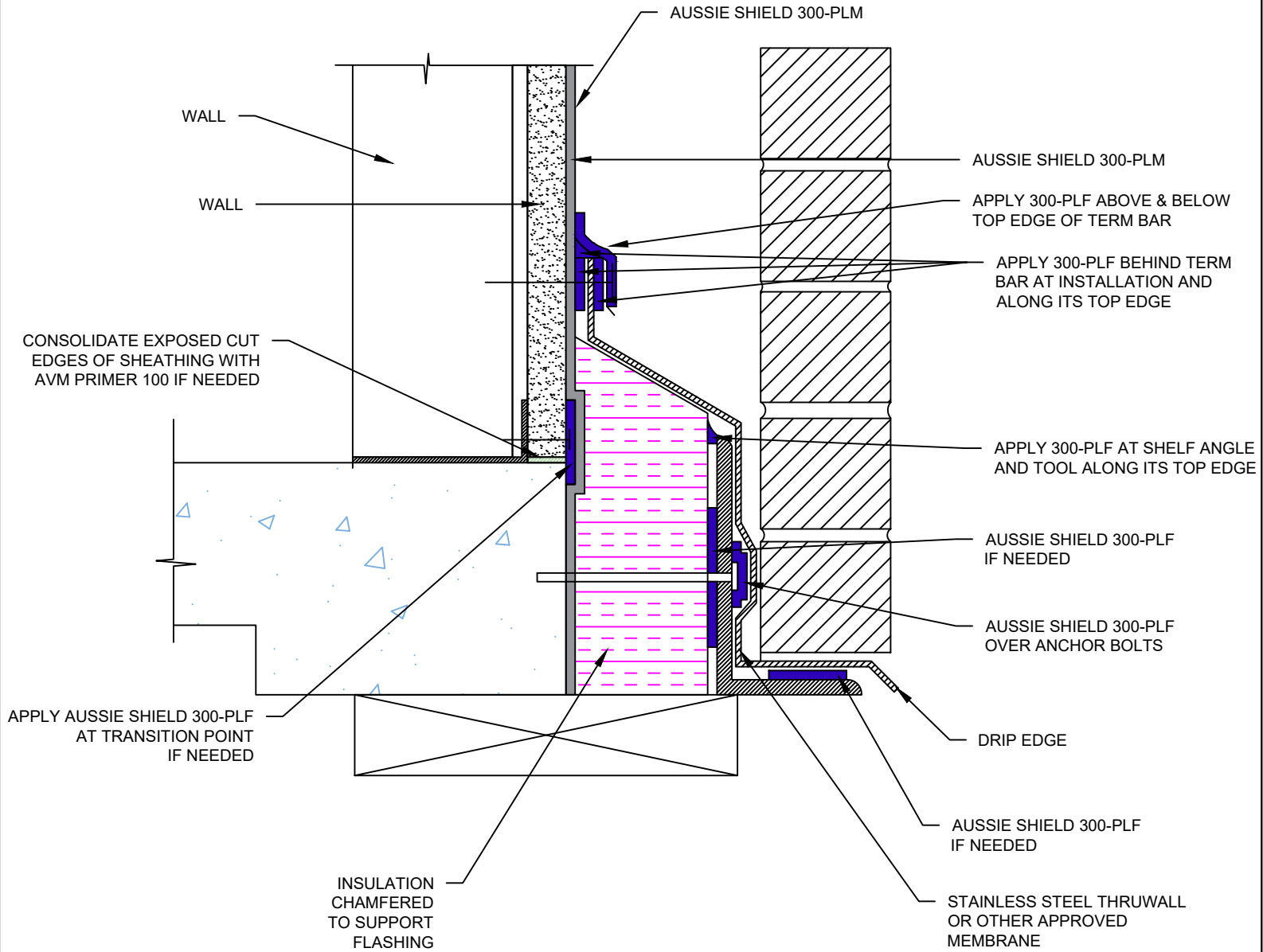
Rough Opening with 300-PLF or
 300-PLM Building Wrap
 Aussie Shield 300-PLM



DETAIL #:
0300-PLM-1403
 System:
Aussie Shield 300-PLM

Window Head Detail Through Wall Flashing & Term Bar

Aussie Shield 300-PLM



DETAIL #:
0300-PLM-1404
 System:
Aussie Shield 300-PLM

Window Head Flashing

Aussie Shield 300-PLM

